

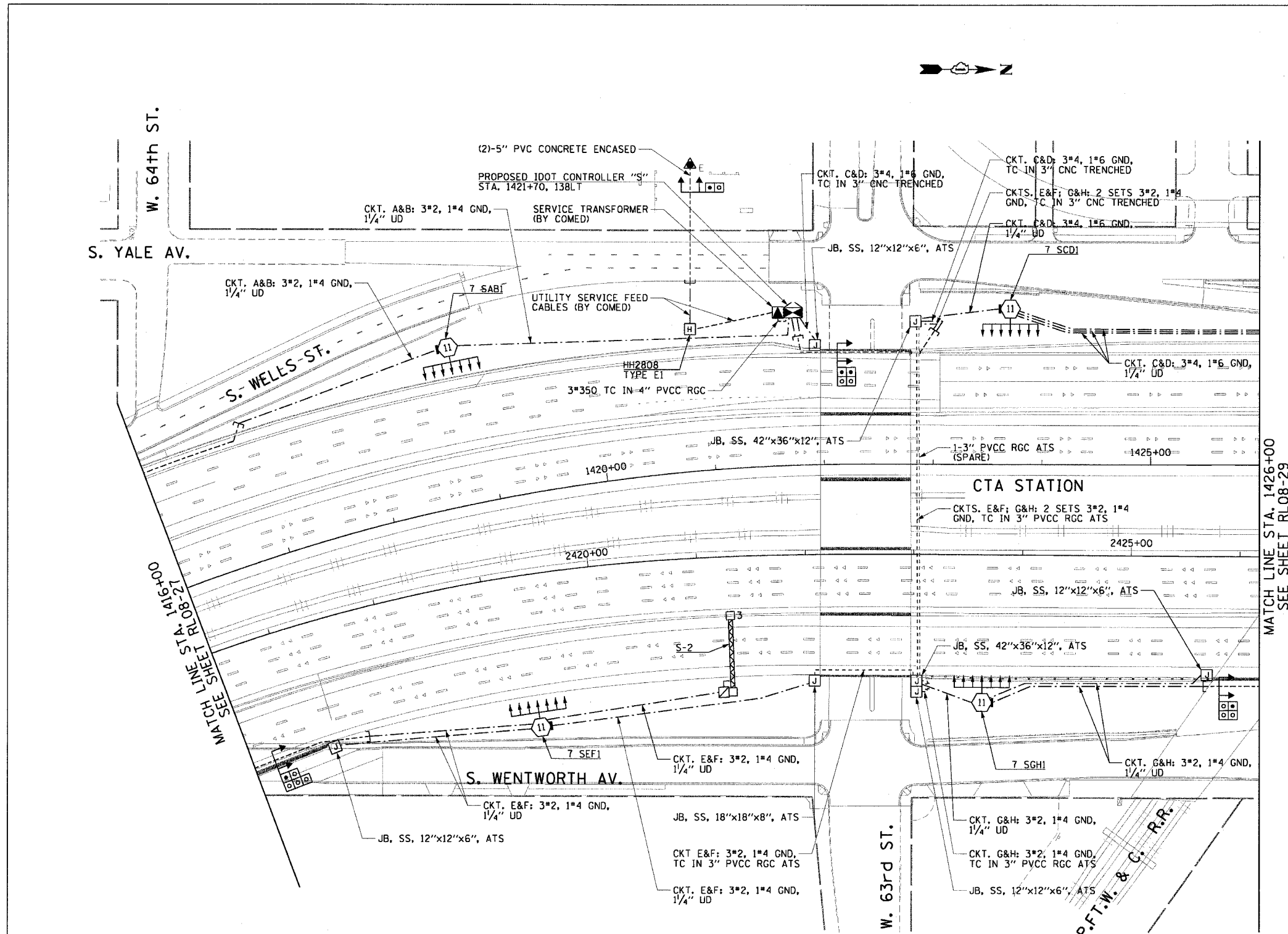
F.A.I. RTE.	SECTION	COUNTY	TOTAL SHEETS	SHEET NO.
90/94	2003-0311	COOK	976	284
STA. 1416+00.00		TO STA. 1426+00.00		
FED. ROAD DIST. NO. 1 ILLINOIS FED. AID PROJECT				

62583

NOTES:

1. SEE DRAWINGS ME-01 AND ME-02 FOR ELECTRICAL SYMBOLS AND ABBREVIATIONS.
2. SEE DRAWING ES-04 FOR HIGH MAST LIGHT TOWER SCHEDULE.
3. SEE DRAWING UL-24 FOR WENTWORTH AV. UNDERPASS LIGHTING PLANS.
4. SEE DRAWING UL-25 FOR 63rd STREET UNDERPASS LIGHTING PLANS.
5. SEE DRAWING UL-26 FOR P. FT. W. & C. RAILROAD UNDERPASS LIGHTING PLANS.

m:\p\40468\elect\16\cmt\20\slr\contract\2\2008\Final\10202829_08.dwg



MATCH LINE STA. 1426+00
SEE SHEET RL08-29



RL08-28



REVISIONS	
NAME	DATE

ILLINOIS DEPARTMENT OF TRANSPORTATION
F.A.I. 90/94 (DAN RYAN EXPRESSWAY)
31st STREET TO I-57

**ROADWAY LIGHTING PLANS
FINAL CONDITIONS**

SCALE: 1"=50'
DATE: October 29, 2004

DRAWN BY: CJM
CHECKED BY: WDS

11/19/2004 01:04:58 PM