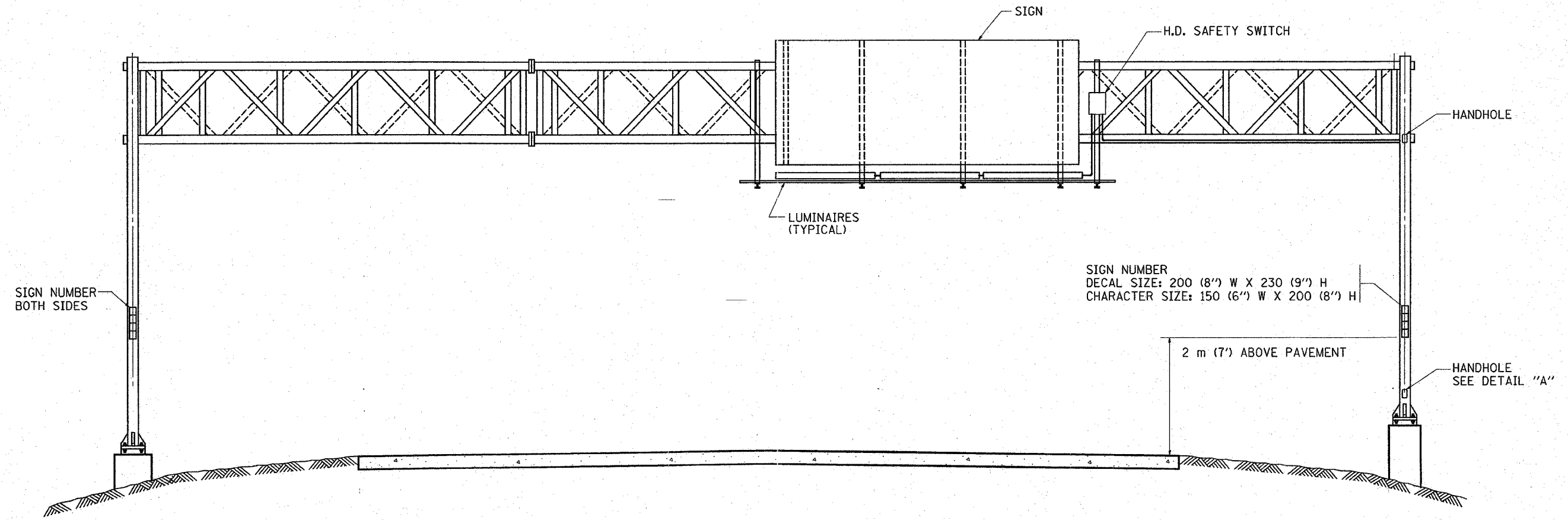
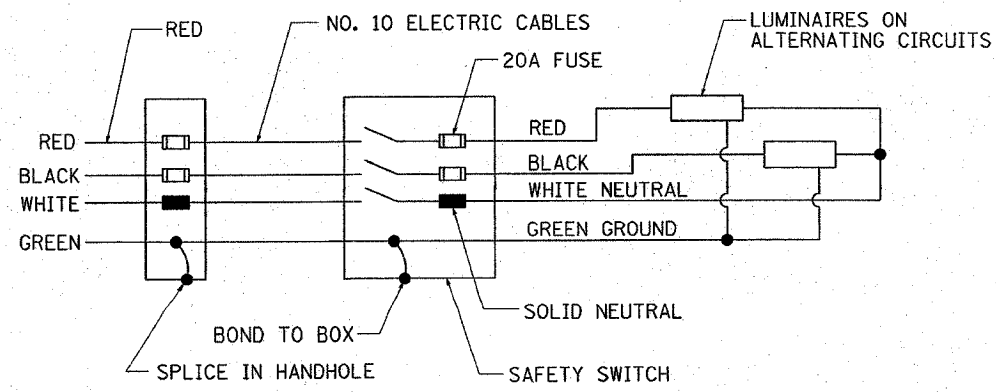


CONTRACT NO.:				
F.A. RYE.	SECTION	COUNTY	TOTAL SHEETS	SHEET NO.
9/9/04	2003-0812	COOK	976	405
STA.		TO STA.		
FED. ROAD DIST. NO.	ILLINOIS FED. AID PROJECT			
CONTRACT NO. 62583				

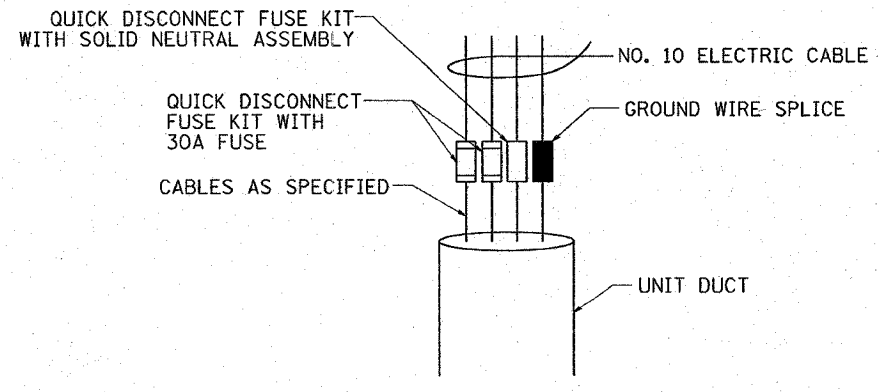


SIGN NUMBER
 DECAL SIZE: 200 (8") W X 230 (9") H
 CHARACTER SIZE: 150 (6") W X 200 (8") H

2 m (7') ABOVE PAVEMENT



WIRING DIAGRAM



DETAIL A

NOTES:

1. ALL DIMENSIONS ARE IN MILLIMETERS (INCHES) UNLESS OTHERWISE SHOWN
2. ALL CONDUIT ATTACHED TO STRUCTURE SHALL BE GALVANIZED RIGID METALIC CONDUIT, PVC COATED (GRMC, PVC)
3. THE USE OF LIQUID TIGHT METAL CONDUIT (TYPE LFMC) SHALL BE LIMITED TO LOCATIONS WHERE MOVEMENT IS ANTICIPATED AND SHALL NOT EXCEED 1.5M (5') IN LENGTH
4. ALL WORK INDICATED SHALL BE INCLUDED IN THE PAY ITEM FOR ELECTRIC CONNECTION TO SIGN STRUCTURE

REVISIONS	
NAME	DATE

ILLINOIS DEPARTMENT OF TRANSPORTATION
 ELECTRIC CONNECTION
 TO SIGN STRUCTURE
 SPAN TYPE
 1 OF 2
 SCALE: VERT. DATE
 HORIZ. DRAWN BY CHECKED BY

06:52:01 04/07/2004