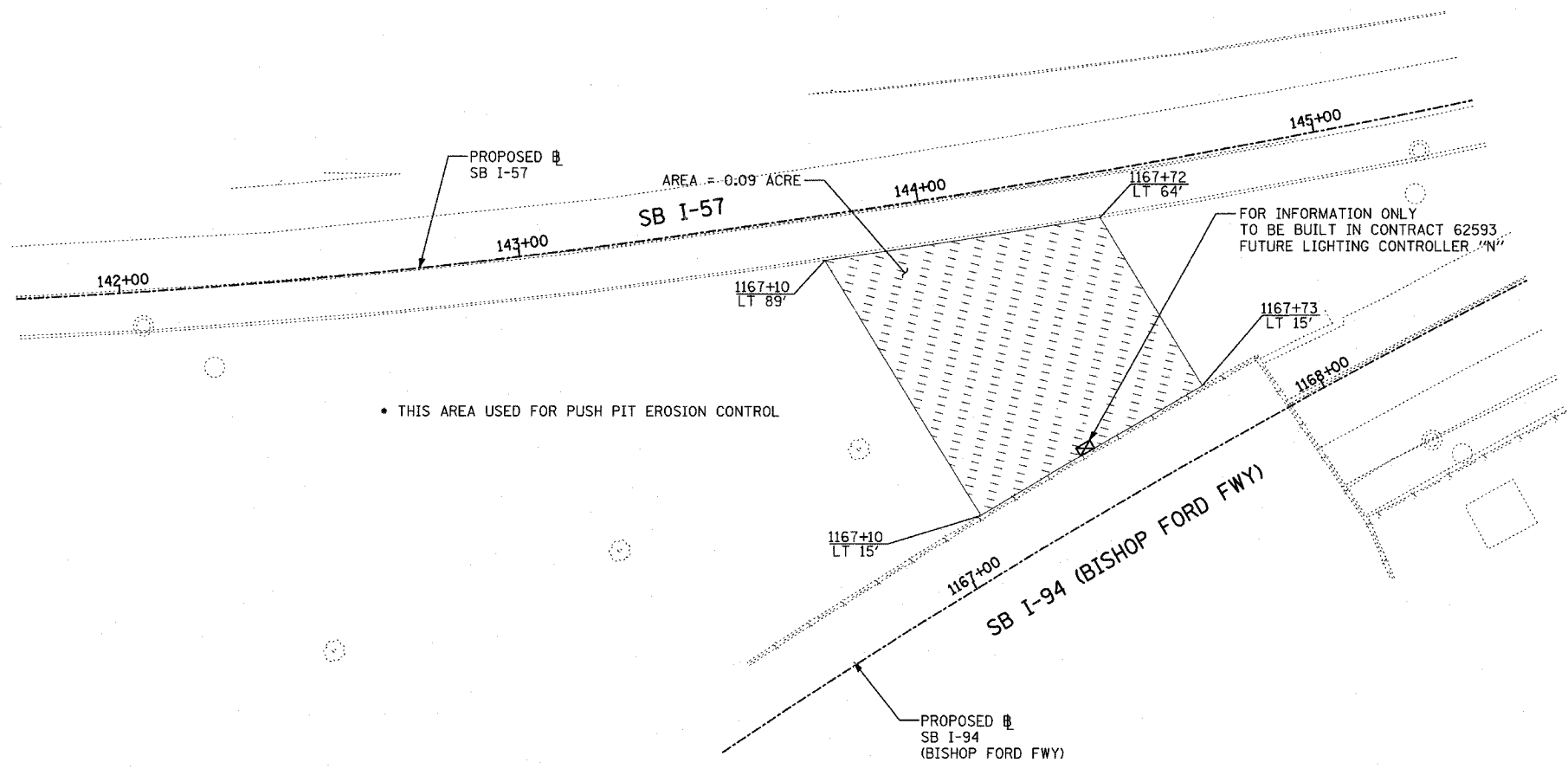
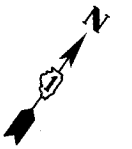


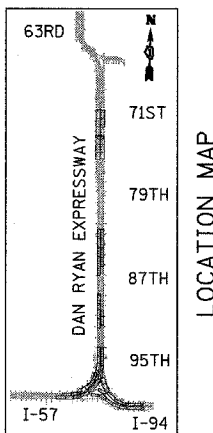
F.A.I. RTE.	SECTION	COUNTY	TOTAL SHEETS	SHEET NO.
90/94	2003-0311	COOK	976	429
STA.	TO STA.			
FED. ROAD DIST. NO.	ILLINOIS FED. AID PROJECT			

62583

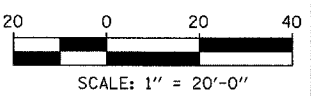


• THIS AREA USED FOR PUSH PIT EROSION CONTROL

FOR INFORMATION ONLY  
TO BE BUILT IN CONTRACT 62593  
FUTURE LIGHTING CONTROLLER "N"



LOCATION MAP



- LEGEND:**
- TEMPORARY EROSION CONTROL SEEDING
  - PERIMETER EROSION BARRIER
  - INLET FILTER, TO BE INSTALLED IN OFF PROJECT DRAINAGE STRUCTURES ACCEPTING STORMWATER RUNOFF
  - TEMPORARY FENCE (60' PER TREE)
  - LIMITS OF GRADING
  - TREE REMOVAL (UNIT) (NO UNIT SHOWN = <6)

REVISIONS	
NAME	DATE

ILLINOIS DEPARTMENT OF TRANSPORTATION  
F.A.I. 90/94 (DAN RYAN EXPRESSWAY)  
31st STREET to I-57  
EROSION CONTROL PLAN  
SB I-57 AND SB I-94 (BISHOP FORD FWY)  
SB I-57 STA. 141+74.35 TO 145+40.06

SCALE: 1"=20'  
DATE: OCTOBER 29, 2004

DRAWN BY: RTM, JPA  
CHECKED BY: JPM, MAG

11/23/2004 02:35:33 PM