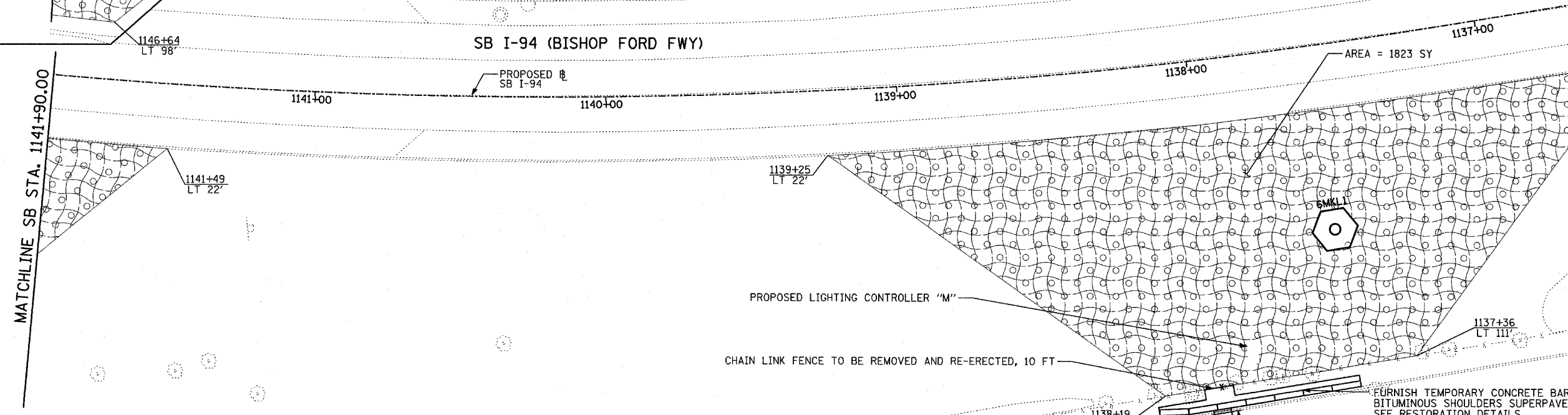
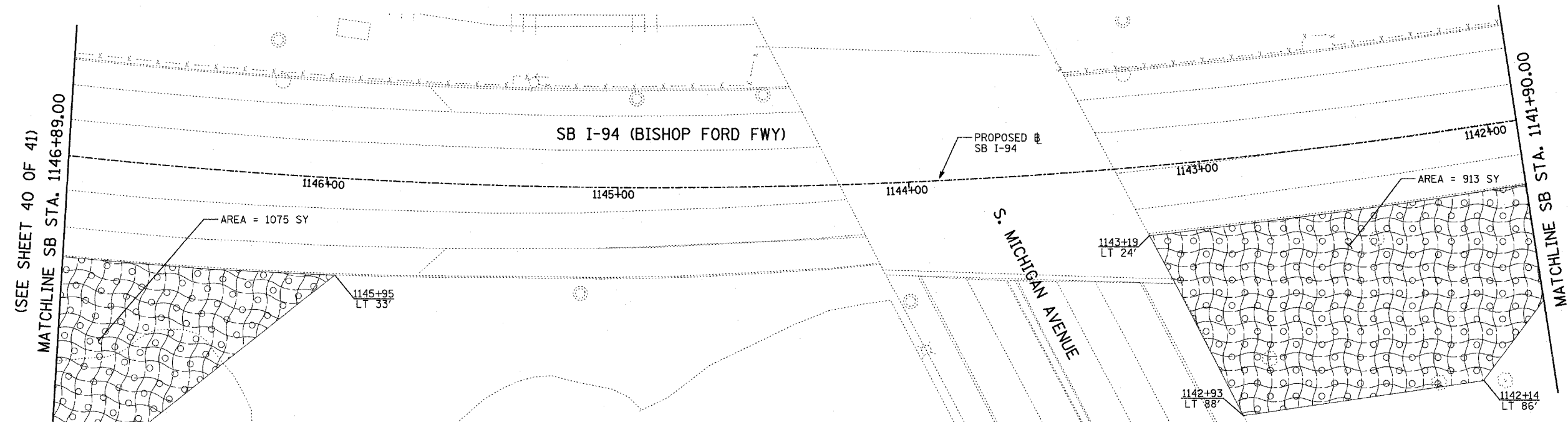
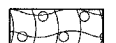
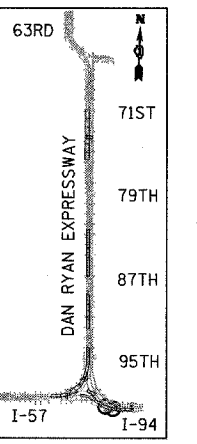
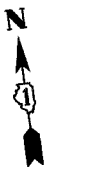


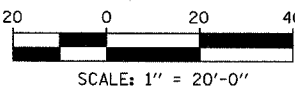
F.A.I. RTE.	SECTION	COUNTY	TOTAL SHEETS	SHEET NO.
90/94	2003-0311	COOK	976	492
STA.	TO STA.			
FED. ROAD DIST. NO.	ILLINOIS	FED. AID PROJECT	62583	



**LEGEND:**  
 EROSION CONTROL BLANKET, SEEDING, CLASS 2A, NITROGEN, PHOSPHORUS, AND POTASSIUM FERTILIZER NUTRIENTS, TOPSOIL FURNISH AND PLACE, 4"



LOCATION MAP



MATCHLINE SB STA. 1141+90.00

MATCHLINE SB STA. 1136+65.00  
(SEE SHEET 38 OF 41)

MATCHLINE SB STA. 1146+89.00  
(SEE SHEET 40 OF 41)

TYLIN INTERNATIONAL

E. 100th STREET

- 6" COMB. C&G REMOVAL
- 1 S.Y. SUB BASE GRANULAR MATERIAL, TYPE B 6"
- 6" COMB. CONC. C&G, TYPE B-V.12
- 2 S.Y., PROTECTIVE COAT
- 18' COMB. C&G REMOVAL
- 3 S.Y. SUB BASE GRANULAR MATERIAL, TYPE B 6"
- 18' COMB. CONC. C&G, TYPE B-V.12
- 4 S.Y., PROTECTIVE COAT

- SIDEWALK REMOVAL, 23 S.F.
- P.C.C. SIDEWALK 5', 23 S.F.
- PROTECTIVE COAT, 3 S.Y.
- (SIDEWALK SHALL BE REPAIRED TO NEAREST JOINT)
- (SIDEWALK RAMP TYPE A PER HWY. STD. 424001)

- FURNISH TEMPORARY CONCRETE BARRIER, 70 FT BITUMINOUS SHOULDERS SUPERPAVE, 6", 35 SY SEE RESTORATION DETAILS
- PAVEMENT REMOVAL, 30 S.Y.
- SUB BASE GRANULAR MATERIAL, TYPE B 6", 30 S.Y.
- P.C.C. BASE COURSE, 10.5", 30 S.Y.

- LIMIT OF BITUMINOUS SURFACE REMOVAL, 1 1/2", 35 S.Y.
- LIMIT OF BIT. CONC. SURFACE COURSE, 1 1/2" SUPERPAVE MIX "D" N70, 3 TONS BIT. MATERIALS (PRIME COAT), 0.04 TONS AGGREGATE (PRIME COAT), 0.10 TONS

- PAVEMENT REMOVAL, 27 S.Y.
- SUB BASE GRANULAR MATERIAL, TYPE B 6", 27 S.Y.
- P.C.C. BASE COURSE, 8", 27 S.Y.
- PROTECTIVE COAT, 27 S.Y.

REVISIONS	
NAME	DATE

ILLINOIS DEPARTMENT OF TRANSPORTATION  
 F.A.I. 90/94 (DAN RYAN EXPRESSWAY)  
 31st STREET TO I-57  
 RESTORATION PLAN  
 SB I-94 (BISHOP FORD FWY)  
 SB I-94 STA. 1146+89.00 TO 1136+65.00