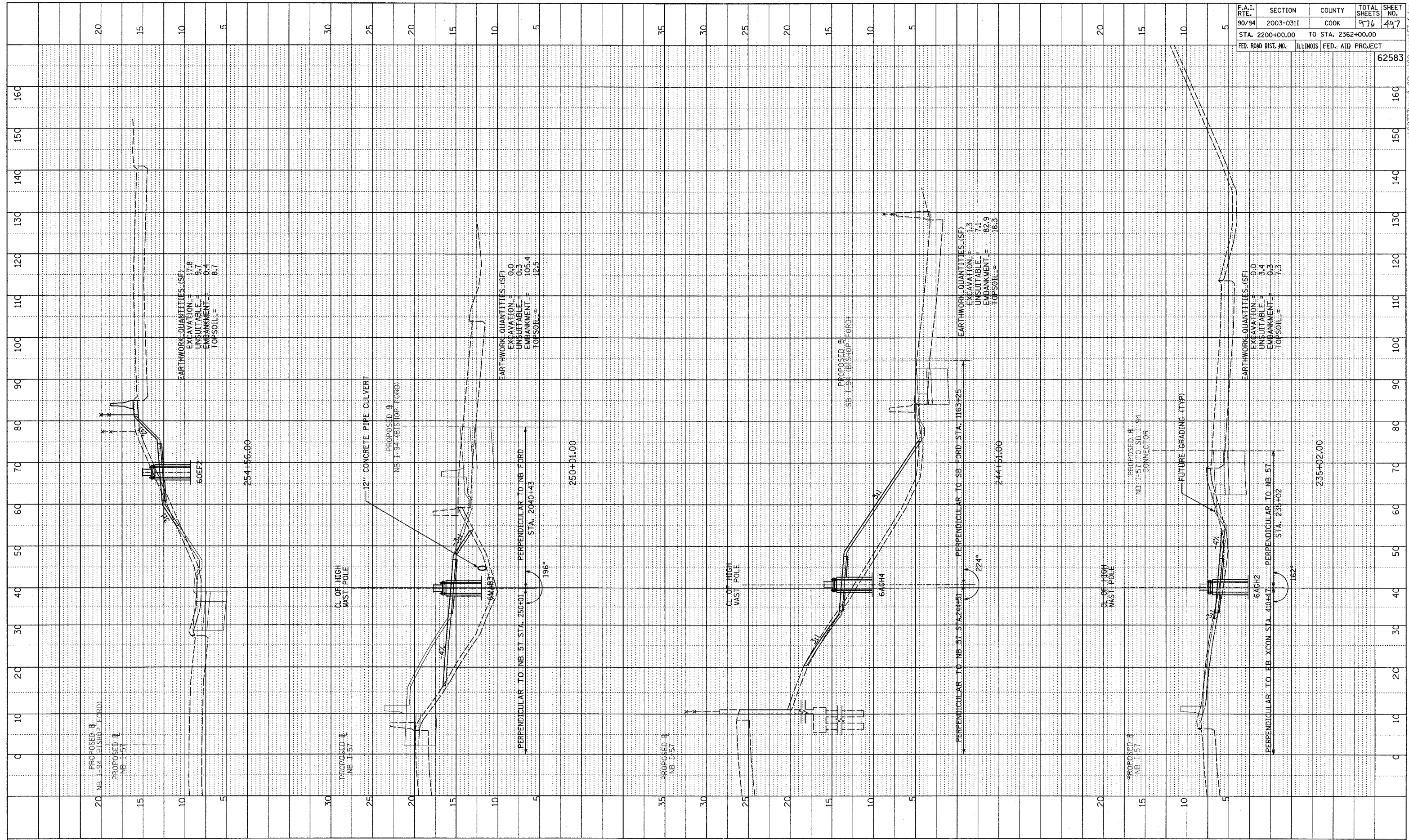
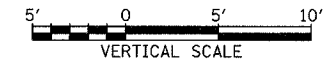


PROFILE SURVEYED  
 GRADES CHECKED  
 E.M. NOTED  
 STRUCTURE NOTATIONS OK'D

F.A.I. RTE.	SECTION	COUNTY	TOTAL SHEETS	SHEET NO.
90/94	2003-031I	COOK	976	447
STA. 2200+00.00		TO STA. 2362+00.00		
FED. ROAD DIST. NO.	ILLINOIS	FED. AID PROJECT	62583	



TYLIN INTERNATIONAL



NB I-57  
 STA. 235+02 TO STA. 254+56

P:\0231\Road\02\gk\02\ss\mb51\_1.dgn