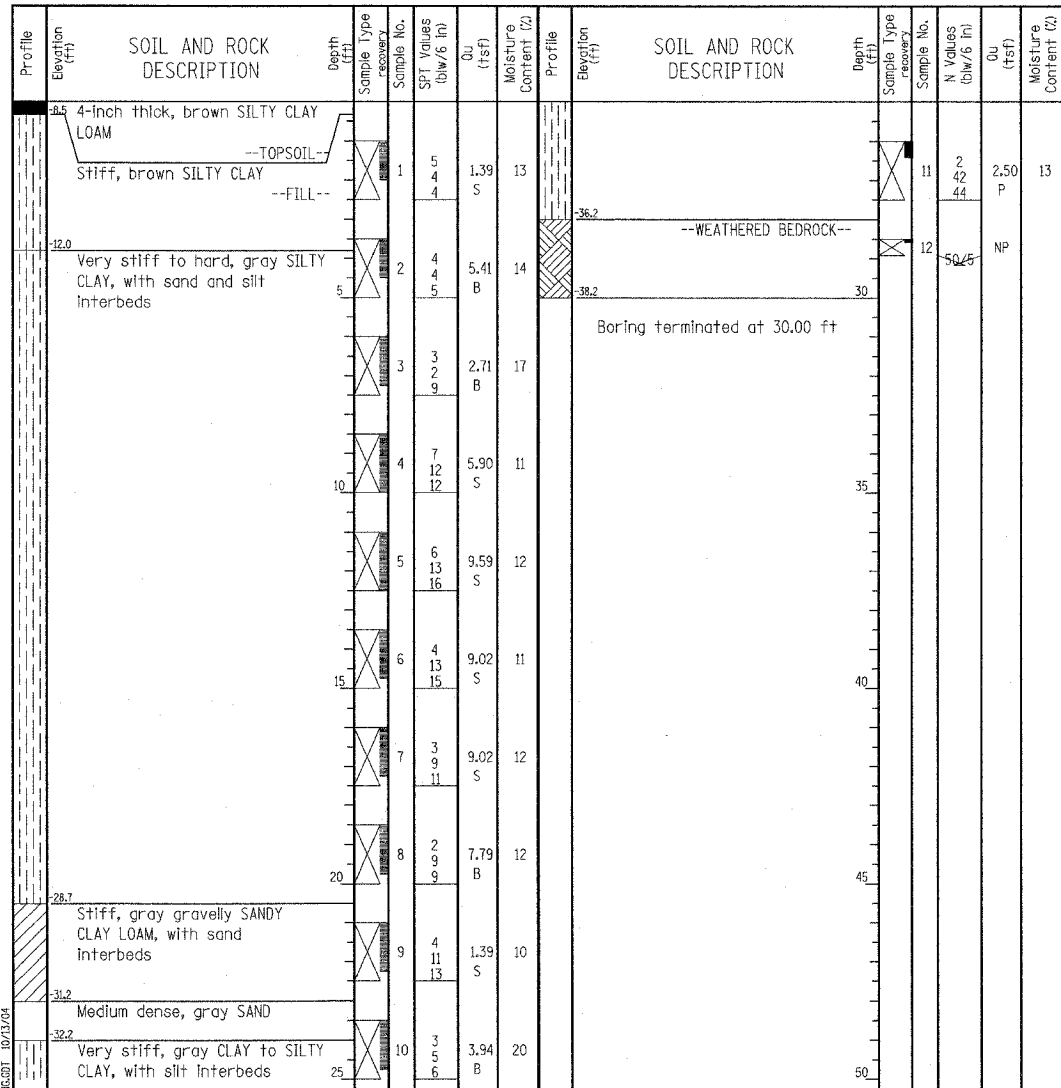


Wang Engineering, INC.
 Consulting Geotechnical and Environmental Engineers
 wangeng3@wangeng.com
 1145 Main Street
 Lombard, IL 60148
 Telephone: 630 953-9928
 Fax: 630 953-9938

BORING LOG 6AGH3
 WEI Job No.: 414-07-01
 Datum: CCD
 Elevation: -8.17 ft
 North: 1839930.78 ft
 East: 1177363.22 ft
 Station: 239+89
 Offset: 55' RT

Client: T. Y. LIN International
 Project: Dan Ryan Improvements; IDOT No. D-91-421-01
 Location: From 95th Street to South of 69th Street

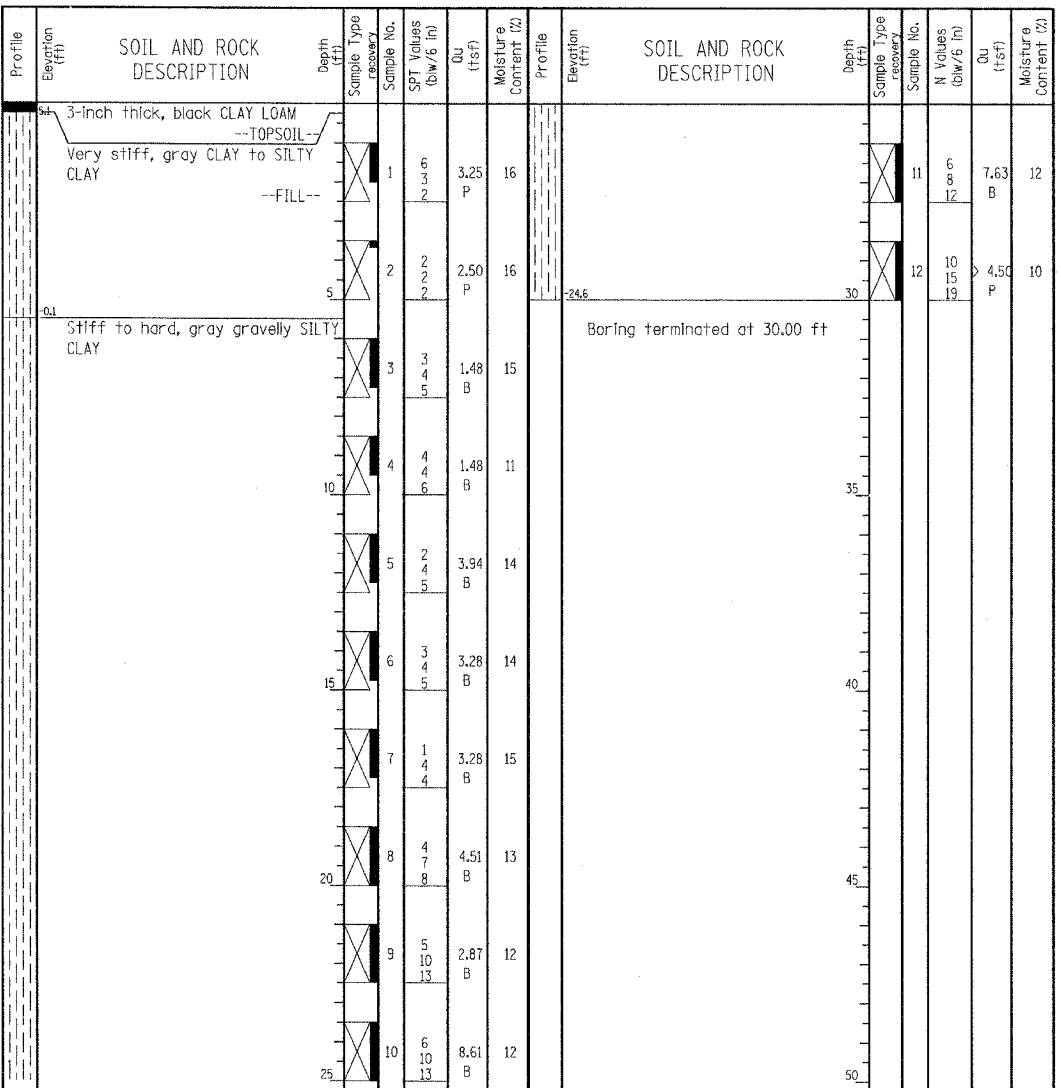


| GENERAL NOTES | | | | WATER LEVEL DATA | |
|---------------------|---|-------------------|------------|---------------------------|-------|
| Begin Drilling | 08-20-2004 | Complete Drilling | 08-20-2004 | While Drilling | ∇ DRY |
| Drilling Contractor | Patrick Drilling | Drill Rig | CME 75 TMR | At Completion of Drilling | ∇ DRY |
| Driller | J&L | Logger | J. Kasnick | Time After Drilling | NA |
| Drilling Method | 3.25" ID. HSA; Boring backfilled with bentonite upon completion | | | | |

Wang Engineering, INC.
 Consulting Geotechnical and Environmental Engineers
 wangeng3@wangeng.com
 1145 Main Street
 Lombard, IL 60148
 Telephone: 630 953-9928
 Fax: 630 953-9938

BORING LOG 5MMN5
 WEI Job No.: 414-07-01
 Datum: CCD
 Elevation: 5.38 ft
 North: 1839563.88 ft
 East: 1177468.46 ft
 Station: 420+54
 Offset: 65' LT

Client: T. Y. LIN International
 Project: Dan Ryan Improvements; IDOT No. D-91-421-01
 Location: From 95th Street to South of 69th Street



| GENERAL NOTES | | | | WATER LEVEL DATA | |
|---------------------|---|-------------------|------------|---------------------------|-------|
| Begin Drilling | 08-03-2004 | Complete Drilling | 08-03-2004 | While Drilling | ∇ DRY |
| Drilling Contractor | Patrick Drilling | Drill Rig | CME 75 TMR | At Completion of Drilling | ∇ DRY |
| Driller | J&L | Logger | Y. Shiu | Time After Drilling | NA |
| Drilling Method | 3.25" ID. HSA; Boring backfilled with bentonite upon completion | | | | |

LEGEND

| | |
|----|---------------------|
| NP | NON-PLASTIC |
| B | BULGE FAILURE |
| S | SHEAR FAILURE |
| P | POCKET PENETROMETER |

TYLIN INTERNATIONAL

| REVISIONS | |
|-----------|------|
| NAME | DATE |
| | |
| | |
| | |
| | |
| | |
| | |
| | |
| | |
| | |

ILLINOIS DEPARTMENT OF TRANSPORTATION
 F.A.I. 90/94 (DAN RYAN EXPRESSWAY)
 31st STREET to I-57
 BORING LOGS FOR HMLT'S
 6 AGH3 & 5 MMN5

S.N. DESIGNED BY: DJR
 SCALE: N.T.S. DRAWN BY: DJR
 DATE: OCTOBER 29, 2004 CHECKED BY: TD

10/15/2004 12:30:36 PM