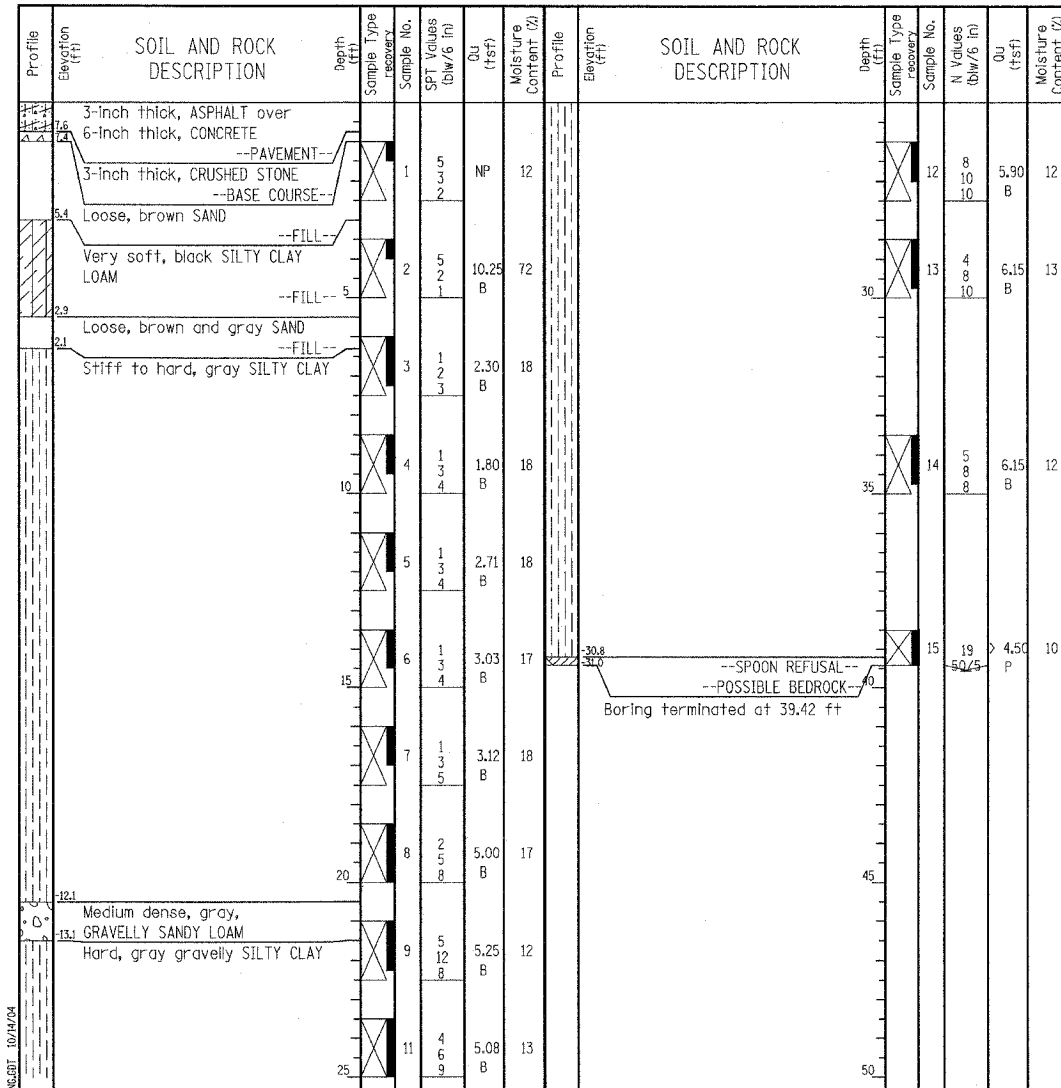
 Wang Engineering, Inc. Consulting Geotechnical and Environmental Engineers wangeng@wangeng.com 1145 Main Street Lombard, IL 60148 Telephone: 630 953-9928 Fax: 630 953-9938	BORING LOG 6RCH1	Page 1 of 1
	WEI Job No.: 414-07-01	Datum: CCD
	Client: T. Y. LIN International	Elevation: 8.38 ft
	Project: Dan Ryan Improvements; IDOT No. D-91-421-01	North: 1857715.34 ft
Location: From 95th Street to South of 69th Street	East: 1177476.70 ft	Station: 2363+54
		Offset: 148' RT



GENERAL NOTES				WATER LEVEL DATA			
Begin Drilling	08-23-2004	Complete Drilling	08-23-2004	While Drilling	▽	DRY	
Drilling Contractor	Patrick Drilling	Drill Rig	CME 75 TMR	At Completion of Drilling	▽	DRY	
Driller	J&L	Logger	J. Kasnick	Time After Drilling	NA		
Drilling Method	3.25" ID. HSA; Boring backfilled with bentonite upon completion			Depth to Water	▽	NA	
The stratification lines represent the approximate boundary between soil types. The actual transition may be gradual.							

LEGEND

NP	NON-PLASTIC
B	BULGE FAILURE
S	SHEAR FAILURE
P	POCKET PENETROMETER

TYLIN INTERNATIONAL

REVISIONS		ILLINOIS DEPARTMENT OF TRANSPORTATION F.A.I. 90/94 (DAN RYAN EXPRESSWAY) 31st STREET to I-57 BORING LOG FOR HMLT 6 RGH1 S.N. DESIGNED BY: DJR SCALE: N.T.S. DRAWN BY: DJR DATE: OCTOBER 29, 2004 CHECKED BY: TD
NAME	DATE	