

SECTION	COUNTY	TOTAL SHEETS	SHEET NO.
2003-0311	COOK	976	673
STA. 116+00.00 TO STA. 129+00/231+50		ILLINOIS FED. AID PROJECT	
FED. ROAD DIST. NO. 62583			

NOTES:

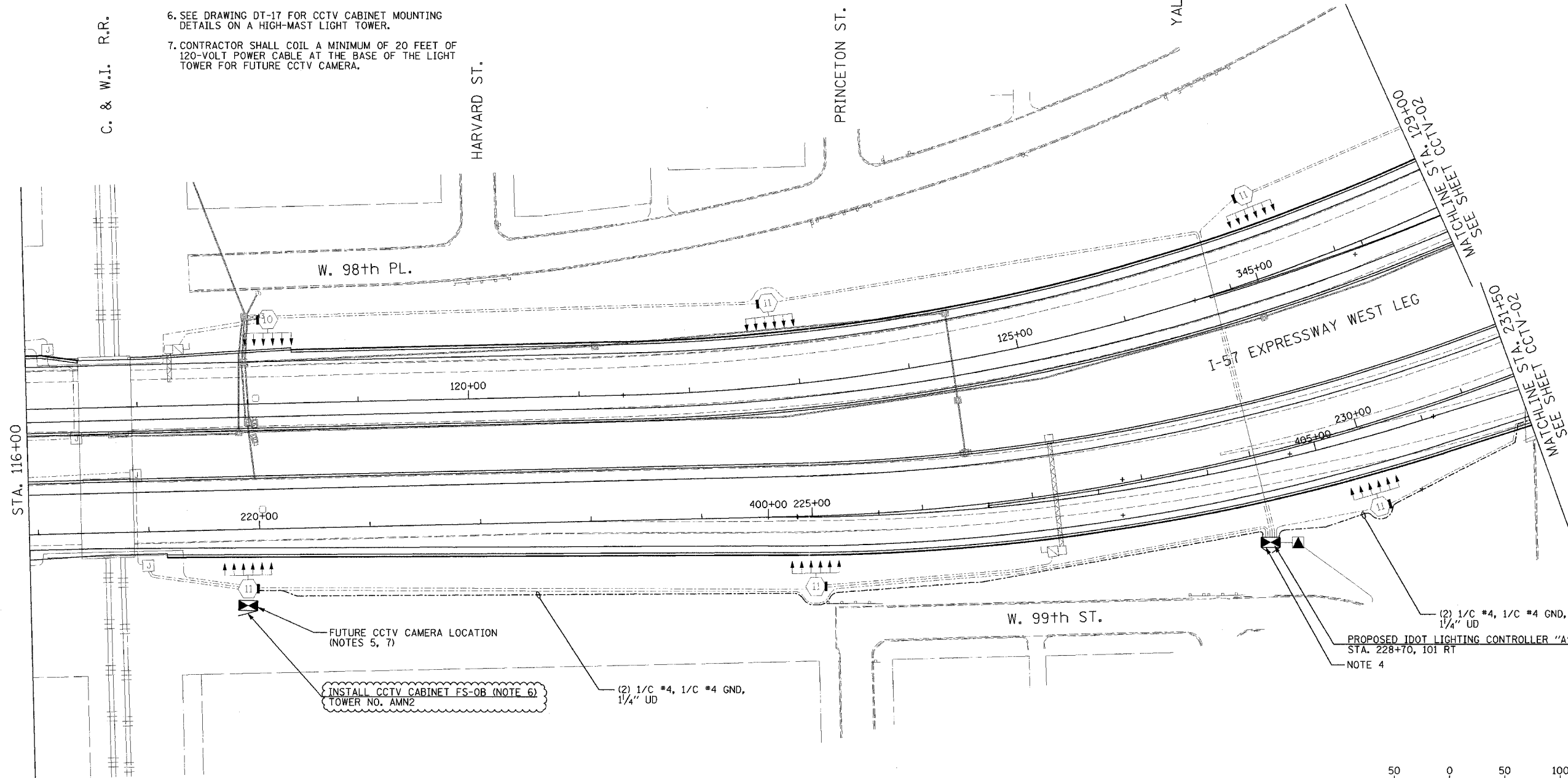
- SEE DRAWING ME-01 AND ME-02 FOR ELECTRICAL SYSTEMS AND ABBREVIATIONS.
- UNLESS OTHERWISE STATED, ALL NOTED CABLE AND CONDUIT TO BE FURNISHED AND INSTALLED UNDER THIS CONTRACT.
- THIS SHEET ONLY DEPICTS INSTALLATION OF CLOSED CIRCUIT TELEVISION ELEMENTS. SEE LIGHTING PLANS FOR LIGHTING ELEMENT INSTALLATION.
- CONTRACTOR SHALL CONNECT CAMERA POWER FEED TO THE AUXILIARY BREAKER IN THE LIGHTING CONTROLLER CABINET AS SHOWN ON DRAWING ME-19.
- SEE DRAWING COMM-03 FOR CCTV COMMUNICATIONS SYSTEM CONDUIT AND CABLE LAYOUT.
- SEE DRAWING DT-17 FOR CCTV CABINET MOUNTING DETAILS ON A HIGH-MAST LIGHT TOWER.
- CONTRACTOR SHALL COIL A MINIMUM OF 20 FEET OF 120-VOLT POWER CABLE AT THE BASE OF THE LIGHT TOWER FOR FUTURE CCTV CAMERA.

C. & W.I. R.R.

HARVARD ST.

PRINCETON ST.

YALE ST.



50 0 50 100
SCALE IN FEET

CCTV-01

REVISIONS	
NAME	DATE
REVISION 1	12/17/04

ILLINOIS DEPARTMENT OF TRANSPORTATION
F.A.I. 94/90 (DAN RYAN EXPRESSWAY)
31st STREET to I-57
CLOSED CIRCUIT TELEVISION
SITE LAYOUT
CAMERA CH-0A (SHEET 1 OF 2)
CAMERA CH-0B
SCALE: 1"=50'
DATE: October 29, 2004
DRAWN BY: DHI
CHECKED BY: MJL

**Edwards
AND Kelcey**
ONE NORTH FRANKLIN
CHICAGO, IL 60606
PHONE: (312) 251-3000
FAX: (312) 251-3015
WEB: WWW.EKCORP.COM

12/15/2004 04:21:38 PM