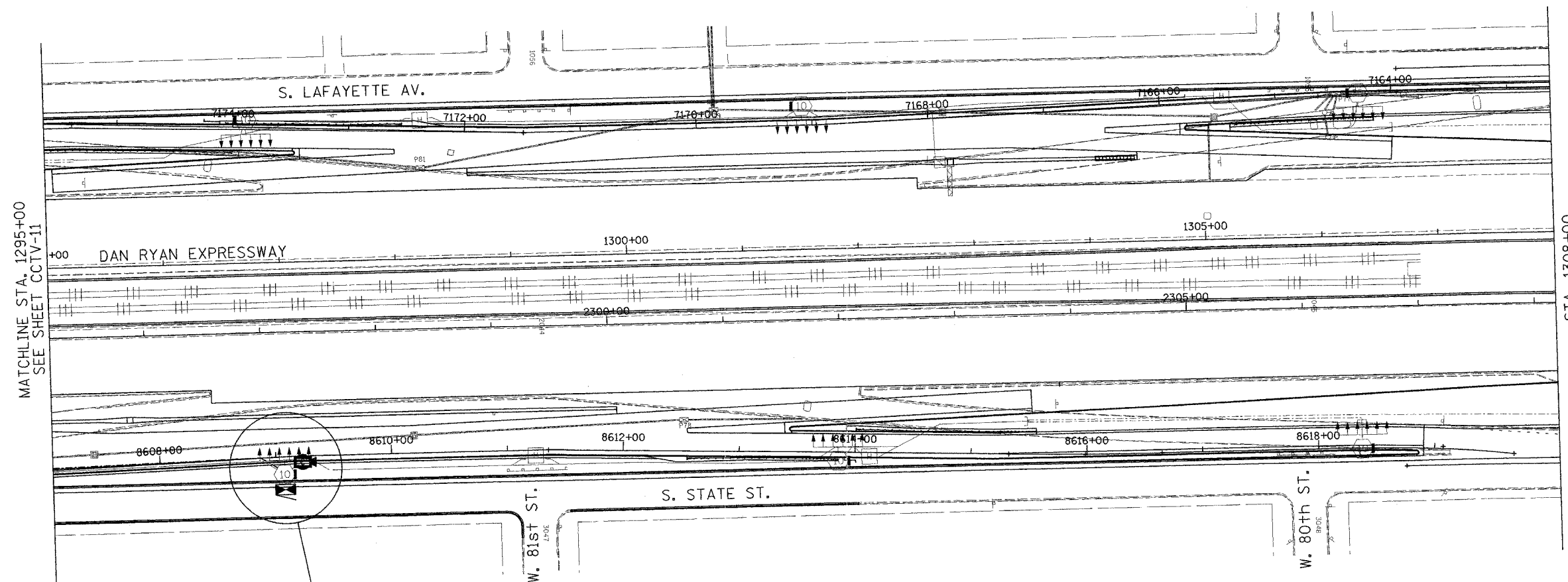
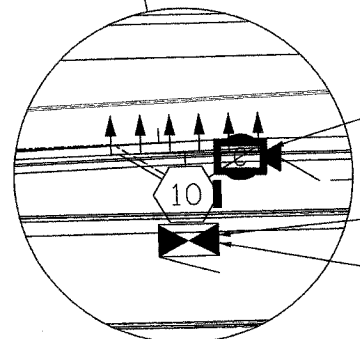


| | | | |
|---------------------|-----------------|------------------|-----------|
| SECTION | COUNTY | TOTAL SHEETS | SHEET NO. |
| 2003-0311 | COOK | 976 | 684 |
| STA. 1295+00 | TO STA. 1308+00 | | |
| FED. ROAD DIST. NO. | ILLINOIS | FED. AID PROJECT | |
| 62583 | | | |



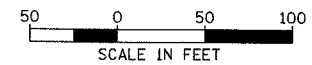
MATCHLINE STA. 1295+00
SEE SHEET CCTV-11

STA. 1308+00



- INSTALL AND CONNECT CCTV CAMERA SYSTEM ON HIGH-MAST LIGHT TOWER RING (NOTE 4, 5)
- INSTALL AND CONNECT CCTV CABINET EQUIPMENT IN CCTV CABINET DR-9A
- CCTV CABINET DR-9A (BY OTHERS) TOWER NO. POP3

- NOTES:**
1. SEE DRAWINGS ME-01 AND ME-02 FOR ELECTRICAL SYMBOLS AND ABBREVIATIONS.
 2. UNLESS OTHERWISE STATED, ALL NOTED CABLE AND CONDUIT TO BE FURNISHED AND INSTALLED UNDER THIS CONTRACT.
 3. THIS SHEET ONLY DEPICTS INSTALLATION OF CLOSED CIRCUIT TELEVISION ELEMENTS. SEE LIGHTING PLANS FOR LIGHTING ELEMENT INSTALLATION.
 4. SEE DRAWING DT-17 FOR CCTV CAMERA MOUNTING DETAILS ON A HIGH-MAST LIGHT TOWER.
 5. SEE DRAWING COMM-17 FOR CCTV COMMUNICATIONS SYSTEM CONDUIT AND CABLE LAYOUT.



CCTV-12

Edwards AND Kelcey
ONE NORTH FRANKLIN
CHICAGO, IL 60606
PHONE: (312) 251-3000
FAX: (312) 251-3015
WEB: WWW.EKCORP.COM

| REVISIONS | |
|-----------|------|
| NAME | DATE |
| | |
| | |
| | |
| | |
| | |
| | |
| | |
| | |
| | |
| | |

ILLINOIS DEPARTMENT OF TRANSPORTATION
F.A.I. 94/90 (DAN RYAN EXPRESSWAY)
31st STREET to I-57
CLOSED CIRCUIT TELEVISION
SITE LAYOUT
CAMERA DR-9A
(SHEET 2 OF 2)

SCALE: 1"=50'
DATE: October 29, 2004

DRAWN BY: DHI
CHECKED BY: MJL

P:\030019\0305\15\road\cctv\020122.sit 10/14/2004 09:23:07 AM