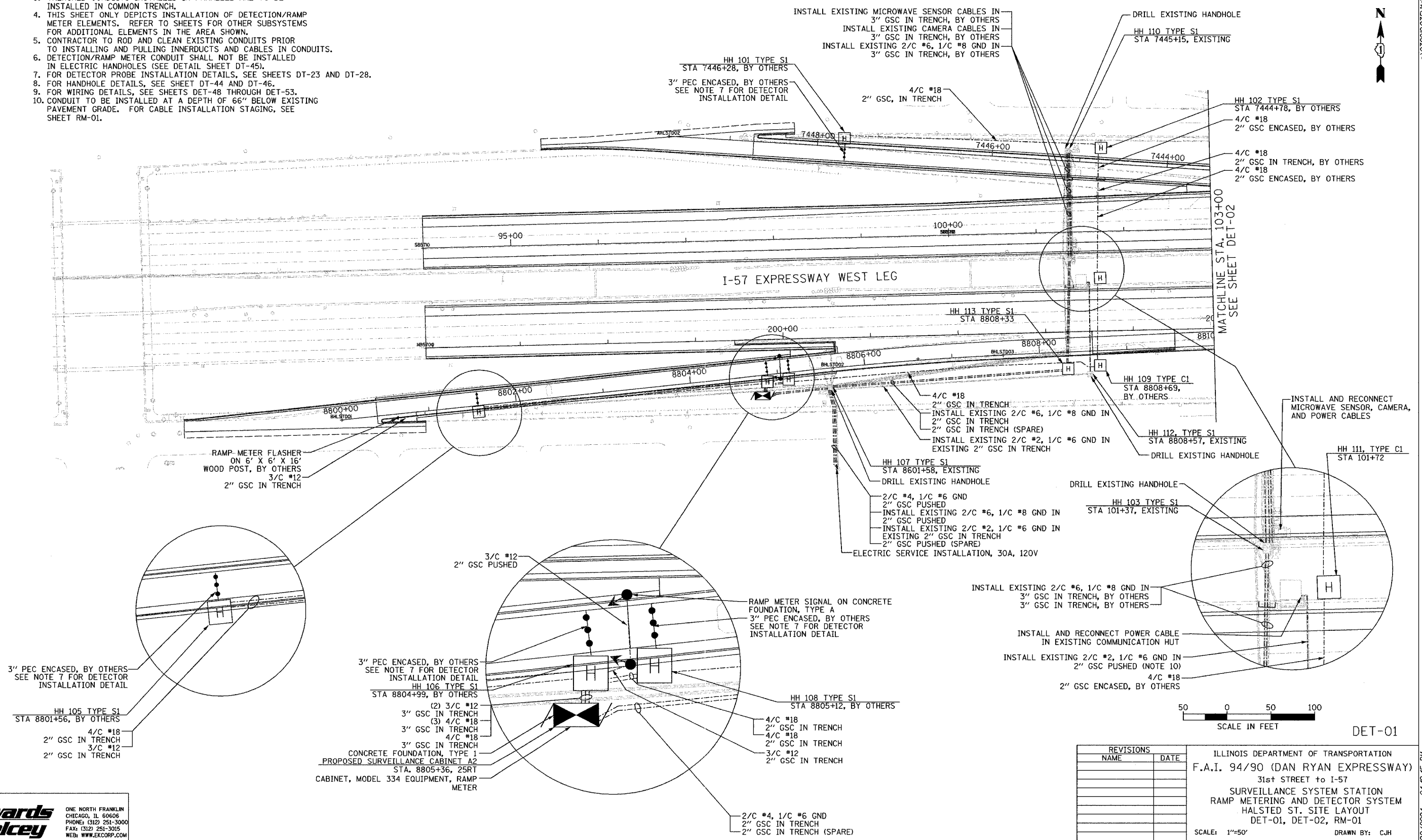


SECTION	COUNTY	TOTAL SHEETS	SHEET NO.
2003-0311	COOK	976	714
STA. 103+00.00	TO STA. 103+00.00		
FED. ROAD DIST. NO.	ILLINOIS	FED. AID PROJECT	
		62583	

**NOTES:**

- SEE DRAWING ME-01 AND ME-02 FOR ELECTRICAL SYSTEMS AND ABBREVIATIONS.
- UNLESS OTHERWISE STATED, ALL NOTED CABLE AND CONDUIT TO BE FURNISHED AND INSTALLED UNDER THIS CONTRACT.
- TRENCHED CONDUITS INSTALLED IN PARALLEL ARE TO BE INSTALLED IN COMMON TRENCH.
- THIS SHEET ONLY DEPICTS INSTALLATION OF DETECTION/RAMP METER ELEMENTS. REFER TO SHEETS FOR OTHER SUBSYSTEMS FOR ADDITIONAL ELEMENTS IN THE AREA SHOWN.
- CONTRACTOR TO ROD AND CLEAN EXISTING CONDUITS PRIOR TO INSTALLING AND PULLING INNERDUCTS AND CABLES IN CONDUITS.
- DETECTION/RAMP METER CONDUIT SHALL NOT BE INSTALLED IN ELECTRIC HANDHOLES (SEE DETAIL SHEET DT-45).
- FOR DETECTOR PROBE INSTALLATION DETAILS, SEE SHEETS DT-23 AND DT-28.
- FOR HANDHOLE DETAILS, SEE SHEET DT-44 AND DT-46.
- FOR WIRING DETAILS, SEE SHEETS DET-48 THROUGH DET-53.
- CONDUIT TO BE INSTALLED AT A DEPTH OF 66" BELOW EXISTING PAVEMENT GRADE. FOR CABLE INSTALLATION STAGING, SEE SHEET RM-01.



A:\030019\0311\Vis\cadd\cadd\DET-01.dwg

11/22/2004 04:49:45 PM

**Edwards  
AND Kelcey**  
ONE NORTH FRANKLIN  
CHICAGO, IL 60606  
PHONE: (312) 251-3000  
FAX: (312) 251-3015  
WEB: WWW.EKCORP.COM

REVISIONS		NAME	DATE
NO.	DESCRIPTION		

ILLINOIS DEPARTMENT OF TRANSPORTATION  
F.A.I. 94/90 (DAN RYAN EXPRESSWAY)  
31st STREET TO I-57  
SURVEILLANCE SYSTEM STATION  
RAMP METERING AND DETECTOR SYSTEM  
HALSTED ST. SITE LAYOUT  
DET-01, DET-02, RM-01  
SCALE: 1"=50'  
DATE: October 29, 2004  
DRAWN BY: CJH  
CHECKED BY: MJL

DET-01