

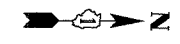
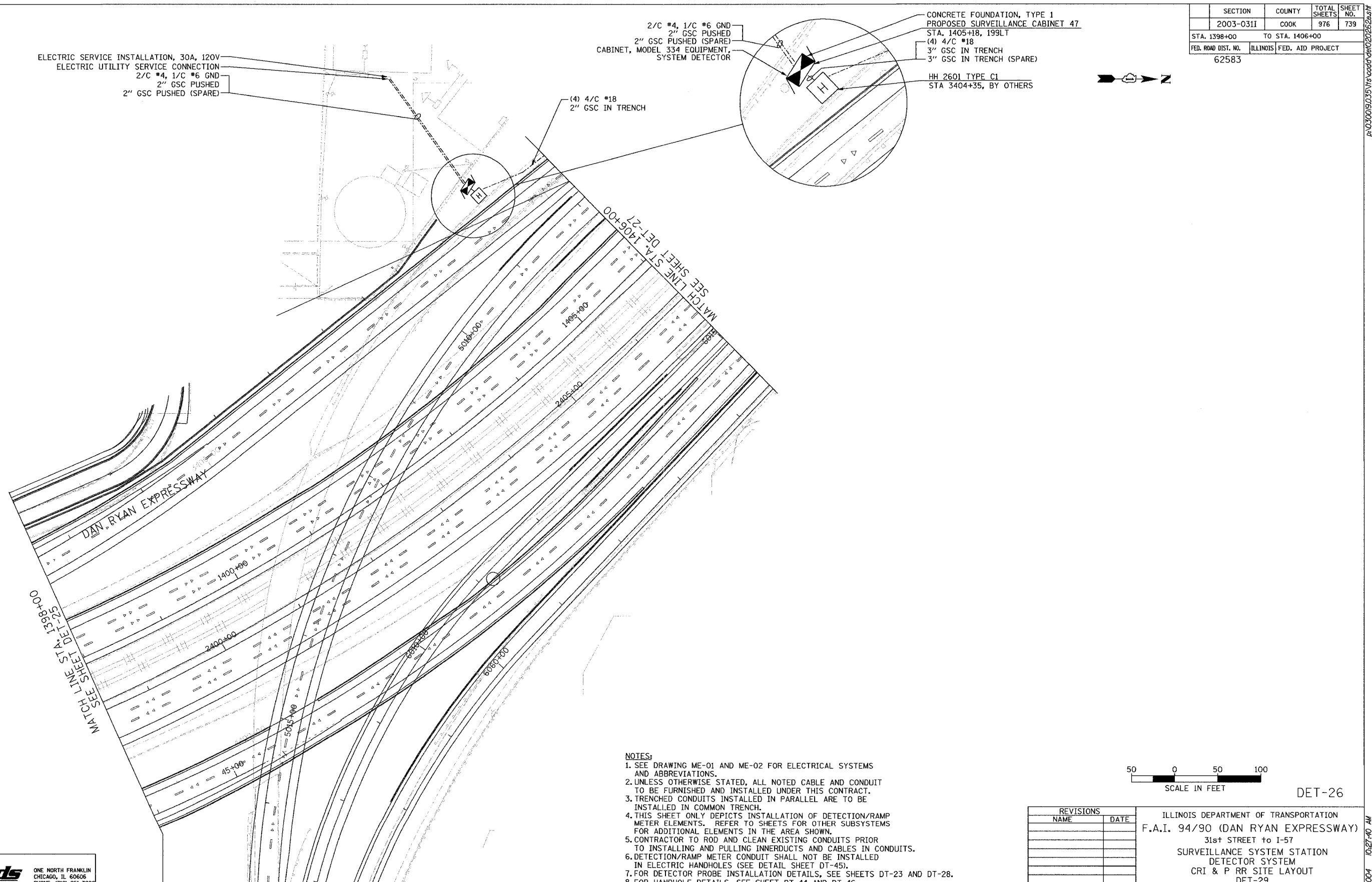
SECTION	COUNTY	TOTAL SHEETS	SHEET NO.
2003-03II	COOK	976	739
STA. 1398+00 TO STA. 1406+00			
FED. ROAD DIST. NO.	ILLINOIS	FED. AID PROJECT	
62583			

ELECTRIC SERVICE INSTALLATION, 30A, 120V
ELECTRIC UTILITY SERVICE CONNECTION
2/C #4, 1/C #6 GND
2" GSC PUSHED
2" GSC PUSHED (SPARE)

2/C #4, 1/C #6 GND
2" GSC PUSHED
2" GSC PUSHED (SPARE)
CABINET, MODEL 334 EQUIPMENT,
SYSTEM DETECTOR

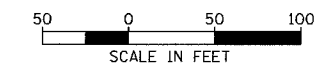
CONCRETE FOUNDATION, TYPE 1
PROPOSED SURVEILLANCE CABINET 47
STA. 1405+18, 199LT
(4) 4/C #18
3" GSC IN TRENCH
3" GSC IN TRENCH (SPARE)
HH 2601 TYPE C1
STA 3404+35, BY OTHERS

(4) 4/C #18
2" GSC IN TRENCH



NOTES:

- SEE DRAWING ME-01 AND ME-02 FOR ELECTRICAL SYSTEMS AND ABBREVIATIONS.
- UNLESS OTHERWISE STATED, ALL NOTED CABLE AND CONDUIT TO BE FURNISHED AND INSTALLED UNDER THIS CONTRACT.
- TRENCHED CONDUITS INSTALLED IN PARALLEL ARE TO BE INSTALLED IN COMMON TRENCH.
- THIS SHEET ONLY DEPICTS INSTALLATION OF DETECTION/RAMP METER ELEMENTS. REFER TO SHEETS FOR OTHER SUBSYSTEMS FOR ADDITIONAL ELEMENTS IN THE AREA SHOWN.
- CONTRACTOR TO ROD AND CLEAN EXISTING CONDUITS PRIOR TO INSTALLING AND PULLING INNERDUCTS AND CABLES IN CONDUITS.
- DETECTION/RAMP METER CONDUIT SHALL NOT BE INSTALLED IN ELECTRIC HANDHOLES (SEE DETAIL SHEET DT-45).
- FOR DETECTOR PROBE INSTALLATION DETAILS, SEE SHEETS DT-23 AND DT-28.
- FOR HANDHOLE DETAILS, SEE SHEET DT-44 AND DT-46.
- FOR WIRING DETAILS, SEE SHEETS DET-48 THROUGH DET-53



DET-26

Edwards AND Kelcey
ONE NORTH FRANKLIN
CHICAGO, IL 60606
PHONE: (312) 251-3000
FAX: (312) 251-3015
WEB: WWW.EKCORP.COM

REVISIONS	
NAME	DATE

ILLINOIS DEPARTMENT OF TRANSPORTATION
F.A.I. 94/90 (DAN RYAN EXPRESSWAY)
31st STREET TO I-57
SURVEILLANCE SYSTEM STATION
DETECTOR SYSTEM
CRI & P RR SITE LAYOUT
DET-29
SCALE: 1"=50'
DATE: October 29, 2004
DRAWN BY: CJH
CHECKED BY: MJL

11/23/2004 10:27:40 AM