

SECTION	COUNTY	TOTAL SHEETS	SHEET NO.
2003-0311	COOK	976	756
STA. 1584+00 TO STA. 1596+00			
FED. ROAD DIST. NO.	ILLINOIS	FED. AID PROJECT	
62583			

**NOTES:**

1. SEE DRAWING ME-01 AND ME-02 FOR ELECTRICAL SYSTEMS AND ABBREVIATIONS.
2. UNLESS OTHERWISE STATED, ALL NOTED CABLE AND CONDUIT TO BE FURNISHED AND INSTALLED UNDER THIS CONTRACT.
3. TRENCHED CONDUITS INSTALLED IN PARALLEL ARE TO BE INSTALLED IN COMMON TRENCH.
4. THIS SHEET ONLY DEPICTS INSTALLATION OF DETECTION/RAMP METER ELEMENTS. REFER TO SHEETS FOR OTHER SUBSYSTEMS FOR ADDITIONAL ELEMENTS IN THE AREA SHOWN.
5. CONTRACTOR TO ROD AND CLEAN EXISTING CONDUITS PRIOR TO INSTALLING AND PULLING INNERDUCTS AND CABLES IN CONDUITS.
6. DETECTION/RAMP METER CONDUIT SHALL NOT BE INSTALLED IN ELECTRIC HANDHOLES (SEE DETAIL SHEET DT-45).
7. FOR DETECTOR PROBE INSTALLATION DETAILS, SEE SHEETS DT-23 AND DT-28.
8. FOR HANDHOLE DETAILS, SEE SHEET DT-44 AND DT-46.
9. FOR WIRING DETAILS, SEE SHEETS DET-48 THROUGH DET-53

CONCRETE FOUNDATION, TYPE 1, BY OTHERS

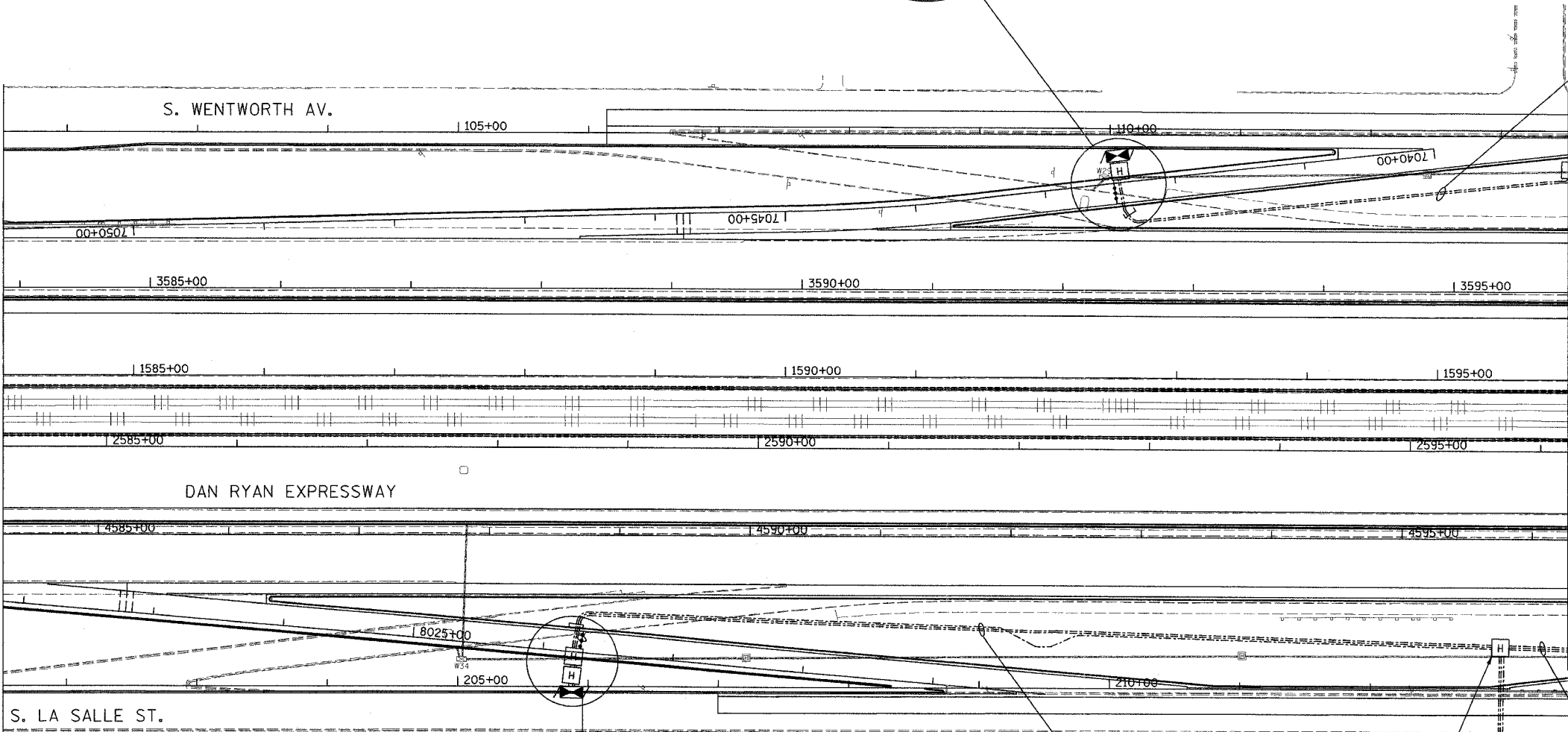
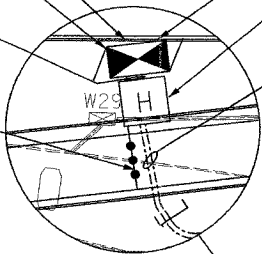
PROPOSED SURVEILLANCE CABINET 29  
STA. 7042+40, 22RT

- 4/C #18
- 3" GSC IN TRENCH, BY OTHERS
- 2/C #4, 1/C #6 GND
- 2" GSC IN TRENCH, BY OTHERS
- 2" GSC IN TRENCH, BY OTHERS (SPARE)

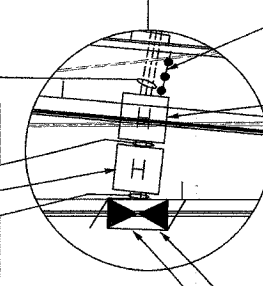
3" PEC ENCASED, BY OTHERS  
SEE NOTE 7 FOR DETECTOR  
INSTALLATION DETAIL

CABINET, MODEL 334 EQUIPMENT,  
SYSTEM DETECTOR  
HH 4302/500, TYPE C1  
STA. 7042+40, BY OTHERS

- 2/C #4, 1/C #6 GND
- 2" GSC ENCASED, BY OTHERS
- 2" GSC ENCASED, BY OTHERS (SPARE)



- 4/C #18
- 2" GSC ENCASED, BY OTHERS
- 2/C #2, 1/C #6 GND
- 2" GSC ENCASED, BY OTHERS
- 2" GSC ENCASED, BY OTHERS (SPARE)
- (2)4/C #18
- 3" GSC IN TRENCH, BY OTHERS
- 2/C #2, 1/C #6 GND
- 2" GSC IN TRENCH, BY OTHERS
- 2" GSC IN TRENCH (SPARE), BY OTHERS
- HH 4304/1501, TYPE C1
- STA. 8026+25, BY OTHERS
- (2)4/C #18
- 3" GSC IN TRENCH, BY OTHERS
- 2/C #2, 1/C #6 GND
- 2" GSC IN TRENCH, BY OTHERS
- 2" GSC IN TRENCH (SPARE), BY OTHERS



3" PEC ENCASED, BY OTHERS  
SEE NOTE 7 FOR DETECTOR  
INSTALLATION DETAIL

HH 4303/1500, TYPE S1 (SPECIAL)  
STA. 8026+25, BY OTHERS

PROPOSED SURVEILLANCE CABINET 32  
STA. 8026+25, 24RT

CONCRETE FOUNDATION, TYPE 1, BY OTHERS

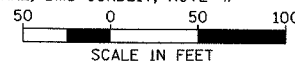
- 4/C #18
- 2" GSC IN TRENCH
- 2/C #2, 1/C #6 GND
- 2" GSC IN TRENCH
- 2" GSC IN TRENCH (SPARE)

HH 4306 TYPE S1  
STA 2595+70

- 3/C #2/0, 1/C #6 GND (DMS CABLE, NOTE 4)
- 3" GSC PUSHED (DMS CONDUIT, NOTE 4)
- 2/C #2, 1/C #6 GND
- 2" GSC PUSHED
- 2" GSC PUSHED (SPARE, DMS CONDUIT, NOTE 4)
- ELECTRIC SERVICE INSTALLATION, 100A, 120/240V  
APPROXIMATELY 130' EAST OF LA SALLE ST.  
ELECTRIC UTILITY SERVICE CONNECTION

- 2/C #4, 1/C #6 GND
- 2" GSC IN TRENCH
- 2" GSC IN TRENCH (SPARE)

- 4/C #18
- 2" GSC IN TRENCH
- 3/C #2/0, 1/C #6 GND (DMS CABLE, NOTE 4)
- 3" GSC IN TRENCH (DMS CONDUIT, NOTE 4)
- 2" GSC IN TRENCH (SPARE, DMS CONDUIT, NOTE 4)



SCALE IN FEET

DET-43

**Edwards  
AND Kelcey**  
ONE NORTH FRANKLIN  
CHICAGO, IL 60606  
PHONE: (312) 251-3000  
FAX: (312) 251-3015  
WEB: WWW.EKCORP.COM

REVISIONS	
NAME	DATE

ILLINOIS DEPARTMENT OF TRANSPORTATION  
F.A.I. 94/90 (DAN RYAN EXPRESSWAY)  
31st STREET TO I-57  
SURVEILLANCE SYSTEM STATION  
DETECTOR SYSTEM  
37TH ST. SITE LAYOUT  
DET-47, DET-48, DET-49, DET-50

SCALE: 1"=50'  
DATE: October 29, 2004  
DRAWN BY: CJH  
CHECKED BY: MJL

P:\0300\03005\N\15\150-41.dwg