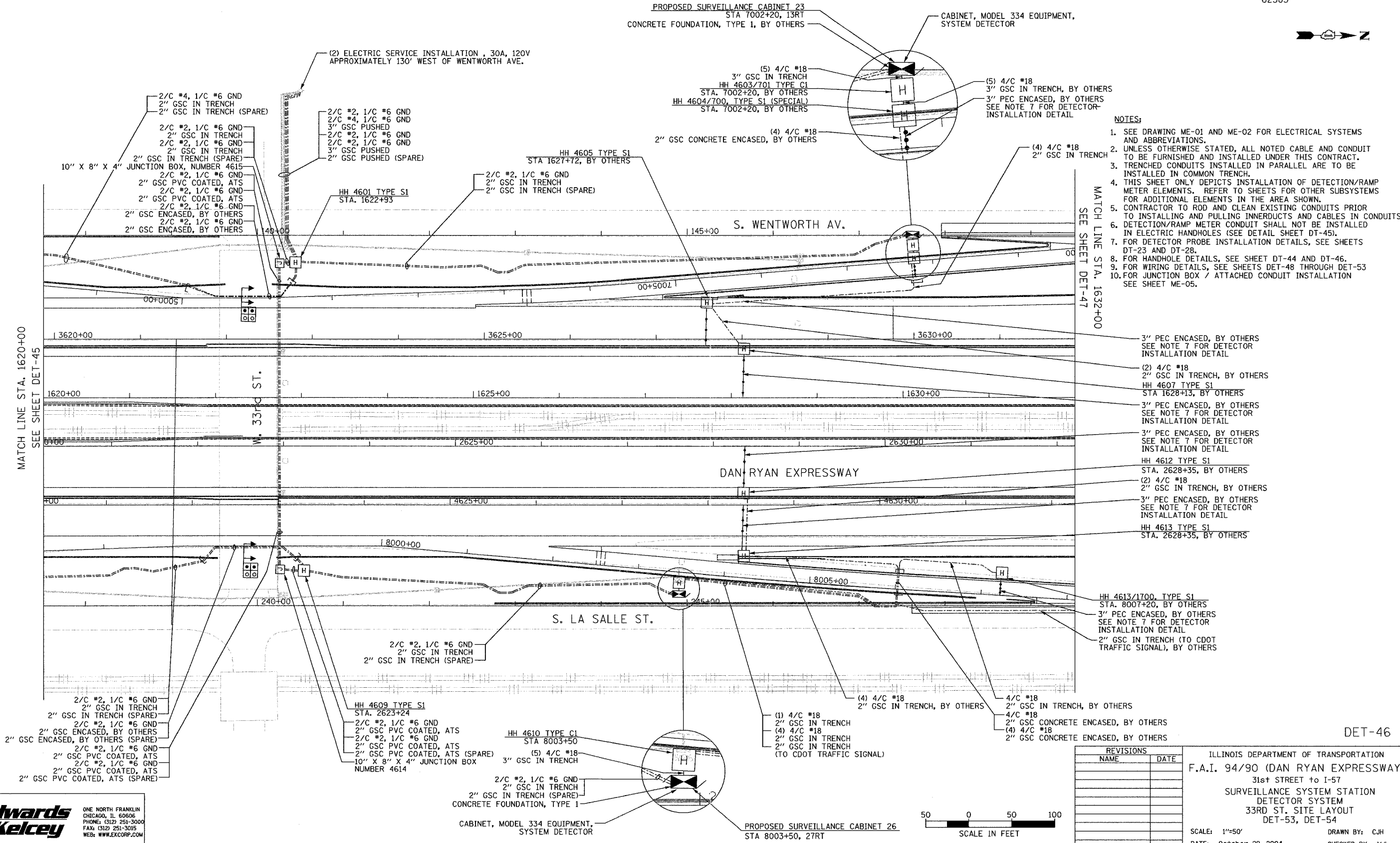


SECTION	COUNTY	TOTAL SHEETS	SHEET NO.
2003-0311	COOK	976	759
STA. 1620+00 TO STA. 1632+00			
FED. ROAD DIST. NO. ILLINOIS		FED. AID PROJECT	
62583			



- NOTES:**
1. SEE DRAWING ME-01 AND ME-02 FOR ELECTRICAL SYSTEMS AND ABBREVIATIONS.
 2. UNLESS OTHERWISE STATED, ALL NOTED CABLE AND CONDUIT TO BE FURNISHED AND INSTALLED UNDER THIS CONTRACT.
 3. TRENCHED CONDUITS INSTALLED IN PARALLEL ARE TO BE INSTALLED IN COMMON TRENCH.
 4. THIS SHEET ONLY DEPICTS INSTALLATION OF DETECTION/RAMP METER ELEMENTS. REFER TO SHEETS FOR OTHER SUBSYSTEMS FOR ADDITIONAL ELEMENTS IN THE AREA SHOWN.
 5. CONTRACTOR TO ROD AND CLEAN EXISTING CONDUITS PRIOR TO INSTALLING AND PULLING INNERDUCTS AND CABLES IN CONDUITS.
 6. DETECTION/RAMP METER CONDUIT SHALL NOT BE INSTALLED IN ELECTRIC HANDHOLES (SEE DETAIL SHEET DT-45).
 7. FOR DETECTOR PROBE INSTALLATION DETAILS, SEE SHEETS DT-23 AND DT-28.
 8. FOR HANDHOLE DETAILS, SEE SHEET DT-44 AND DT-46.
 9. FOR WIRING DETAILS, SEE SHEETS DET-48 THROUGH DET-53.
 10. FOR JUNCTION BOX / ATTACHED CONDUIT INSTALLATION SEE SHEET ME-05.

- 3" PEC ENCASED, BY OTHERS SEE NOTE 7 FOR DETECTOR INSTALLATION DETAIL
- (2) 4/C #18
2" GSC IN TRENCH, BY OTHERS
HH 4607 TYPE S1
STA 1628+13, BY OTHERS
- 3" PEC ENCASED, BY OTHERS SEE NOTE 7 FOR DETECTOR INSTALLATION DETAIL
- 3" PEC ENCASED, BY OTHERS SEE NOTE 7 FOR DETECTOR INSTALLATION DETAIL
- HH 4612 TYPE S1
STA. 2628+35, BY OTHERS
(2) 4/C #18
2" GSC IN TRENCH, BY OTHERS
- 3" PEC ENCASED, BY OTHERS SEE NOTE 7 FOR DETECTOR INSTALLATION DETAIL
- HH 4613 TYPE S1
STA. 2628+35, BY OTHERS

- HH 4613/1700, TYPE S1
STA. 8007+20, BY OTHERS
- 3" PEC ENCASED, BY OTHERS SEE NOTE 7 FOR DETECTOR INSTALLATION DETAIL
- 2" GSC IN TRENCH (TO CDOT TRAFFIC SIGNAL), BY OTHERS

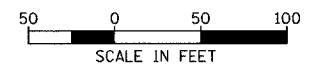
- (1) 4/C #18
2" GSC IN TRENCH
- (4) 4/C #18
2" GSC IN TRENCH
- (4) 4/C #18
2" GSC IN TRENCH (TO CDOT TRAFFIC SIGNAL)
- (4) 4/C #18
2" GSC IN TRENCH, BY OTHERS
- 4/C #18
2" GSC IN TRENCH, BY OTHERS
- 4/C #18
2" GSC CONCRETE ENCASED, BY OTHERS
- (4) 4/C #18
2" GSC CONCRETE ENCASED, BY OTHERS

REVISIONS	
NAME	DATE

ILLINOIS DEPARTMENT OF TRANSPORTATION
 F.A.I. 94/90 (DAN RYAN EXPRESSWAY)
 31st STREET TO I-57
 SURVEILLANCE SYSTEM STATION
 DETECTOR SYSTEM
 33RD ST. SITE LAYOUT
 DET-53, DET-54

SCALE: 1"=50'
 DATE: October 29, 2004
 DRAWN BY: CJH
 CHECKED BY: MJL

**Edwards
 AND Kelcey**
 ONE NORTH FRANKLIN
 CHICAGO, IL 60606
 PHONE: (312) 251-3000
 FAX: (312) 251-3015
 WEB: WWW.EKCORP.COM



11/22/2004 02:15:00 PM