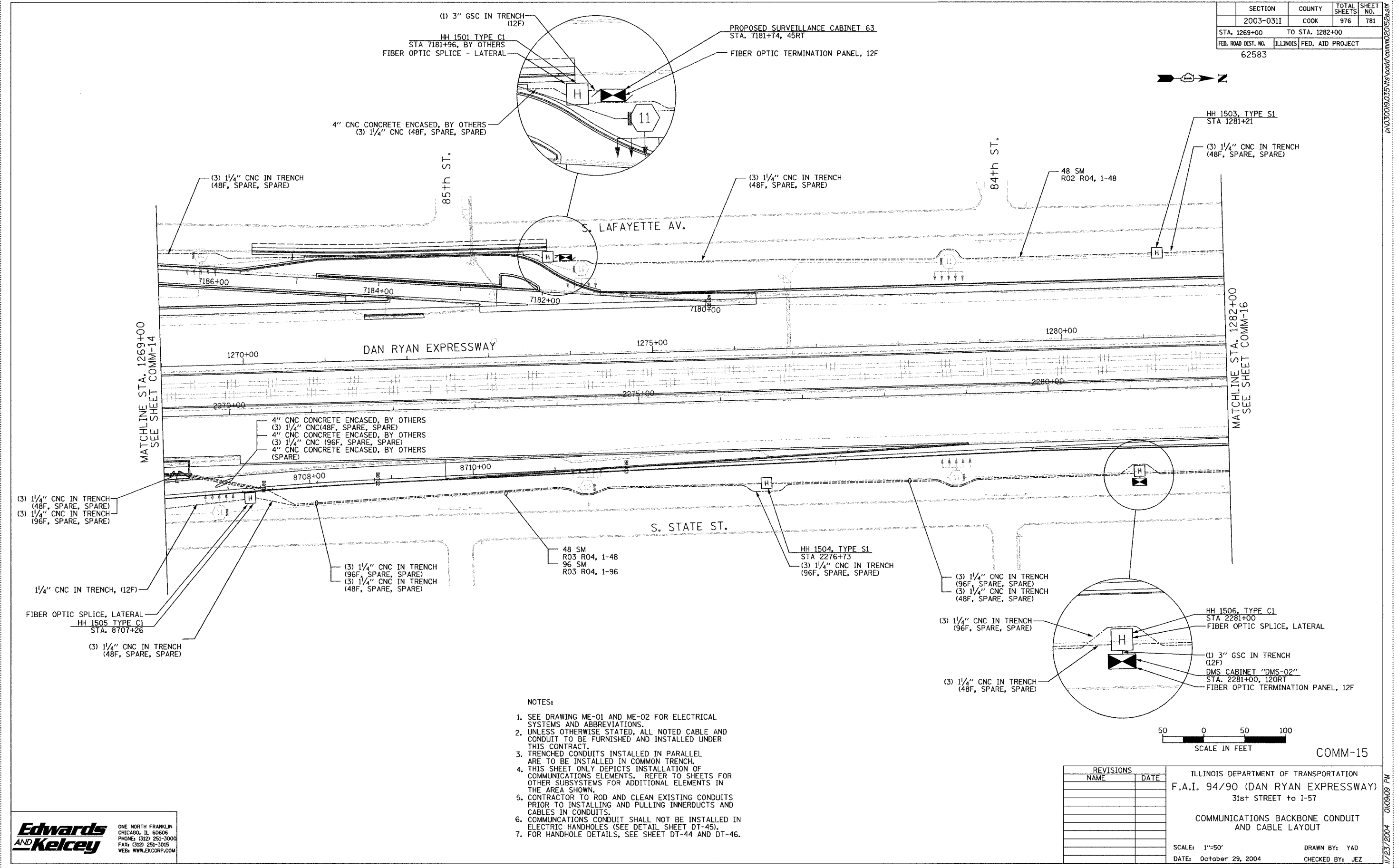


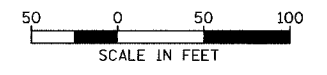
SECTION	COUNTY	TOTAL SHEETS	SHEET NO.
2003-0311	COOK	976	781
STA. 1269+00 TO STA. 1282+00			
FED. ROAD DIST. NO. ILLINOIS		FED. AID PROJECT	
62583			



MATCHLINE STA. 1269+00  
SEE SHEET COMM-14

MATCHLINE STA. 1282+00  
SEE SHEET COMM-16

- NOTES:
1. SEE DRAWING ME-01 AND ME-02 FOR ELECTRICAL SYSTEMS AND ABBREVIATIONS.
  2. UNLESS OTHERWISE STATED, ALL NOTED CABLE AND CONDUIT TO BE FURNISHED AND INSTALLED UNDER THIS CONTRACT.
  3. TRENCHED CONDUITS INSTALLED IN PARALLEL ARE TO BE INSTALLED IN COMMON TRENCH.
  4. THIS SHEET ONLY DEPICTS INSTALLATION OF COMMUNICATIONS ELEMENTS. REFER TO SHEETS FOR OTHER SUBSYSTEMS FOR ADDITIONAL ELEMENTS IN THE AREA SHOWN.
  5. CONTRACTOR TO ROD AND CLEAN EXISTING CONDUITS PRIOR TO INSTALLING AND PULLING INNERDUCTS AND CABLES IN CONDUITS.
  6. COMMUNICATIONS CONDUIT SHALL NOT BE INSTALLED IN ELECTRIC HANDHOLES (SEE DETAIL SHEET DT-45).
  7. FOR HANDHOLE DETAILS, SEE SHEET DT-44 AND DT-46.



COMM-15

**Edwards  
AND  
Kelcey**  
ONE NORTH FRANKLIN  
CHICAGO, IL 60606  
PHONE: (312) 251-3000  
FAX: (312) 251-3015  
WEB: WWW.EKCORP.COM

REVISIONS	
NAME	DATE

ILLINOIS DEPARTMENT OF TRANSPORTATION  
F.A.I. 94/90 (DAN RYAN EXPRESSWAY)  
31st STREET TO I-57

COMMUNICATIONS BACKBONE CONDUIT  
AND CABLE LAYOUT

SCALE: 1"=50'  
DATE: October 29, 2004

DRAWN BY: YAD  
CHECKED BY: JEZ

P:\030019\0311\15\15\cadd\comm\2005\2817.dwg 11/23/2004 01:05:09 PM