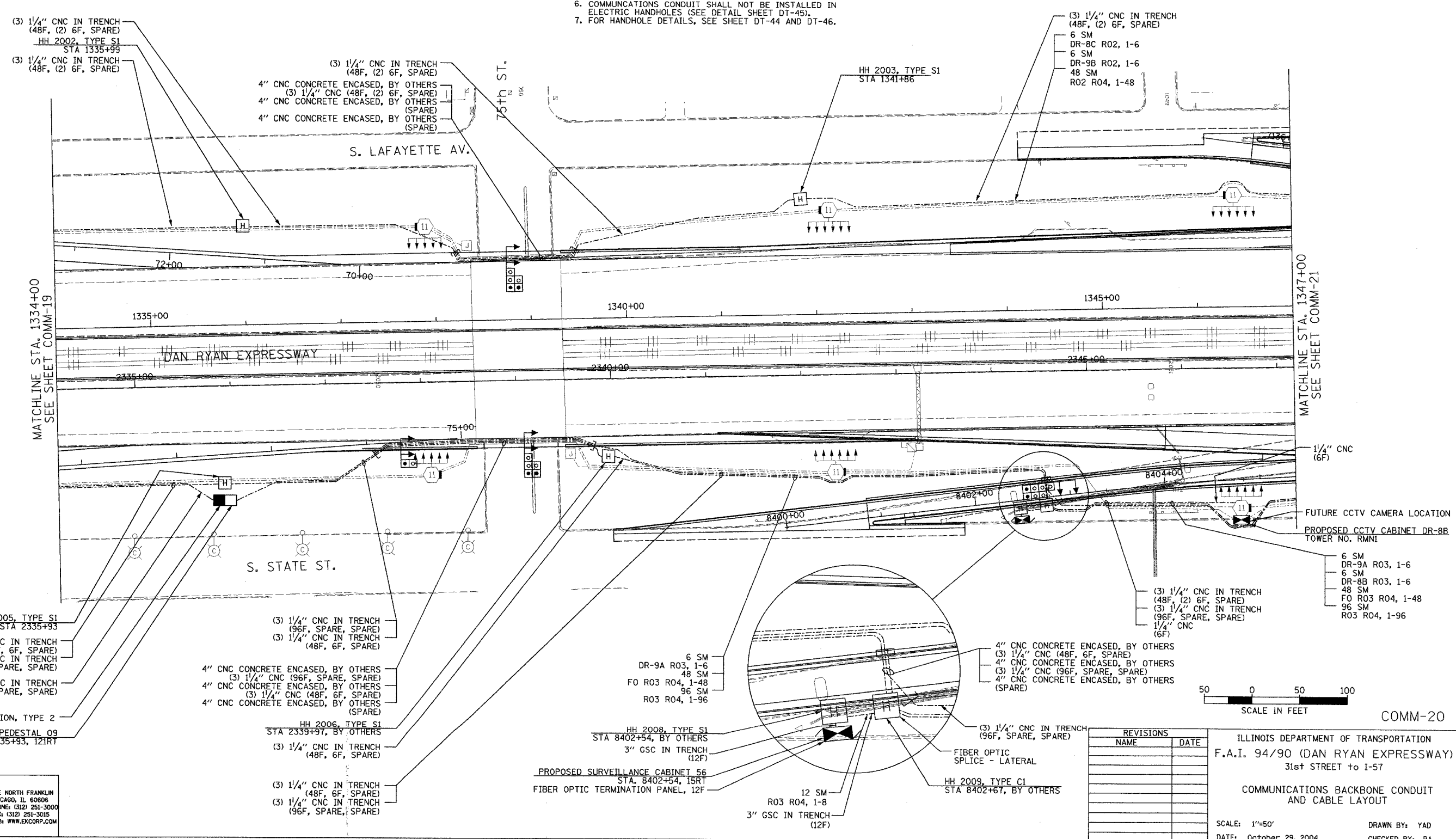


SECTION	COUNTY	TOTAL SHEETS	SHEET NO.
2003-0311	COOK	976	786
STA. 1334+00 TO STA. 1347+00			
FED. ROAD DIST. NO.	ILLINOIS	FED. AID PROJECT	
62583			

NOTES:

- SEE DRAWING ME-01 AND ME-02 FOR ELECTRICAL SYSTEMS AND ABBREVIATIONS.
- UNLESS OTHERWISE STATED, ALL NOTED CABLE AND CONDUIT TO BE FURNISHED AND INSTALLED UNDER THIS CONTRACT.
- TRENCHED CONDUITS INSTALLED IN PARALLEL ARE TO BE INSTALLED IN COMMON TRENCH.
- THIS SHEET ONLY DEPICTS INSTALLATION OF COMMUNICATIONS ELEMENTS. REFER TO SHEETS FOR OTHER SUBSYSTEMS FOR ADDITIONAL ELEMENTS IN THE AREA SHOWN.
- CONTRACTOR TO ROD AND CLEAN EXISTING CONDUITS PRIOR TO INSTALLING AND PULLING INNERDUCTS AND CABLES IN CONDUITS.
- COMMUNICATIONS CONDUIT SHALL NOT BE INSTALLED IN ELECTRIC HANDHOLES (SEE DETAIL SHEET DT-45).
- FOR HANDHOLE DETAILS, SEE SHEET DT-44 AND DT-46.



(3) 1/4" CNC IN TRENCH (48F, (2) 6F, SPARE)
HH 2002, TYPE S1
STA 1335+99

(3) 1/4" CNC IN TRENCH (48F, (2) 6F, SPARE)

(3) 1/4" CNC IN TRENCH (48F, (2) 6F, SPARE)
4" CNC CONCRETE ENCASED, BY OTHERS
(3) 1/4" CNC (48F, (2) 6F, SPARE)
4" CNC CONCRETE ENCASED, BY OTHERS (SPARE)
4" CNC CONCRETE ENCASED, BY OTHERS (SPARE)

(3) 1/4" CNC IN TRENCH (48F, (2) 6F, SPARE)
6 SM
DR-8C R02, 1-6
6 SM
DR-9B R02, 1-6
48 SM
R02 R04, 1-48

MATCHLINE STA. 1334+00
SEE SHEET COMM-19

MATCHLINE STA. 1347+00
SEE SHEET COMM-21

1/4" CNC (6F)
FUTURE CCTV CAMERA LOCATION
PROPOSED CCTV CABINET DR-8B
TOWER NO. RMNI

6 SM
DR-9A R03, 1-6
6 SM
DR-8B R03, 1-6
48 SM
FO R03 R04, 1-48
96 SM
R03 R04, 1-96

HH 2005, TYPE S1
STA 2335+93

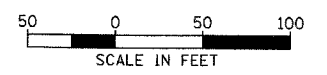
(3) 1/4" CNC IN TRENCH (48F, 6F, SPARE)
(3) 1/4" CNC IN TRENCH (96F, SPARE, SPARE)
(3) 1/4" CNC IN TRENCH (96F, SPARE, SPARE)

(3) 1/4" CNC IN TRENCH (96F, SPARE, SPARE)
(3) 1/4" CNC IN TRENCH (48F, 6F, SPARE)

4" CNC CONCRETE ENCASED, BY OTHERS
(3) 1/4" CNC (96F, SPARE, SPARE)
4" CNC CONCRETE ENCASED, BY OTHERS
(3) 1/4" CNC (48F, 6F, SPARE)
4" CNC CONCRETE ENCASED, BY OTHERS (SPARE)

6 SM
DR-9A R03, 1-6
48 SM
FO R03 R04, 1-48
96 SM
R03 R04, 1-96

4" CNC CONCRETE ENCASED, BY OTHERS
(3) 1/4" CNC (48F, 6F, SPARE)
4" CNC CONCRETE ENCASED, BY OTHERS
(3) 1/4" CNC (96F, SPARE, SPARE)
4" CNC CONCRETE ENCASED, BY OTHERS (SPARE)



COMM-20

(2) CONCRETE FOUNDATION, TYPE 2
PROPOSED PULLING PEDESTAL 09
STA. 2335+93, 121RT

HH 2006, TYPE S1
STA 2339+97, BY OTHERS

(3) 1/4" CNC IN TRENCH (48F, 6F, SPARE)

HH 2008, TYPE S1
STA 8402+54, BY OTHERS

3" GSC IN TRENCH (12F)

PROPOSED SURVEILLANCE CABINET 56
STA. 8402+54, 15RT
FIBER OPTIC TERMINATION PANEL, 12F

(3) 1/4" CNC IN TRENCH (96F, SPARE, SPARE)

FIBER OPTIC SPLICE - LATERAL

HH 2009, TYPE C1
STA 8402+67, BY OTHERS

12 SM
R03 R04, 1-8
3" GSC IN TRENCH (12F)

REVISIONS	
NAME	DATE

ILLINOIS DEPARTMENT OF TRANSPORTATION
F.A.I. 94/90 (DAN RYAN EXPRESSWAY)
31st STREET to I-57

COMMUNICATIONS BACKBONE CONDUIT
AND CABLE LAYOUT

SCALE: 1"=50'
DATE: October 29, 2004
DRAWN BY: YAD
CHECKED BY: BA

Edwards AND Kelcey
ONE NORTH FRANKLIN
CHICAGO, IL 60606
PHONE: (312) 251-3000
FAX: (312) 251-3015
WEB: WWW.EDKCORP.COM

P:\030019\0315\1347\Comm\20202020.dwg 10/14/2004 10:02:46 PM