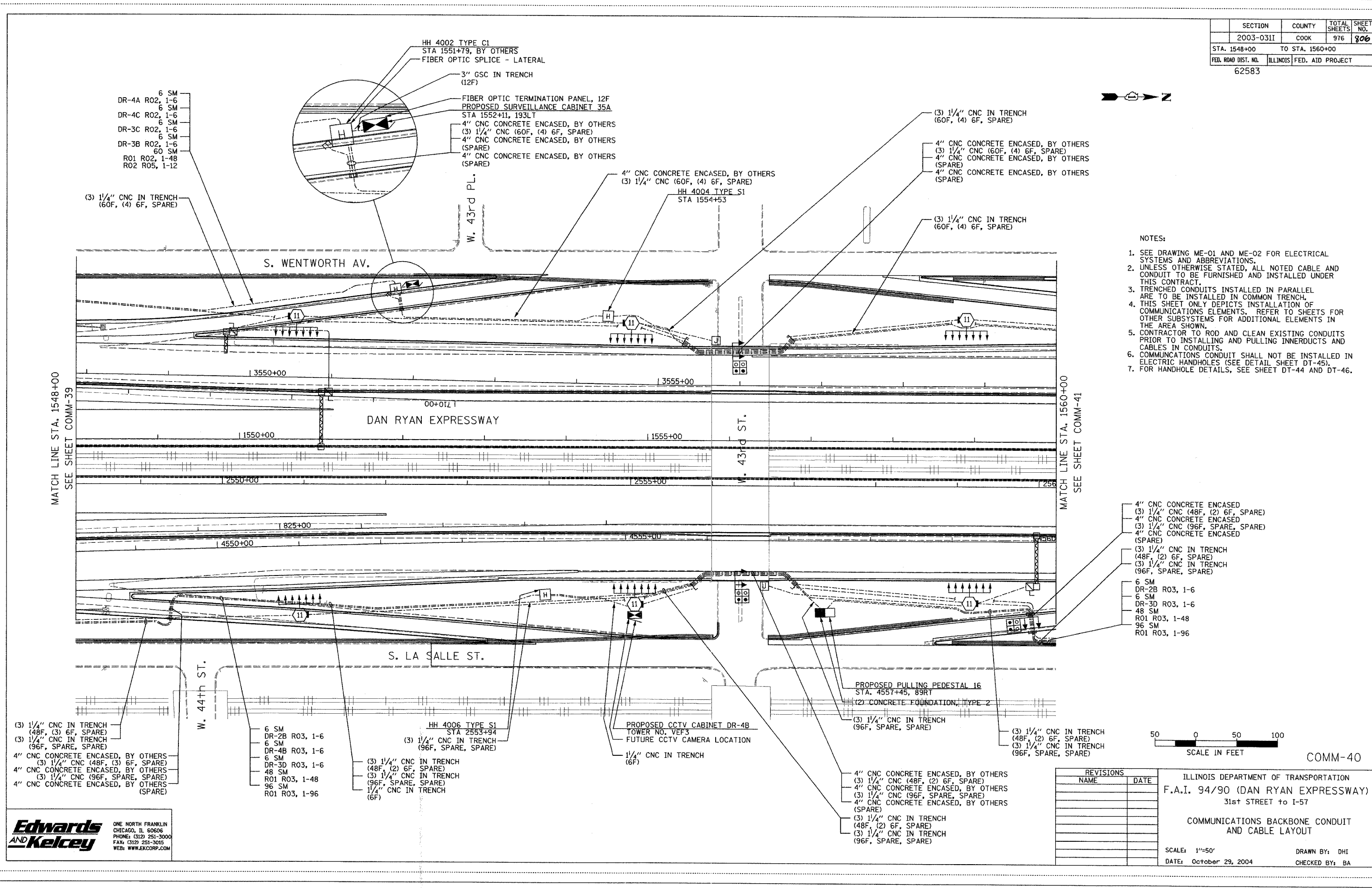


SECTION	COUNTY	TOTAL SHEETS	SHEET NO.
2003-0311	COOK	976	806
STA. 1548+00 TO STA. 1560+00			
FED. ROAD DIST. NO.	ILLINOIS FED. AID PROJECT		
62583			



P:\030019\0311\1548-1560\comm-40.dwg



- NOTES:
- SEE DRAWING ME-01 AND ME-02 FOR ELECTRICAL SYSTEMS AND ABBREVIATIONS.
 - UNLESS OTHERWISE STATED, ALL NOTED CABLE AND CONDUIT TO BE FURNISHED AND INSTALLED UNDER THIS CONTRACT.
 - TRENCHED CONDUITS INSTALLED IN PARALLEL ARE TO BE INSTALLED IN COMMON TRENCH.
 - THIS SHEET ONLY DEPICTS INSTALLATION OF COMMUNICATIONS ELEMENTS. REFER TO SHEETS FOR OTHER SUBSYSTEMS FOR ADDITIONAL ELEMENTS IN THE AREA SHOWN.
 - CONTRACTOR TO ROD AND CLEAN EXISTING CONDUITS PRIOR TO INSTALLING AND PULLING INNERDUCTS AND CABLES IN CONDUITS.
 - COMMUNICATIONS CONDUIT SHALL NOT BE INSTALLED IN ELECTRIC HANDHOLES (SEE DETAIL SHEET DT-45).
 - FOR HANDHOLE DETAILS, SEE SHEET DT-44 AND DT-46.

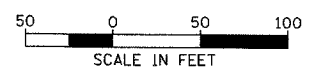
- 4" CNC CONCRETE ENCASED
- (3) 1/4" CNC (48F, (2) 6F, SPARE)
- 4" CNC CONCRETE ENCASED
- (3) 1/4" CNC (96F, SPARE, SPARE)
- 4" CNC CONCRETE ENCASED (SPARE)
- (3) 1/4" CNC IN TRENCH (48F, (2) 6F, SPARE)
- (3) 1/4" CNC IN TRENCH (96F, SPARE, SPARE)
- 6 SM DR-2B R03, 1-6
- 6 SM DR-3D R03, 1-6
- 48 SM R01 R03, 1-48
- 96 SM R01 R03, 1-96

- (3) 1/4" CNC IN TRENCH (48F, (3) 6F, SPARE)
- (3) 1/4" CNC IN TRENCH (96F, SPARE, SPARE)
- 4" CNC CONCRETE ENCASED, BY OTHERS (3) 1/4" CNC (48F, (3) 6F, SPARE)
- 4" CNC CONCRETE ENCASED, BY OTHERS (3) 1/4" CNC (96F, SPARE, SPARE)
- 4" CNC CONCRETE ENCASED, BY OTHERS (SPARE)

- 6 SM DR-2B R03, 1-6
- 6 SM DR-4B R03, 1-6
- 6 SM DR-3D R03, 1-6
- 48 SM R01 R03, 1-48
- 96 SM R01 R03, 1-96

- (3) 1/4" CNC IN TRENCH (48F, (2) 6F, SPARE)
- (3) 1/4" CNC IN TRENCH (96F, SPARE, SPARE)
- 1/4" CNC IN TRENCH (6F)

- 4" CNC CONCRETE ENCASED, BY OTHERS (3) 1/4" CNC (48F, (2) 6F, SPARE)
- 4" CNC CONCRETE ENCASED, BY OTHERS (3) 1/4" CNC (96F, SPARE, SPARE)
- 4" CNC CONCRETE ENCASED, BY OTHERS (SPARE)
- (3) 1/4" CNC IN TRENCH (48F, (2) 6F, SPARE)
- (3) 1/4" CNC IN TRENCH (96F, SPARE, SPARE)



COMM-40

Edwards and Kelcey
 ONE NORTH FRANKLIN
 CHICAGO, IL 60606
 PHONE: (312) 251-3000
 FAX: (312) 251-3015
 WEB: WWW.EKCORP.COM

REVISIONS	
NAME	DATE

ILLINOIS DEPARTMENT OF TRANSPORTATION
 F.A.I. 94/90 (DAN RYAN EXPRESSWAY)
 31st STREET TO I-57
 COMMUNICATIONS BACKBONE CONDUIT
 AND CABLE LAYOUT
 SCALE: 1"=50'
 DATE: October 29, 2004
 DRAWN BY: DHI
 CHECKED BY: BA

01/14/2004 04:16:58 PM