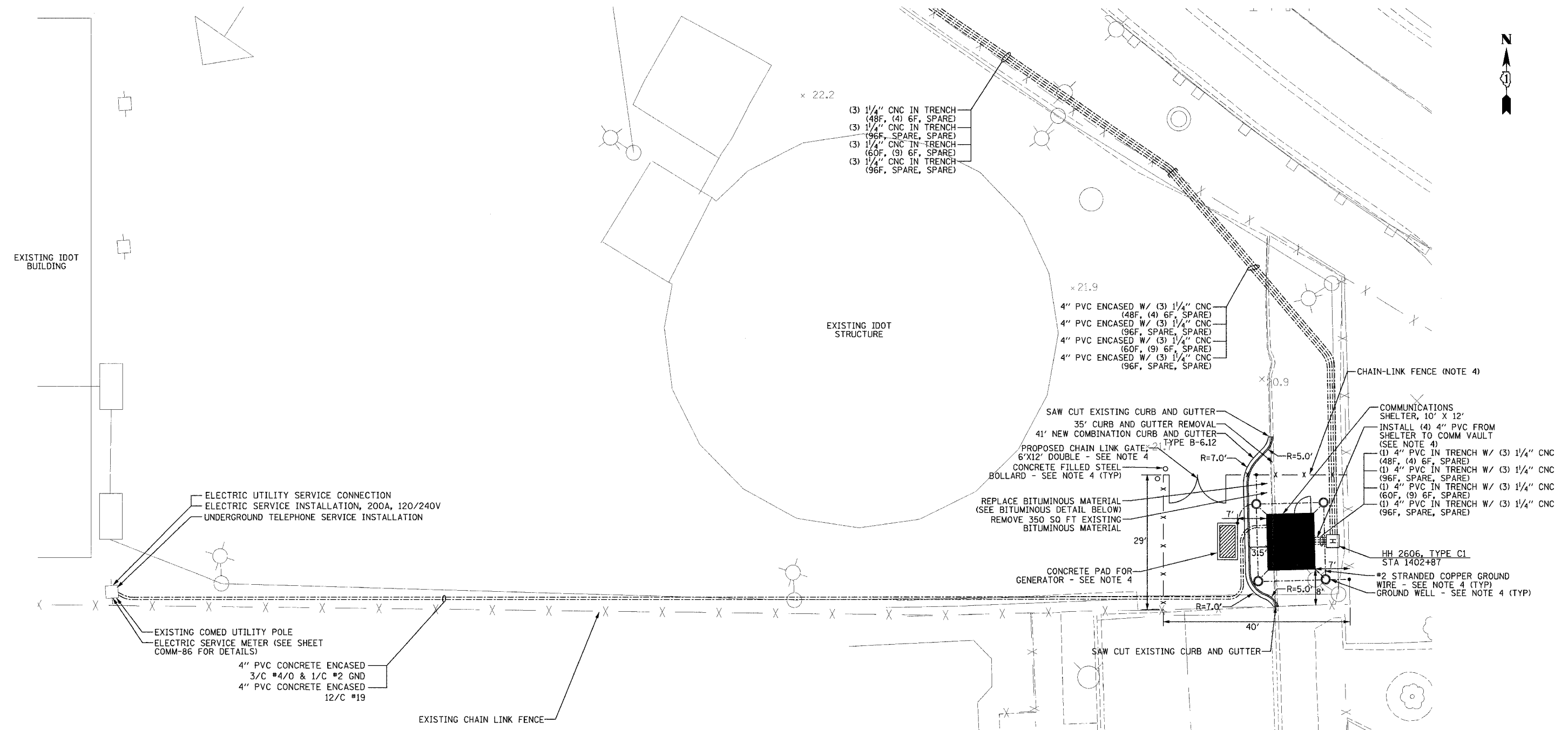


SECTION	COUNTY	TOTAL SHEETS	SHEET NO.
2003-0311	COOK	976	846
STA.	TO STA.		
FED. ROAD DIST. NO.	ILLINOIS	FED. AID PROJECT	
62583			



PA:030009.035\15\road\62583\2003\0311\846.dwg



ELECTRIC UTILITY SERVICE CONNECTION
ELECTRIC SERVICE INSTALLATION, 200A, 120/240V
UNDERGROUND TELEPHONE SERVICE INSTALLATION

EXISTING COMED UTILITY POLE
ELECTRIC SERVICE METER (SEE SHEET COMM-86 FOR DETAILS)

4" PVC CONCRETE ENCASED
3/C #4/0 & 1/C #2 GND
4" PVC CONCRETE ENCASED
12/C #19

EXISTING CHAIN LINK FENCE

(3) 1/4" CNC IN TRENCH
(48F, (4) 6F, SPARE)
(3) 1/4" CNC IN TRENCH
(96F, SPARE, SPARE)
(3) 1/4" CNC IN TRENCH
(60F, (9) 6F, SPARE)
(3) 1/4" CNC IN TRENCH
(96F, SPARE, SPARE)

4" PVC ENCASED W/ (3) 1/4" CNC
(48F, (4) 6F, SPARE)
4" PVC ENCASED W/ (3) 1/4" CNC
(96F, SPARE, SPARE)
4" PVC ENCASED W/ (3) 1/4" CNC
(60F, (9) 6F, SPARE)
4" PVC ENCASED W/ (3) 1/4" CNC
(96F, SPARE, SPARE)

SAW CUT EXISTING CURB AND GUTTER
35' CURB AND GUTTER REMOVAL
41' NEW COMBINATION CURB AND GUTTER
TYPE B-6.12
PROPOSED CHAIN LINK GATE:
6'X12' DOUBLE - SEE NOTE 4
CONCRETE FILLED STEEL
BOLLARD - SEE NOTE 4 (TYP)

REPLACE BITUMINOUS MATERIAL
(SEE BITUMINOUS DETAIL BELOW)
REMOVE 350 SQ FT EXISTING
BITUMINOUS MATERIAL

CONCRETE PAD FOR
GENERATOR - SEE NOTE 4

SAW CUT EXISTING CURB AND GUTTER

COMMUNICATIONS SHELTER, 10' X 12'
INSTALL (4) 4" PVC FROM
SHELTER TO COMM VAULT
(SEE NOTE 4)
(1) 4" PVC IN TRENCH W/ (3) 1/4" CNC
(48F, (4) 6F, SPARE)
(1) 4" PVC IN TRENCH W/ (3) 1/4" CNC
(96F, SPARE, SPARE)
(1) 4" PVC IN TRENCH W/ (3) 1/4" CNC
(60F, (9) 6F, SPARE)
(1) 4" PVC IN TRENCH W/ (3) 1/4" CNC
(96F, SPARE, SPARE)

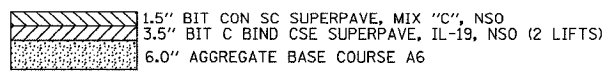
HH 2606, TYPE C1
STA 1402+87

#2 STRANDED COPPER GROUND
WIRE - SEE NOTE 4 (TYP)
GROUND WELL - SEE NOTE 4 (TYP)

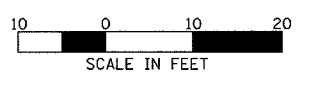
NOTES:

1. FOR COMMUNICATIONS SHELTER DETAILS, REFER TO SHEETS COMM-91 THRU COMM-94.
2. CONTRACTOR IS RESPONSIBLE FOR IDENTIFYING AND RELOCATING ALL EXISTING UNDERGROUND UTILITIES AS NECESSARY TO CONSTRUCT THE COMMUNICATIONS SHELTER.
3. CONTRACTOR SHALL COORDINATE WITH IDOT MAINTENANCE YARD PERSONNEL WHEN RELOCATING EXISTING EQUIPMENT AT SHELTER SITE.
4. DESIGNATED WORK/MATERIAL SHALL BE PAID FOR AS PART OF SHELTER.
5. PAVEMENT AND SIDEWALK REPLACEMENT SHALL BE CONSIDERED INCLUDED IN THE COST OF THE CONCRETE ENCASED CONDUIT INSTALLATION.

BITUMINOUS PAVEMENT DETAIL



x 20.50 EXISTING GRADES



REVISIONS	
NAME	DATE
REVISION 1	12/17/04

ILLINOIS DEPARTMENT OF TRANSPORTATION
F.A.I. 94/90 (DAN RYAN EXPRESSWAY)
31st STREET to I-57
**MAINTENANCE YARD SHELTER (R02)
SITE PLAN**

SCALE: _____ DRAWN BY: DHI
DATE: October 29, 2004 CHECKED BY: MJL

Edwards AND Kelcey
ONE NORTH FRANKLIN
CHICAGO, IL 60606
PHONE: (312) 251-3000
FAX: (312) 251-3015
WEB: WWW.EKCORP.COM

12/15/2004 01:50:22 PM

COMM-80