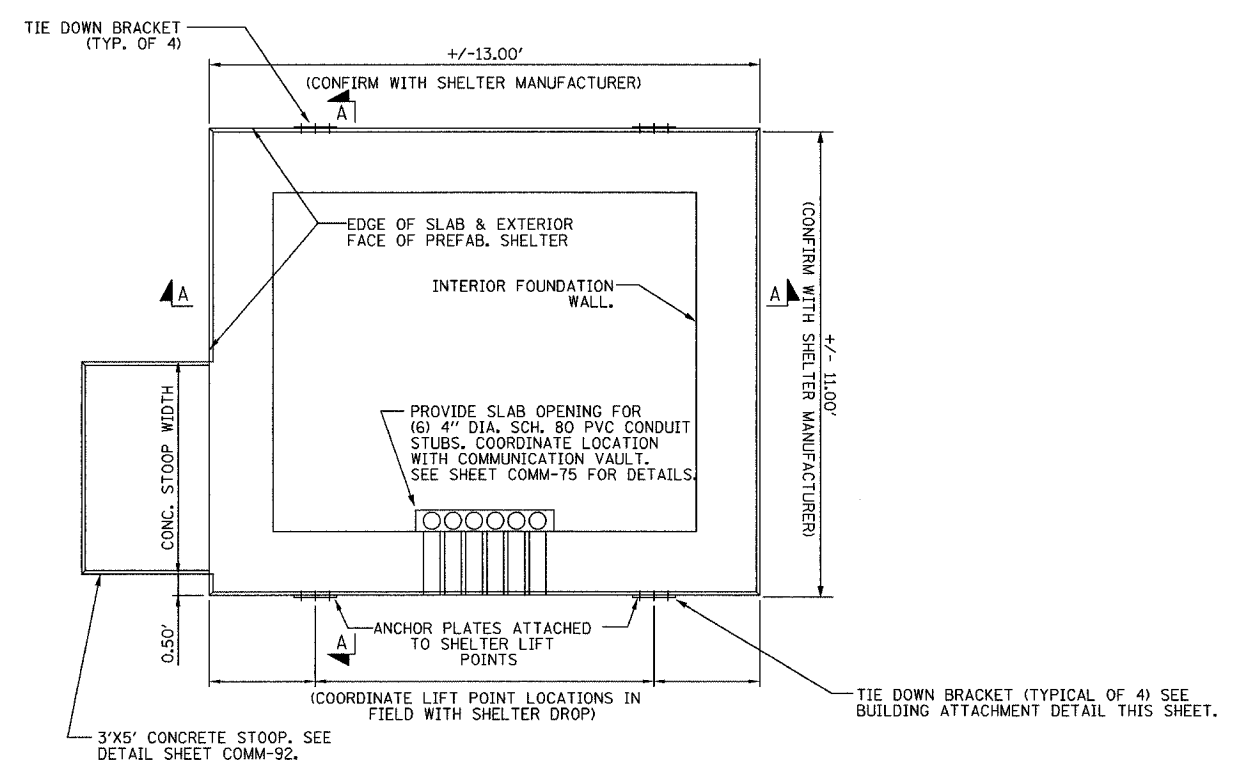
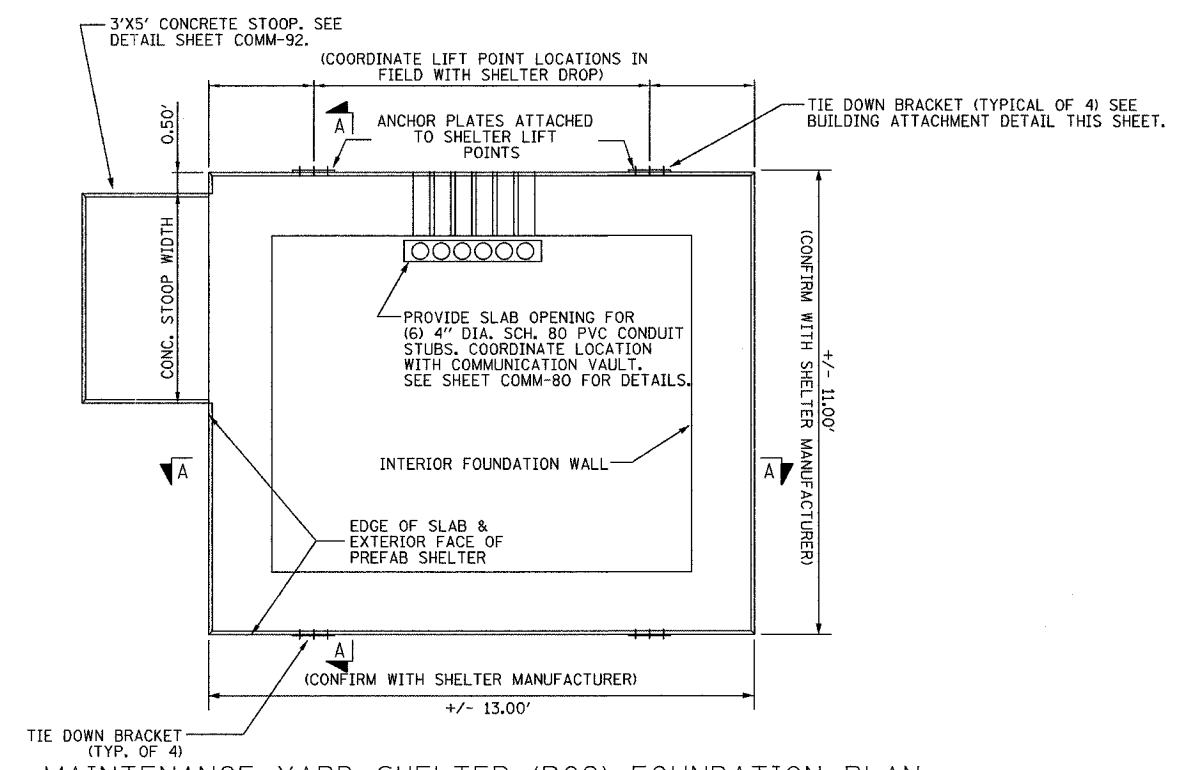


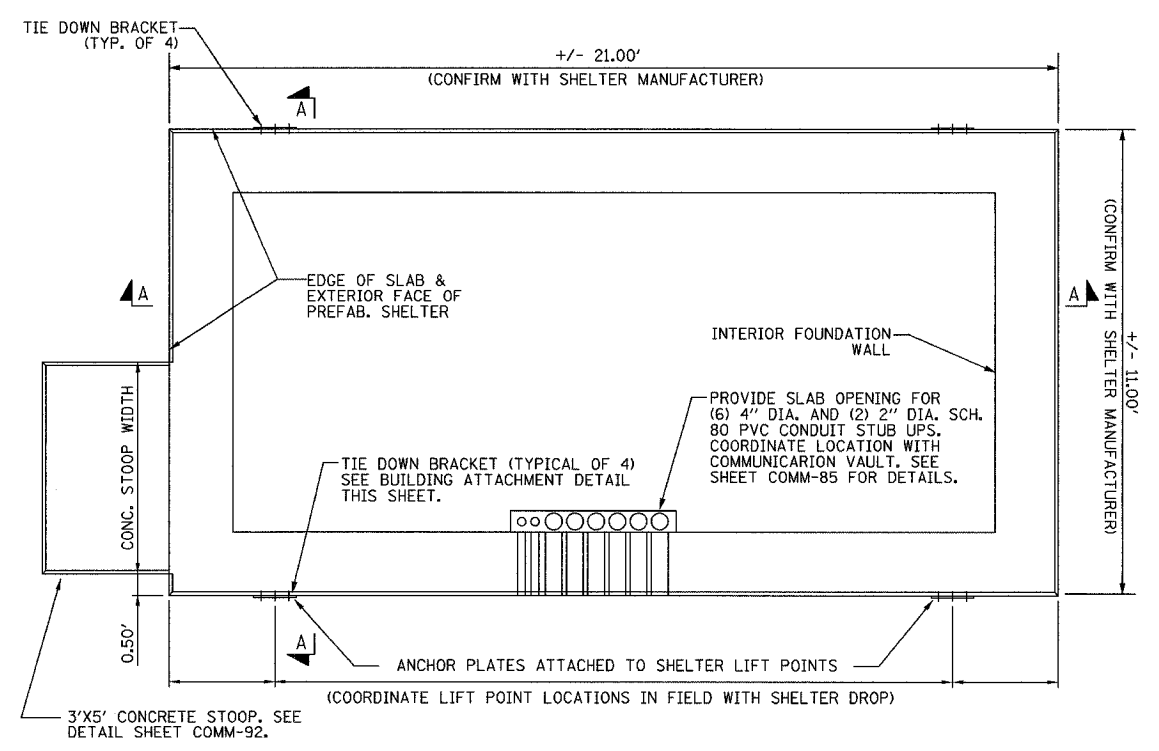
F.A.I. RTE.	SECTION	COUNTY	TOTAL SHEETS	SHEET NO.
94/90	2003-031I	COOK	976	857
STA.	TO STA.			
FED. ROAD DIST. NO.	ILLINOIS FED. AID PROJECT			
	62583			



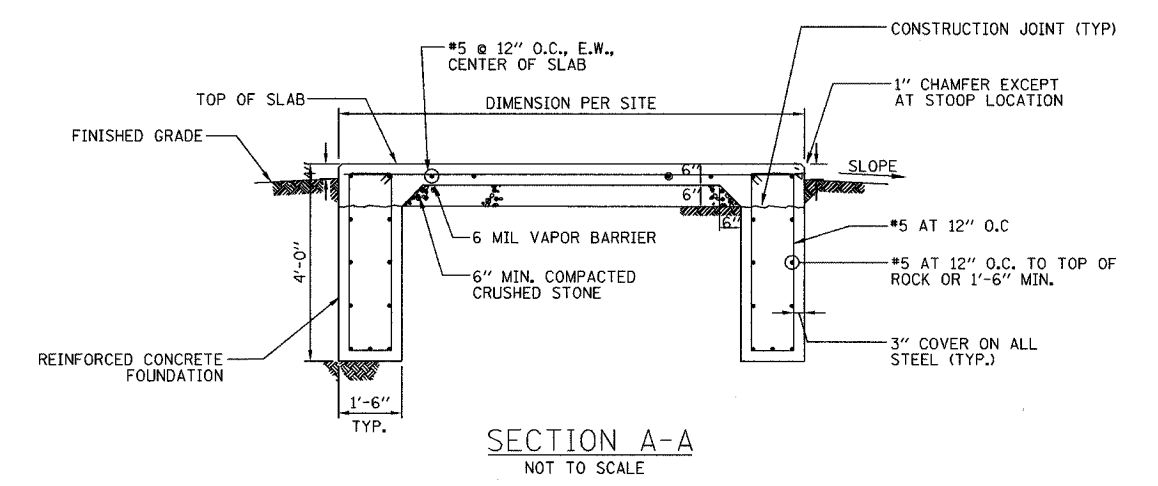
EAST SKYWAY SHELTER (R03) FOUNDATION PLAN
NOT TO SCALE



MAINTENANCE YARD SHELTER (R02) FOUNDATION PLAN
NOT TO SCALE



I-55 SHELTER (R01) FOUNDATION PLAN
NOT TO SCALE



SECTION A-A
NOT TO SCALE

- NOTES:
- CONTRACTOR SHALL DEBURR ALL SHARP EDGES AND HOLES.
 - SURFACING OF FINISHED SLAB SHALL BE LEVEL & FLAT WITHIN +/- 1/4".
 - CONTRACTOR SHALL COORDINATE THE INSTALLATION OF SHELTER ON TO ITS FOUNDATION WITH THE SHELTER FABRICATOR.
 - ALL REINFORCING BARS SHALL BE EPOXY COATED AND SHALL BE WIRE LASHED AT ALL INTERSECTIONS.
 - IF ROCK IS ENCOUNTERED, CONTRACTOR SHALL CONTACT ENGINEER IMMEDIATELY. DO NOT PROCEED UNTIL ENGINEER ISSUES REVISED FOUNDATION DESIGN BASED ON SUBSURFACE CONDITIONS.
 - COORDINATE CONDUIT ENTRY LOCATION WITH ENGINEER PER SITE PLAN DETAIL SHEET AND COMMUNICATION SHELTER FOUNDATION.

REVISIONS	
NAME	DATE

ILLINOIS DEPARTMENT OF TRANSPORTATION
F.A.I. 94/90 (DAN RYAN EXPRESSWAY)
31st STREET TO I-57
SHELTER FOUNDATION DETAILS
(SHEET 1 OF 2)

SCALE: NOT TO SCALE
DATE: October 29, 2004
DRAWN BY: JM
CHECKED BY: CS

Edwards AND Kelcey
ONE NORTH FRANKLIN
CHICAGO, IL 60606
PHONE: (312) 251-3000
FAX: (312) 251-3015
WEB: WWW.EDKORP.COM

P:\030010\030010\vis\road\01204226.sht 11/23/2004 07:29:20 AM