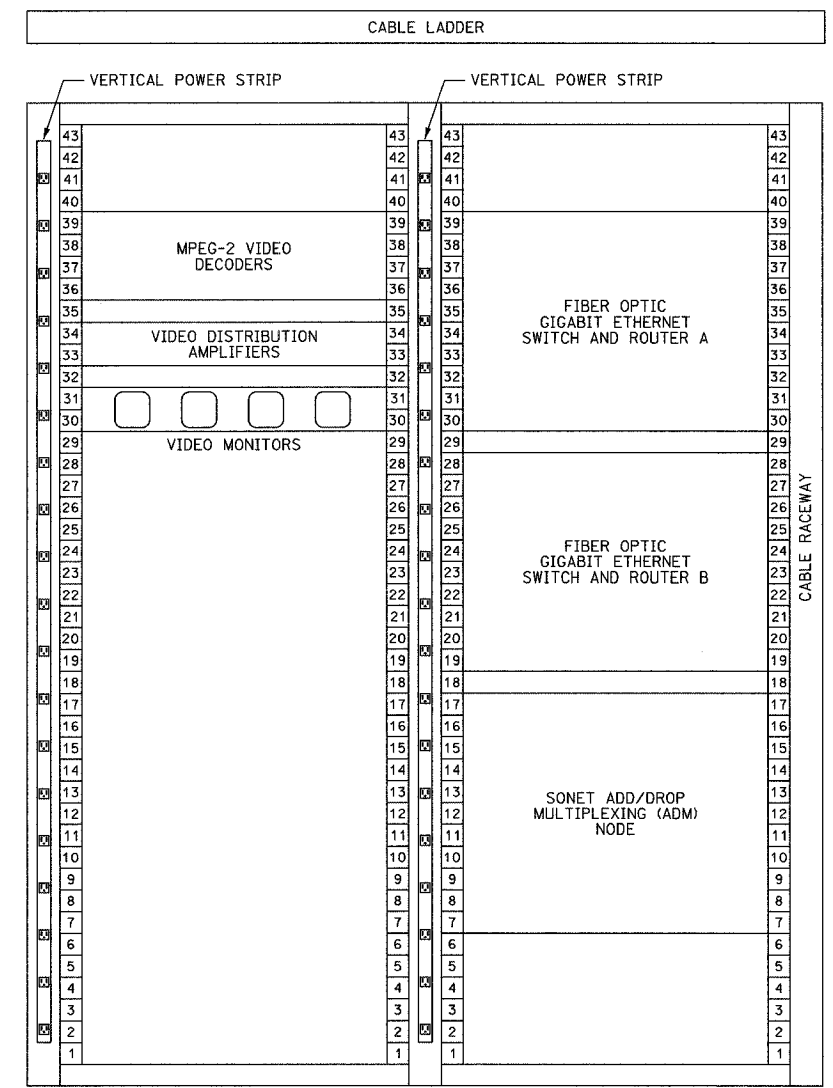
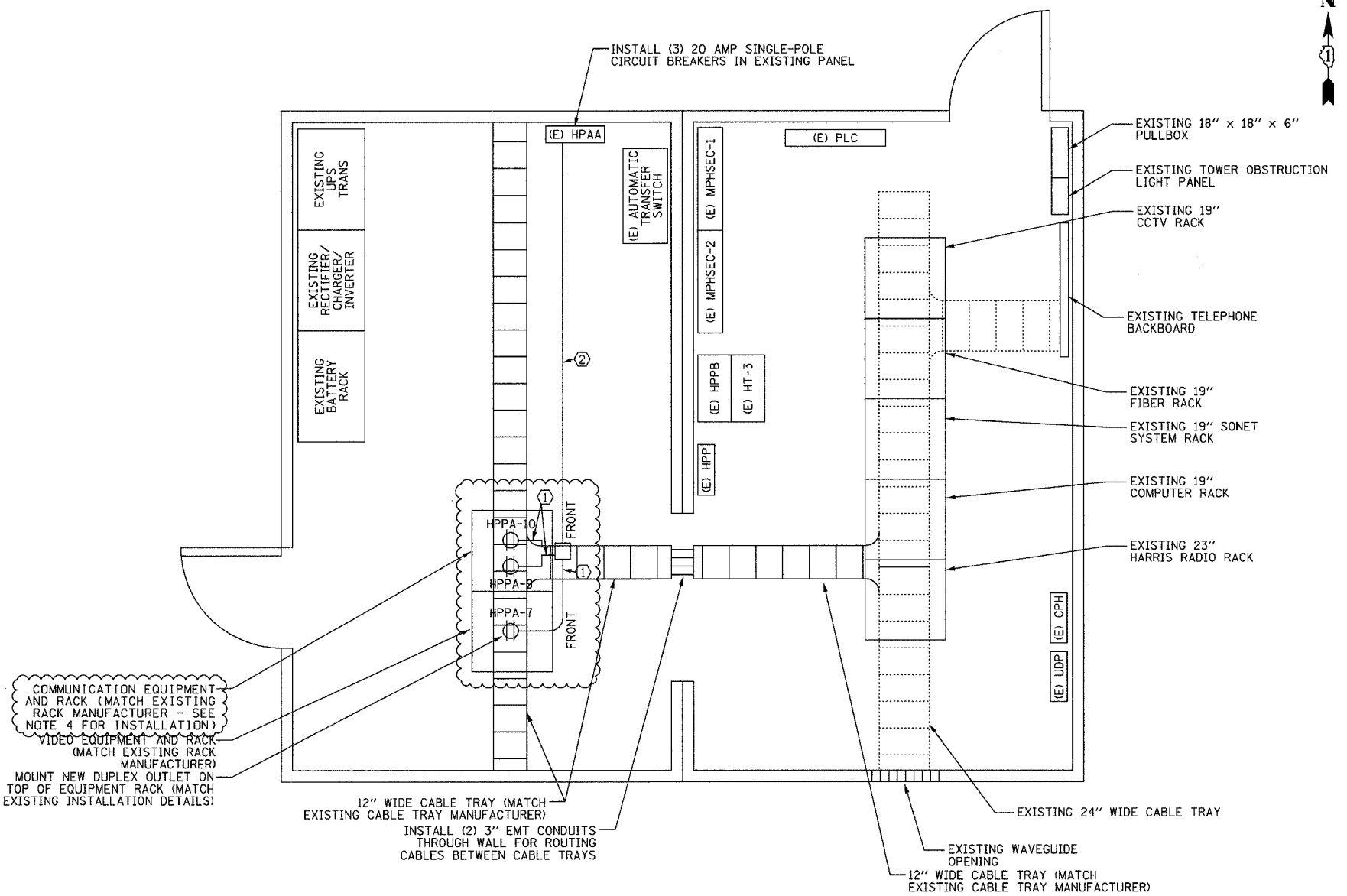


F.A.I. RTE.	SECTION	COUNTY	TOTAL SHEETS	SHEET NO.
94/90	2003-0311	COOK	976	863
STA.	TO STA.			
FED. ROAD DIST. NO.	ILLINOIS	FED. AID PROJECT		
62583				



EQUIPMENT RACK ELEVATION
NOT TO SCALE



- ① (2) #12 & (1) #12 GND, 3/4" C
- ② (2) [(2) #12 & (1) #12 GND], 1" C
- ⊕ DUPLEX RECEPTACLE
- (E) EXISTING EQUIPMENT

EQUIPMENT LAYOUT PLAN
SCALE IN FEET

- NOTES:
- UNLESS OTHERWISE NOTED, ALL EQUIPMENT IS TO BE INSTALLED UNDER THIS CONTRACT.
 - FOR EQUIPMENT WIRING DIAGRAM, SEE SHEET COMM-98.
 - CONTRACTOR SHALL MAINTAIN A MINIMUM OF 36" CLEARANCE WHEN INSTALLING NEW RACKS AND EQUIPMENT.
 - INSTALL GIGABIT ETHERNET SWITCHES ON SEPARATE ELECTRICAL CIRCUITS.
 - ALL INSTALLED EQUIPMENT SHALL HAVE ENGRAVED NAMEPLATES WITH AN ATTACHMENT METHOD AND DESIGNATION APPROVED BY THE ENGINEER.

REVISIONS	
NAME	DATE
REVISION 1	12/17/04

ILLINOIS DEPARTMENT OF TRANSPORTATION
F.A.I. 94/90 (DAN RYAN EXPRESSWAY)
31st STREET to I-57
HILLSIDE SHELTER
EQUIPMENT LAYOUT
SCALE: NOT TO SCALE
DATE: October 29, 2004
DRAWN BY: DHI
CHECKED BY: JEZ

Edwards AND Kelcey
ONE NORTH FRANKLIN
CHICAGO, IL 60606
PHONE: (312) 251-3000
FAX: (312) 251-3015
WEB: WWW.EDCORP.COM

12/15/2004 01:51:35 PM