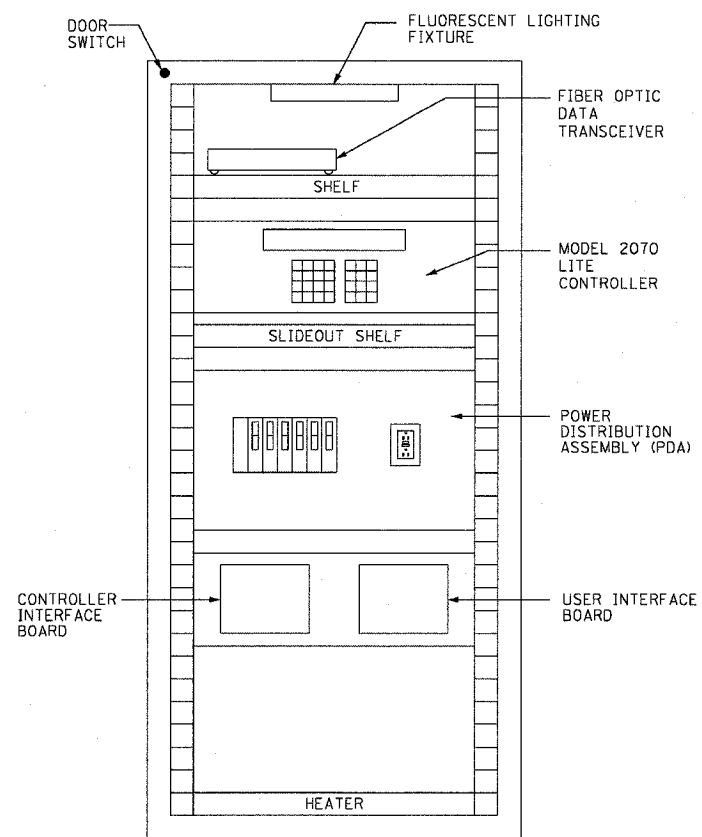


F.A.I. RTE.	SECTION	COUNTY	TOTAL SHEETS	SHEET NO.
90/94	2003-0311	COOK	976	900
STA.	TO STA.			
FED. ROAD DIST. NO. 1 ILLINOIS FED. AID PROJECT				

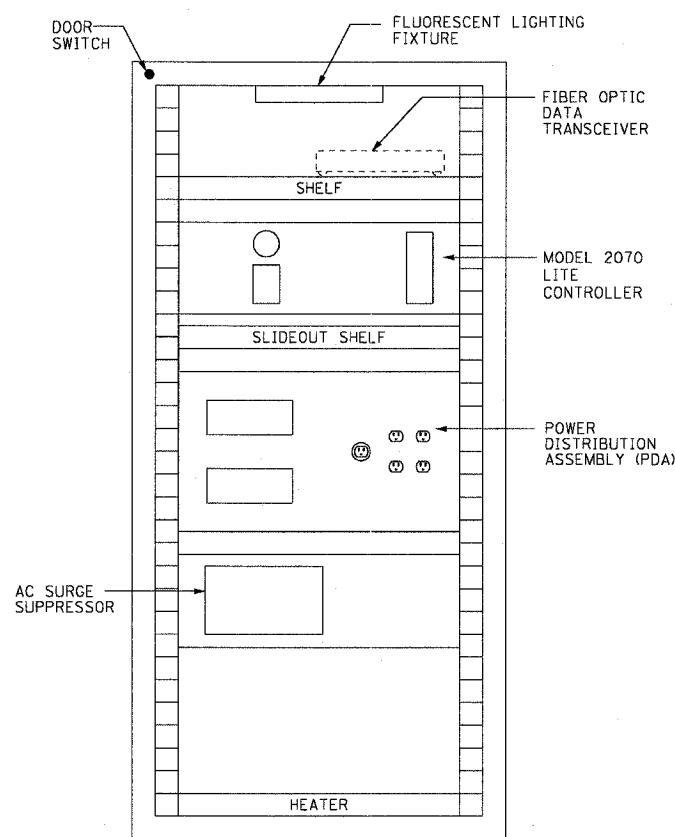
62583

**NOTES:**

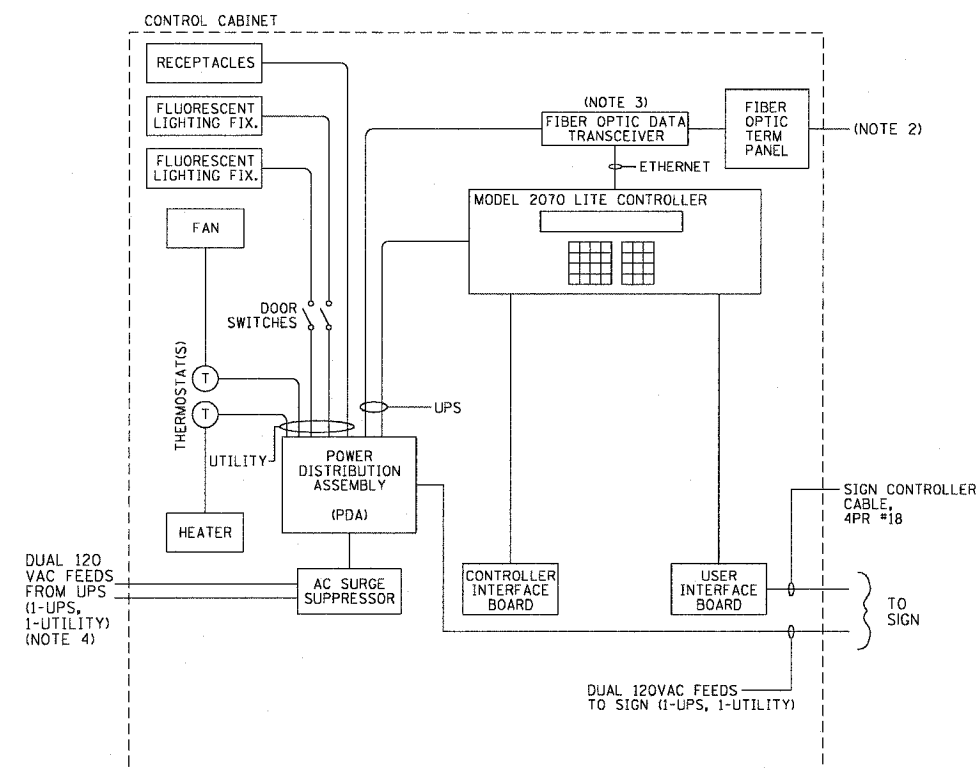
1. SEE DRAWINGS ME-01 AND ME-02 FOR ELECTRICAL SYMBOLS AND ABBREVIATIONS.
2. FIBER OPTIC CABLE AND TERMINATIONS AS SHOWN ON COMM PLANS AND DETAIL SHEETS.
3. A DEDICATED LEASED LINE CONNECTION AND MODEM WILL BE TEMPORARILY USED FOR SIGNS DMS-30, DMS-02, AND DMS-08. TEMPORARY CONNECTIONS WILL REQUIRE FIBER OPTIC DATA TRANSCEIVERS ONCE THE COMMUNICATION NETWORK IS IN PLACE.
4. SEE DRAWING DT-06 FOR CONNECTION TO UPS CABINET.



CONTROL CABINET LAYOUT  
FRONT VIEW (TYPICAL)  
(MODEL 334)



CONTROL CABINET LAYOUT  
BACK VIEW (TYPICAL)  
(MODEL 334)



CONTROL CABINET SINGLE  
LINE DIAGRAM (TYPICAL)  
(MODEL 334)

DT-05

REVISIONS	
NAME	DATE
REVISED	1/21/05

ILLINOIS DEPARTMENT OF TRANSPORTATION  
F.A.I. 90/94 (DAN RYAN EXPRESSWAY)  
31st STREET TO I-57  
  
DYNAMIC MESSAGE SIGN  
CONTROLLER CABINET DETAILS

SCALE: NOT TO SCALE  
DATE: October 29, 2004  
DRAWN BY: BHP  
CHECKED BY: BMW