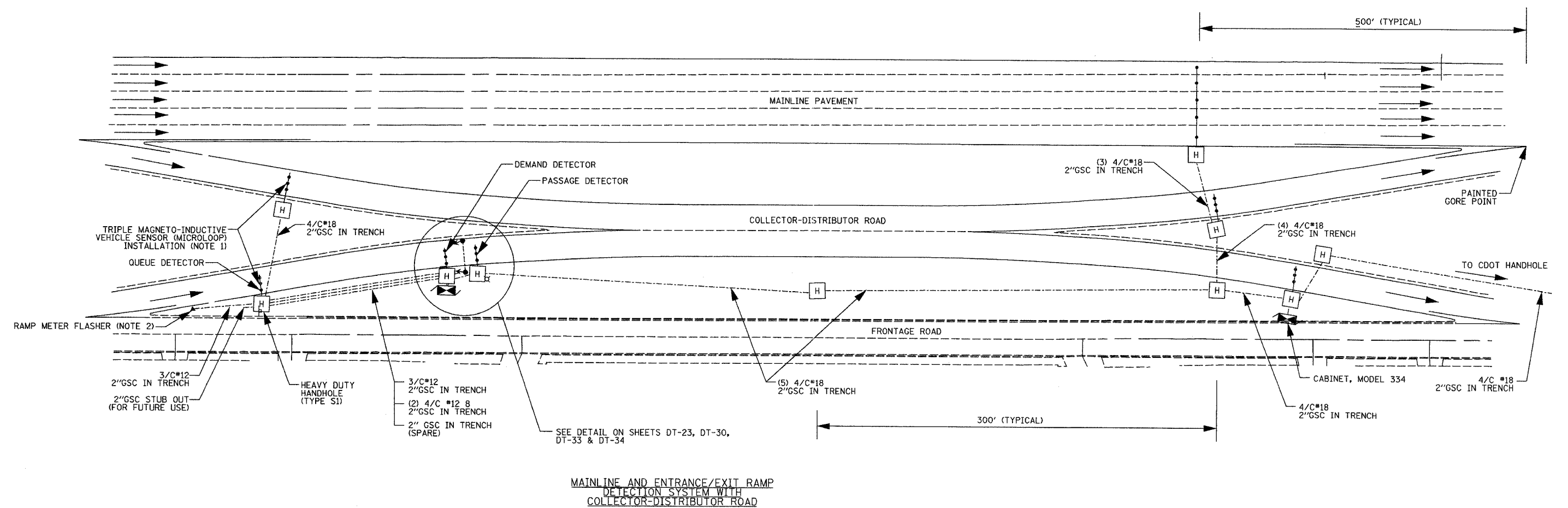


SECTION	COUNTY	TOTAL SHEETS	SHEET NO.
2003-0311	COOK	976	938
STA. TO STA.		FED. ROAD DIST. NO. ILLINOIS FED. AID PROJECT	
		62583	



NOTES:

1. FOR MAGNETO-INDUCTIVE VEHICLE SENSOR (MICROLOOP) INSTALLATION, SEE DETAILS DT-23-27.
2. FOR RAMP METER FLASHER DETAIL, SEE DETAIL DT-35
3. FOR RAMP METER SIGNAL INSTALLATION, SEE DETAILS DT-33 AND DT-34.
4. FOR TYPICAL RAMP METER ENTRANCE AND EXIT RAMP DETECTION SYSTEM INSTALLATION DETAILS WITHOUT A COLLECTOR-DISTRIBUTOR ROAD, SEE DETAIL DT-31.
5. CABINET LOCATION AS SHOWN ON THE PLANS OR AS DIRECTED BY THE ENGINEER. CABINET SHALL BE PLACED TO MAXIMIZE THE VIEW OF THE RAMP METER SIGNAL HEADS AND TO MINIMIZE THE CHANCE OF BEING KNOCKED DOWN.

MAINLINE AND ENTRANCE/EXIT RAMP
DETECTION SYSTEM WITH
COLLECTOR-DISTRIBUTOR ROAD



REVISIONS	
NAME	DATE

ILLINOIS DEPARTMENT OF TRANSPORTATION
F.A.I. 94/90 (DAN RYAN EXPRESSWAY)
31st STREET to I-57
MAINLINE AND ENTRANCE/EXIT RAMP
DETECTION SYSTEM WITH
COLLECTOR-DISTRIBUTOR ROAD
SCALE: NTS
DATE: October 29, 2004
DRAWN BY: NB
CHECKED BY: CC

DT-32

10/15/2004 01:03:56 PM