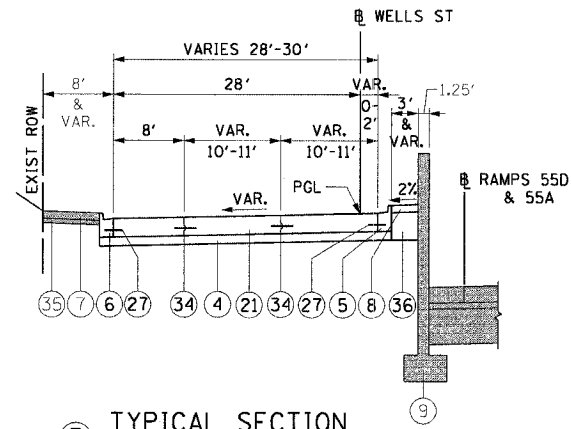


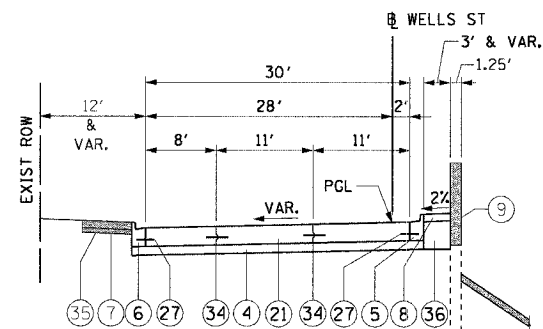
F.A.I. RTE.	SECTION	COUNTY	TOTAL SHEETS	SHEET NO.
90/94	2004-069RS	COOK	61	10
STA.	TO STA.			
FED. ROAD DIST. NO. 1	ILLINOIS	FED. AID PROJECT		

62808



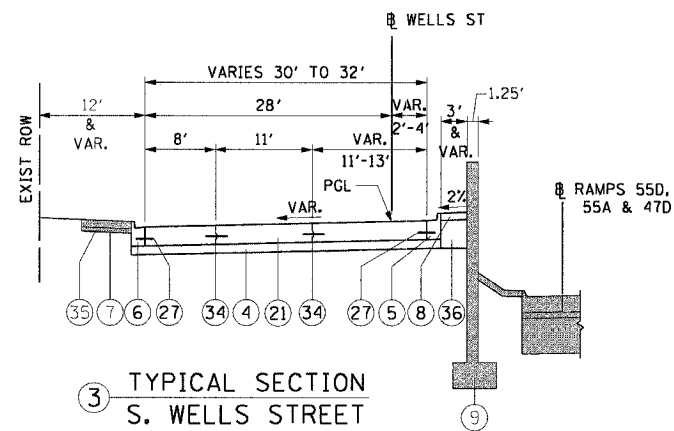
① TYPICAL SECTION  
S. WELLS STREET

STA 574+71.51 TO STA 575+21.51



② TYPICAL SECTION  
S. WELLS STREET

STA 577+50.00 TO STA 583+25.00



③ TYPICAL SECTION  
S. WELLS STREET

30' STA 575+21.51 TO STA 577+50.00  
 30' STA 583+25.00 TO STA 585+75.00  
 30'-32' STA 585+75.00 TO STA 586+25.00  
 32' STA 586+25.00 TO STA 586+62.89

PROPOSED LEGEND:

- ④ SUB-BASE GRANULAR MATERIAL, TYPE B, 8"
- ⑤ COMBINATION CONCRETE CURB AND GUTTER, TYPE B-6.12 (MODIFIED)
- ⑥ COMBINATION CONCRETE CURB AND GUTTER, TYPE B-V.12
- ⑦ PORTLAND CEMENT CONCRETE SIDEWALK, 5" (BY OTHERS)
- ⑧ CONCRETE MEDIAN SURFACE, 5" (MODIFIED)
- ⑨ RETAINING WALL (BY OTHERS)
- ⑪ PORTLAND CEMENT CONCRETE PAVEMENT, 10" (JOINTED)
- ⑫ TIE BARS - 24" LONG, #6 EPOXY COATED BARS AT 24" CENTERS
- ⑬ KEYED LONGITUDINAL CONSTRUCTION JOINT - 24" LONG, #6 EPOXY COATED DEFORMED TIE BARS AT 24" CENTERS
- ⑭ SAND CUSHION, 3" (BY OTHERS)
- ⑮ POROUS GRANULAR EMBANKMENT (SEE DETAIL ON SHEET NO. 41)
- WORK TO BE DONE BY OTHERS

REVISIONS	
NAME	DATE

ILLINOIS DEPARTMENT OF TRANSPORTATION  
 F.A.I. 90/94 (DAN RYAN EXPRESSWAY)  
 53rd ST TO 51st ST (WELLS STREET)

PROPOSED TYPICAL SECTIONS  
 WELLS STREET

SCALE: H:1"=10' V:1"=5'  
 DATE: December 17, 2004  
 DRAWN BY: PHP  
 CHECKED BY: JAL