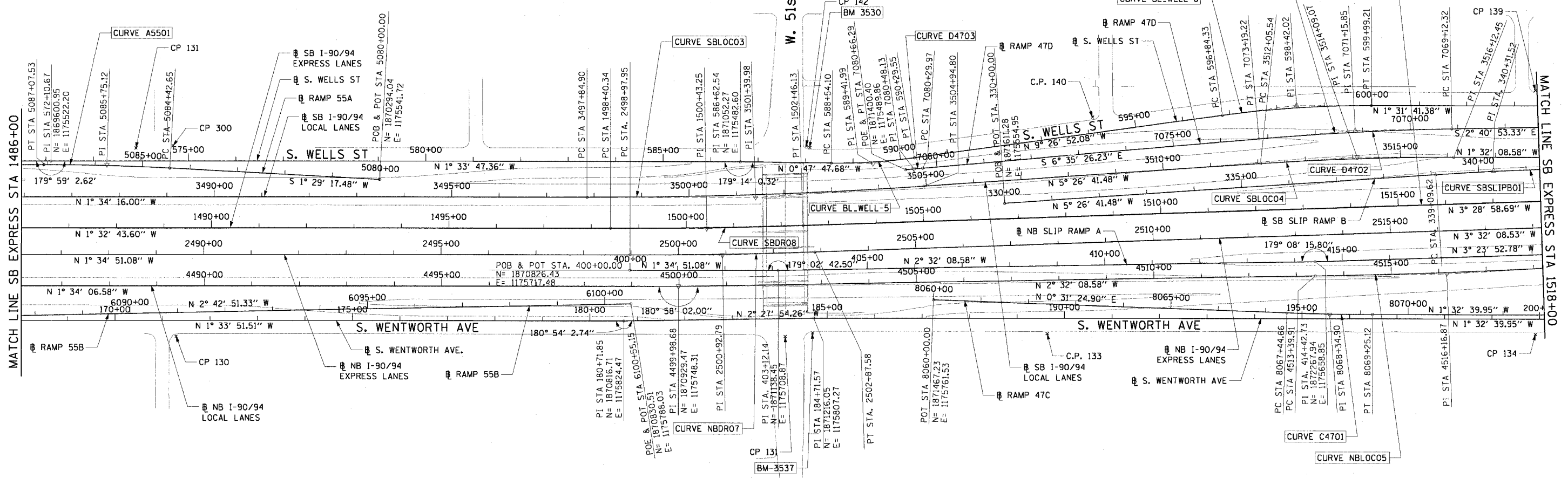


F.A.I. RTE.	SECTION	COUNTY	TOTAL SHEETS	SHEET NO.
90/94	2004-070RS	COOK	60	17
STA.	TO STA.			
FED. ROAD DIST. NO. 1 ILLINOIS FED. AID PROJECT				

62809



<b>CURVE C4701</b> P.I. STA= 8068+34.90 N= 1,872,302.10 E= 1,175,769.16 Δ= 2° 04' 05" D= 1° 08' 45" R= 5000.00' T= 90.24' L= 180.47' E= 0.81' e= N/A T.R.= N/A S.E. RUN= N/A P.C. STA= 8067+44.66 N= 1,872,211.86 E= 1,175,768.33 P.T. STA= 8069+25.12 N= 1,872,392.31 E= 1,175,766.72	<b>CURVE D4702</b> P.I. STA= 7071+15.85 N= 1,872,344.72 E= 1,175,380.81 Δ= 3° 54' 33" D= 0° 57' 38" R= 5964.00' T= 203.53' L= 406.91' E= 3.47' e= N/A T.R.= N/A S.E. RUN= N/A P.C. STA= 7069+12.32 N= 1,872,548.03 E= 1,175,371.29 P.T. STA= 7073+19.22 N= 1,872,142.54 E= 1,175,404.17	<b>CURVE D4703</b> P.I. STA= 7080+48.13 N= 1,871,418.45 E= 1,175,487.83 Δ= 0° 11' 56" D= 0° 32' 51" R= 10464.00' T= 18.16' L= 36.32' E= 0.02' e= N/A T.R.= N/A S.E. RUN= N/A P.C. STA= 7080+29.97 N= 1,871,436.49 E= 1,175,485.75 P.T. STA= 7080+66.29 N= 1,871,400.40 E= 1,175,489.86	<b>CURVE A5501</b> P.I. STA= 5085+75.12 N= 1,869,719.11 E= 1,175,526.79 Δ= 3° 02' 07" D= 1° 08' 45" R= 5000.00' T= 132.48' L= 264.89' E= 1.75' e= N/A T.R.= N/A S.E. RUN= N/A P.C. STA= 5084+42.65 N= 1,869,851.55 E= 1,175,530.23 P.T. STA= 5087+07.53 N= 1,869,586.69 E= 1,175,530.36	<b>CURVE BL.WELL-5</b> P.I. STA= 589+41.99 N= 1,871,331.70 E= 1,175,478.71 Δ= 8° 39' 04" D= 4° 55' 51" R= 1162.00' T= 87.89' L= 175.45' E= 3.32' e= N/A T.R.= N/A S.E. RUN= N/A P.C. STA= 588+54.10 N= 1,871,243.82 E= 1,175,479.94 P.T. STA= 590+29.55 N= 1,871,418.40 E= 1,175,464.29	<b>CURVE BL.WELL-6</b> P.I. STA= 598+42.02 N= 1,872,219.86 E= 1,175,330.92 Δ= 7° 55' 11" D= 2° 30' 55" R= 2278.00' T= 157.69' L= 314.87' E= 5.45' e= N/A T.R.= N/A S.E. RUN= N/A P.C. STA= 596+84.33 N= 1,872,064.31 E= 1,175,356.80 P.T. STA= 599+99.21 N= 1,872,377.49 E= 1,175,326.72	<b>CURVE SBSLIPB01</b> P.I. STA= 340+31.52 N= 1,872,638.15 E= 1,175,457.07 Δ= 2° 00' 00" D= 0° 49' 13" R= 6984.00' T= 121.91' L= 243.79' E= 1.06' e= N/A T.R.= N/A S.E. RUN= N/A P.C. STA= 339+09.62 N= 1,872,516.79 E= 1,175,468.64 P.T. STA= 341+53.40 N= 1,872,759.83 E= 1,175,449.75
--	---	--	---	---	--	--



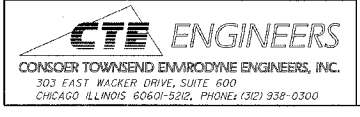
<b>CURVE SBLOC03</b> P.I. STA= 3501+39.98 N= 1,871,086.59 E= 1,175,557.00 Δ= 3° 52' 25" D= 0° 32' 44" R= 10500.00' T= 355.09' L= 709.90' E= 6.00' e= RC T.R.= 96' (96') S.E. RUN= 62' (62') P.C. STA= 3497+84.90 N= 1,870,731.64 E= 1,175,566.73 P.T. STA= 3504+94.80 N= 1,871,440.08 E= 1,175,523.31	<b>CURVE SBLOC04</b> P.I. STA= 3514+09.07 N= 1,872,350.23 E= 1,175,436.55 Δ= 3° 54' 33" D= 0° 57' 39" R= 5964.00' T= 203.53' L= 406.91' E= 3.47' e= 2.82 T.R.= 41' (41') S.E. RUN= 115' (115') P.C. STA= 3512+05.54 N= 1,872,147.61 E= 1,175,455.86 P.T. STA= 3516+12.45 N= 1,872,553.69 E= 1,175,431.10	<b>CURVE SBDR08</b> P.I. STA= 1500+43.25 N= 1,870,985.63 E= 1,175,625.10 Δ= 1° 56' 15" D= 0° 28' 39" R= 12000.00' T= 202.92' L= 405.79' E= 1.72' e= NC T.R.= N/A S.E. RUN= N/A P.C. STA= 1498+40.34 N= 1,870,782.79 E= 1,175,630.57 P.T. STA= 1502+46.13 N= 1,871,188.17 E= 1,175,612.77	<b>CURVE NBDRO7</b> P.I. STA= 2500+92.79 N= 1,871,020.31 E= 1,175,680.12 Δ= 1° 57' 17" D= 0° 30' 06" R= 11420.00' T= 194.84' L= 389.63' E= 1.66' e= NC T.R.= N/A S.E. RUN= N/A P.C. STA= 2498+97.95 N= 1,870,825.55 E= 1,175,685.50 P.T. STA= 2502+87.58 N= 1,871,214.78 E= 1,175,668.10	<b>CURVE NBLOC05</b> P.I. STA= 4516+16.87 N= 1,872,546.08 E= 1,175,676.71 Δ= 2° 26' 28" D= 0° 26' 27" R= 13000.00' T= 276.96' L= 553.84' E= 2.95' e= NC T.R.= N/A S.E. RUN= N/A P.C. STA= 4513+39.91 N= 1,872,269.39 E= 1,175,688.97 P.T. STA= 4518+93.75 N= 1,872,822.00 E= 1,175,652.69
---	--	--	--	---

**NOTES:**  
 1. AVERAGE GRID TO GROUND CONVERSION FACTOR = 1.000010988654360  
 2. FOR BENCH MARK INFORMATION, SEE SHEET 1 OF ALIGNMENT PLAN SHEETS.

REVISIONS	
NAME	DATE

ILLINOIS DEPARTMENT OF TRANSPORTATION  
 F.A.I. 90/94 (DAN RYAN EXPRESSWAY)  
 53rd ST TO 51st ST (WENTWORTH AVENUE)  
**ALIGNMENT PLAN**

SCALE: 1"=100'  
 DATE: DECEMBER 17, 2004  
 DRAWN BY: NJH/AMM  
 CHECKED BY: JAL/MS



12/09/2004 10:45:12 AM