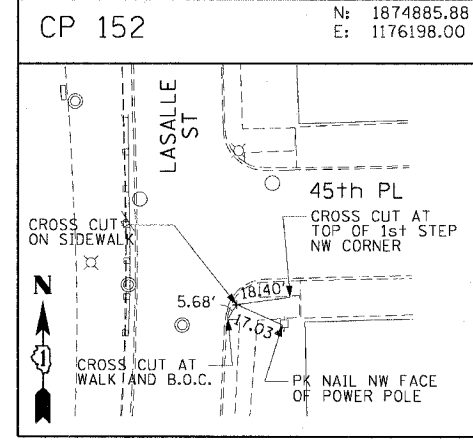
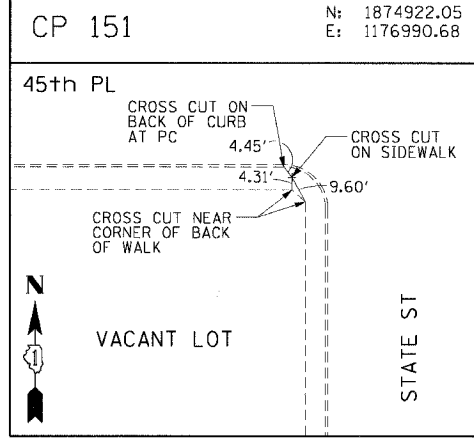
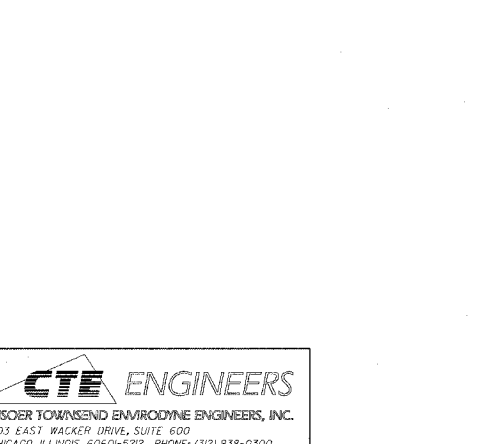
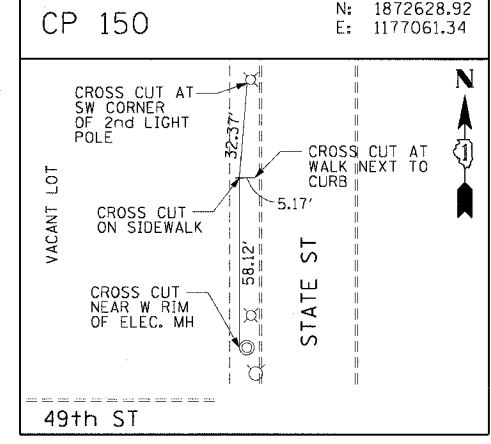
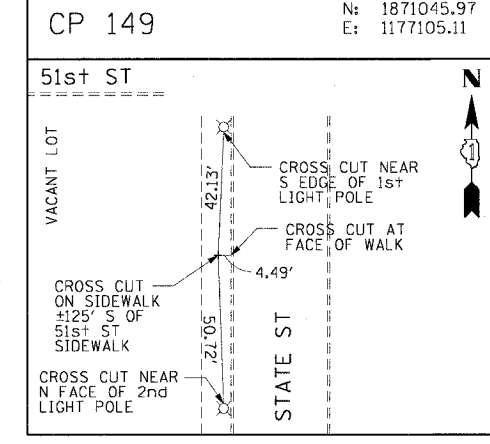
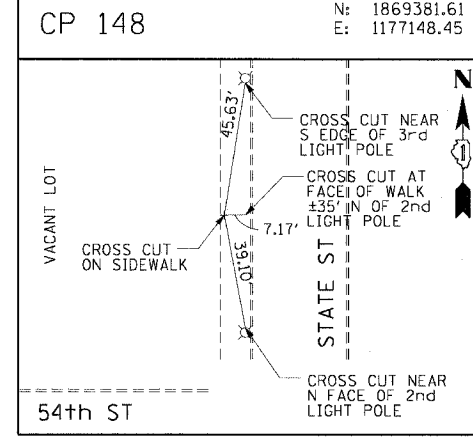
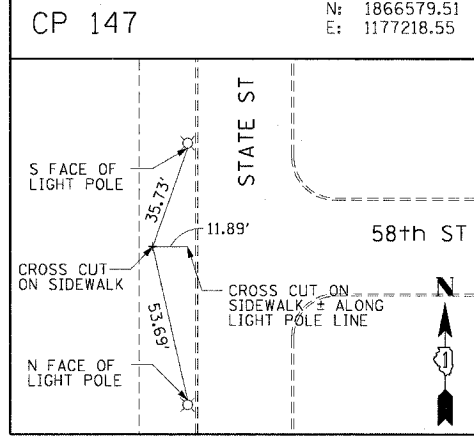
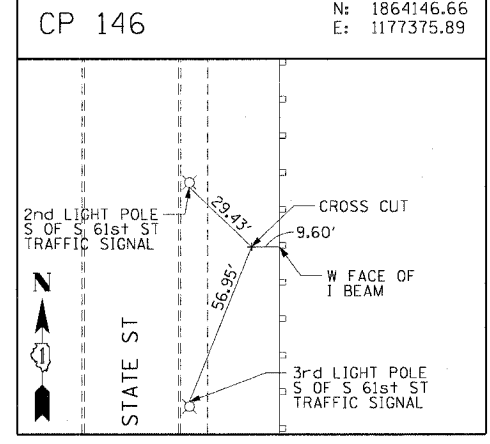
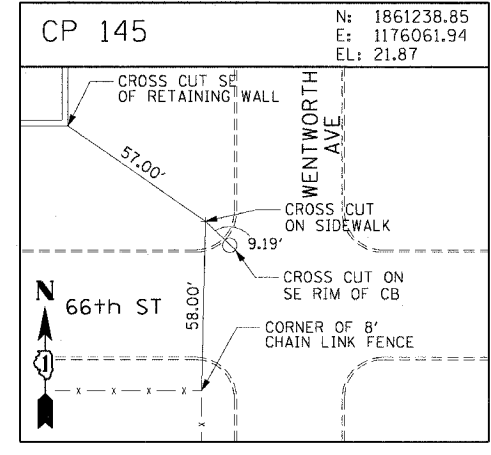
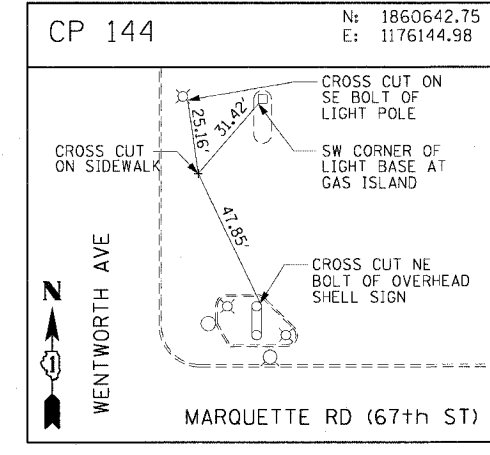
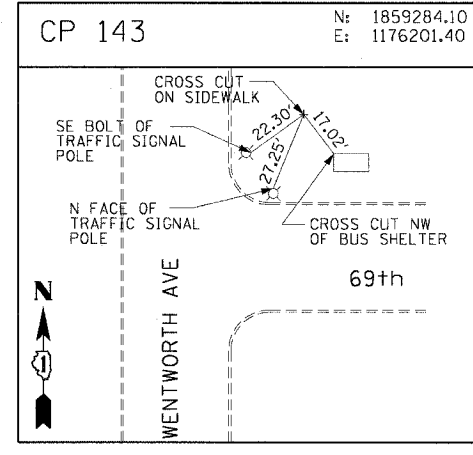
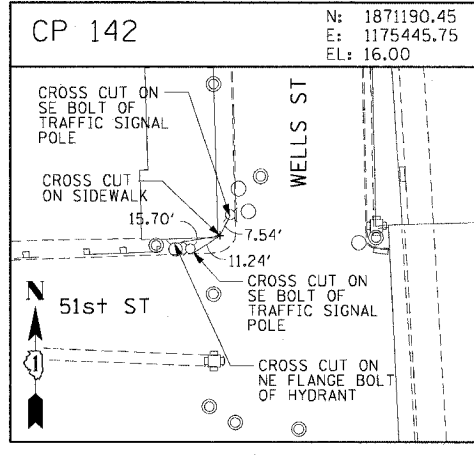
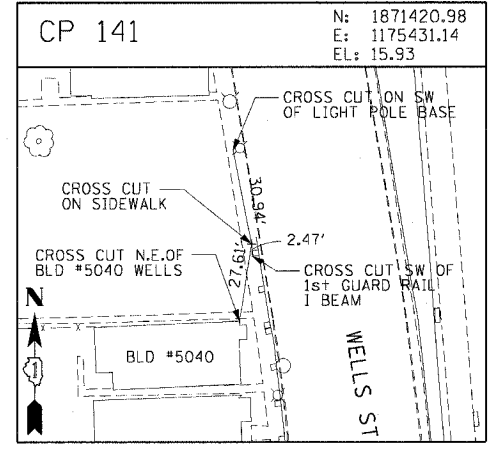
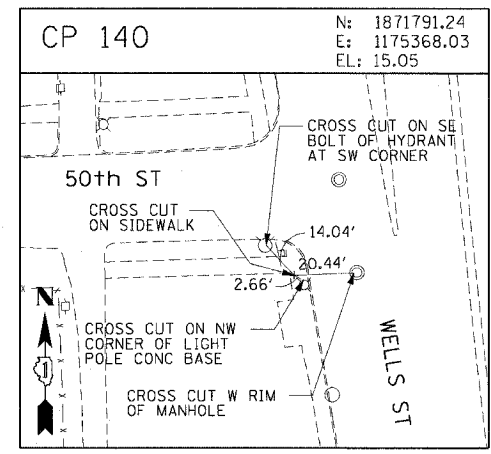
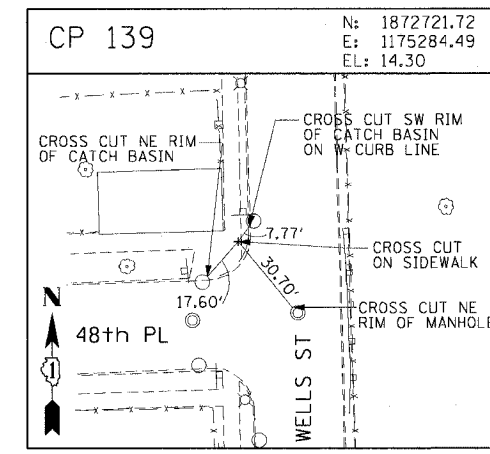
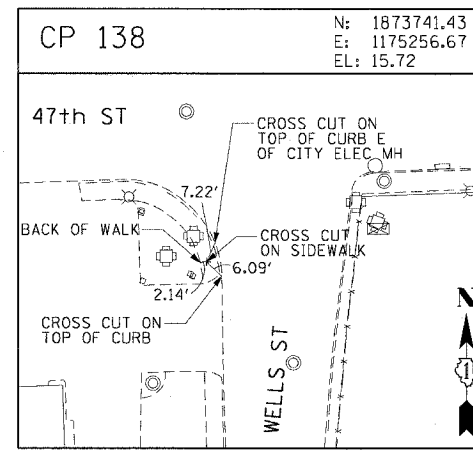
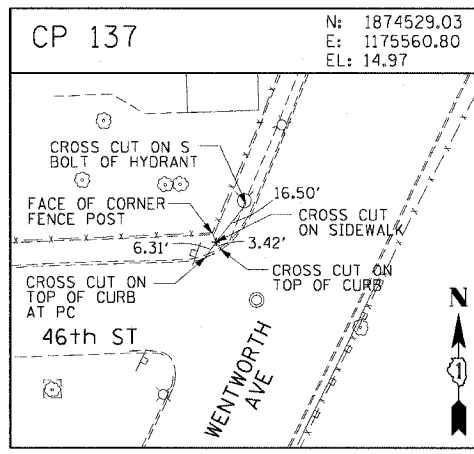
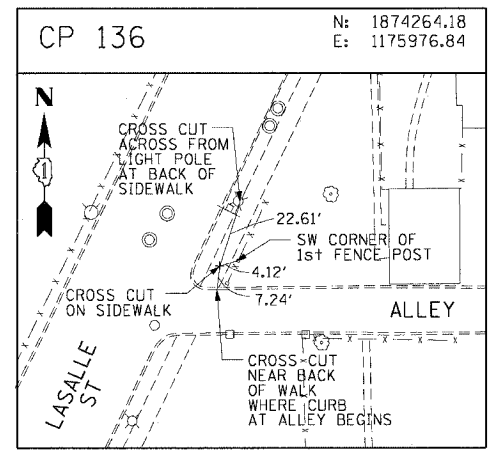


F.A.I. R/E:	SECTION	COUNTY	TOTAL SHEETS	SHEET NO.
90/94	2004-070RS	COOK	60	21
STA.	TO STA.			
FED. ROAD DIST. NO. 1 ILLINOIS FED. AID PROJECT				
62809				



CTE ENGINEERS
 CONSOER TOWNSEND ENVIRONMENTAL ENGINEERS, INC.
 303 EAST WACKER DRIVE, SUITE 600
 CHICAGO, ILLINOIS 60601-5022, PHONE: (312) 938-0300

REVISIONS	
NAME	DATE

ILLINOIS DEPARTMENT OF TRANSPORTATION
 F.A.I. 90/94 (DAN RYAN EXPRESSWAY)
 53rd ST TO 51st ST (WENTWORTH AVENUE)
 SURVEY TIES AND CONTROL POINTS

SCALE: 1"=30'
 DATE: DECEMBER 17, 2004

DRAWN BY: MRK
 CHECKED BY: JAL

12/09/2004 10:55:19 AM