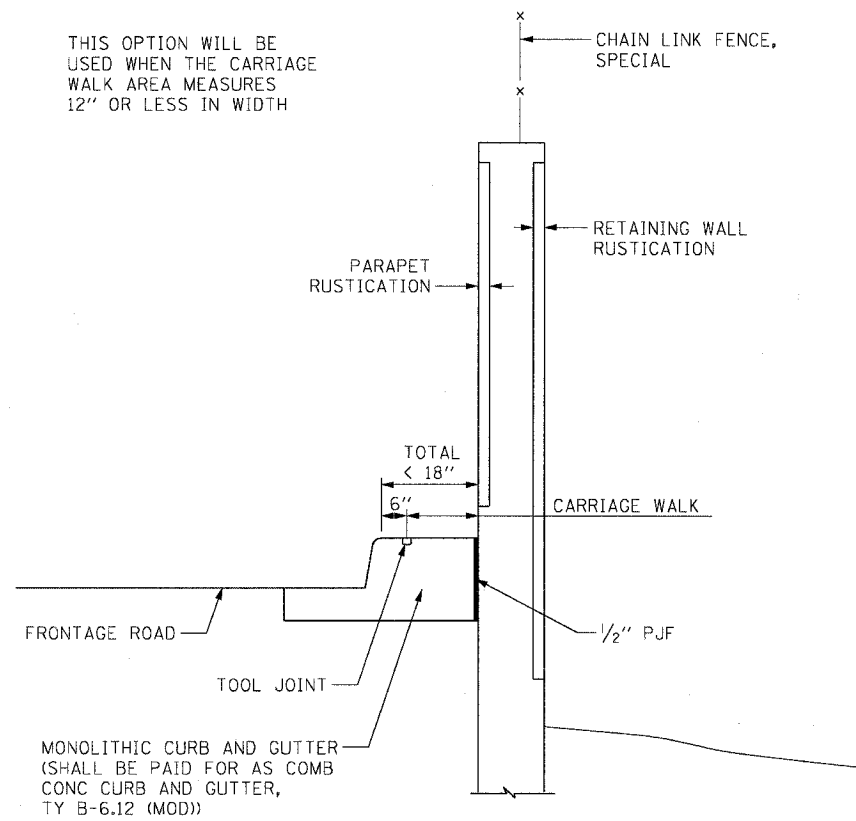
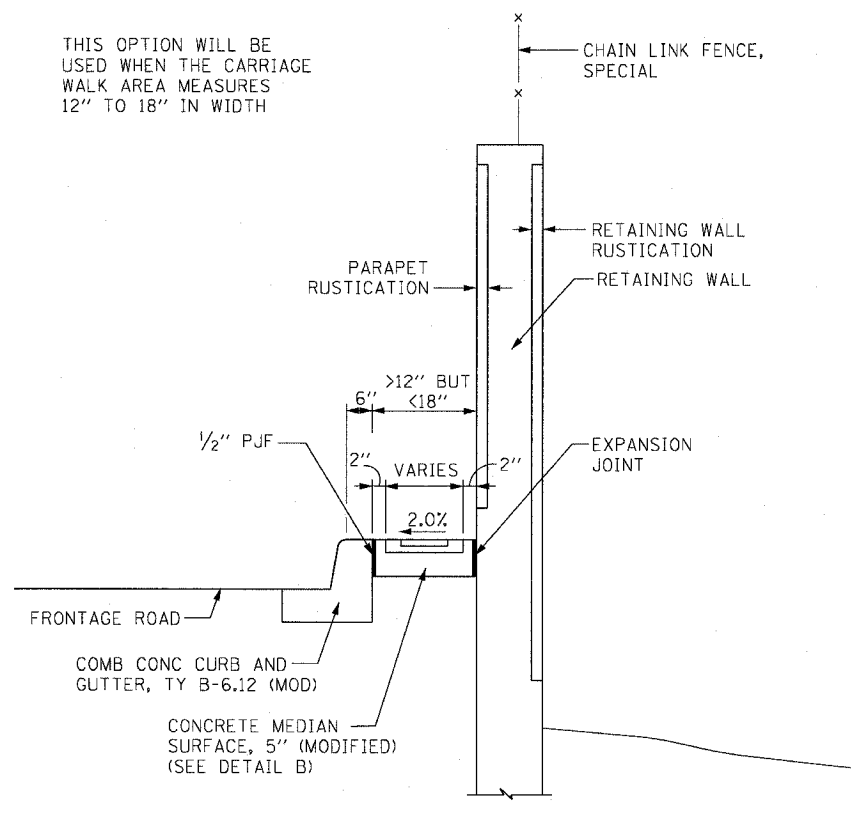


F.A.I. RTE.	SECTION	COUNTY	TOTAL SHEETS	SHEET NO.
90/94	2004-070RS	COOK	60	41
STA.	TO STA.			
FED. ROAD DIST. NO. 1		ILLINOIS	FED. AID PROJECT	

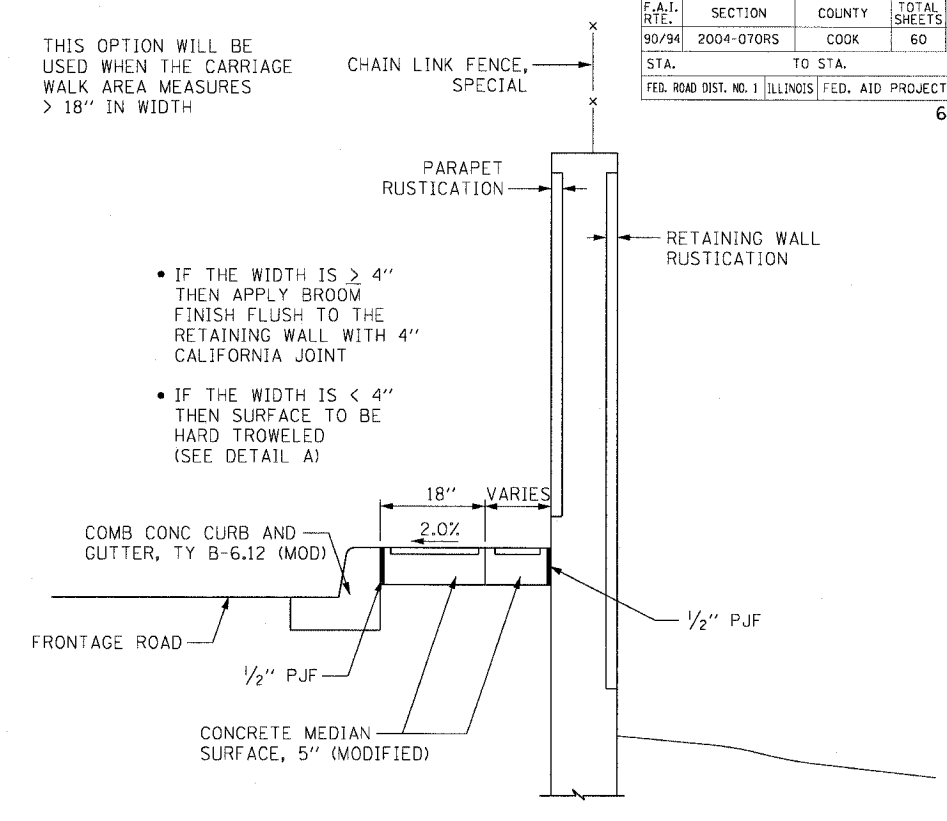
62809



CARRIAGE WALK
AREA < 12" WIDE

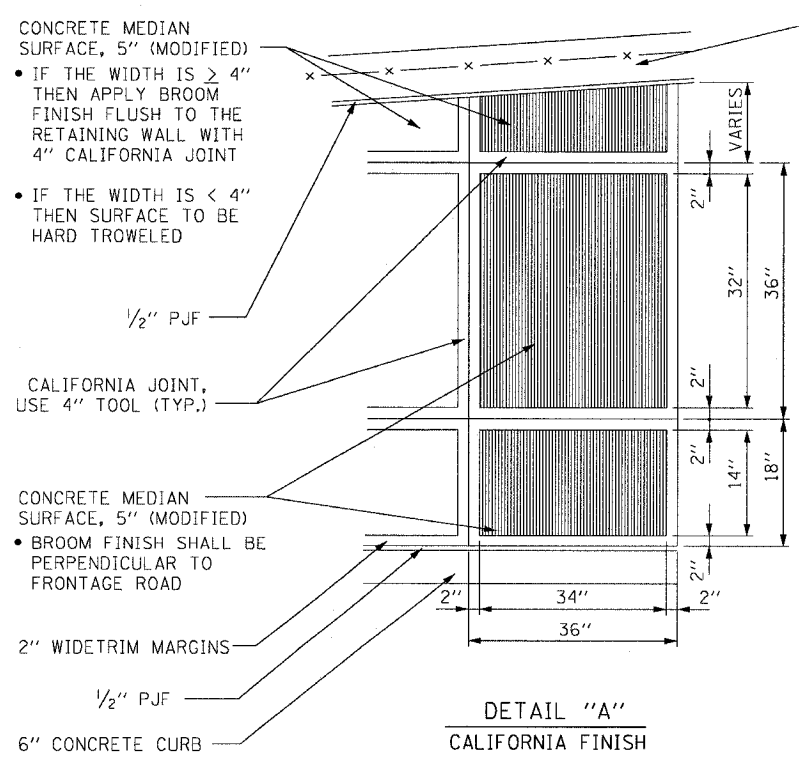


CARRIAGE WALK
AREA 12" TO 18" WIDE

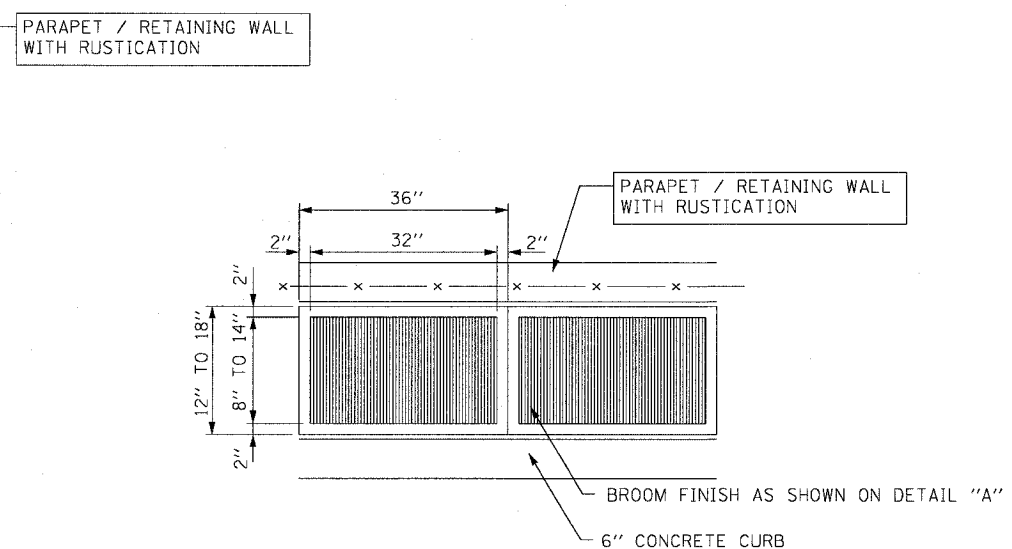


CARRIAGE WALK
AREA > 18" WIDE

- IF THE WIDTH IS $\geq 4"$ THEN APPLY BROOM FINISH FLUSH TO THE RETAINING WALL WITH 4" CALIFORNIA JOINT
- IF THE WIDTH IS $< 4"$ THEN SURFACE TO BE HARD TROWELED (SEE DETAIL A)



DETAIL "A"
CALIFORNIA FINISH



DETAIL "B"
CALIFORNIA FINISH

CTE ENGINEERS
CONSOER TOWNSEND ENVIRONMENTAL ENGINEERS, INC.
303 EAST WACKER DRIVE, SUITE 600
CHICAGO, ILLINOIS 60601-5322, PHONE: (312) 938-0300

REVISIONS	
NAME	DATE

ILLINOIS DEPARTMENT OF TRANSPORTATION
F.A.I. 90/94 (DAN RYAN EXPRESSWAY)
53rd ST TO 51st ST (WENTWORTH AVENUE)
ROADWAY DETAILS
CONCRETE MEDIAN SURFACE, 5" (MODIFIED)
CARRIAGE WALK AND CALIFORNIA FINISH DETAIL
SCALE: NONE
DATE: DECEMBER 17, 2004
DRAWN BY: PHP
CHECKED BY: NJH

12/09/2004 10:45:41 AM