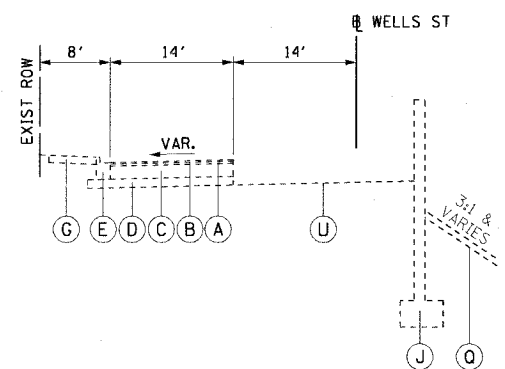
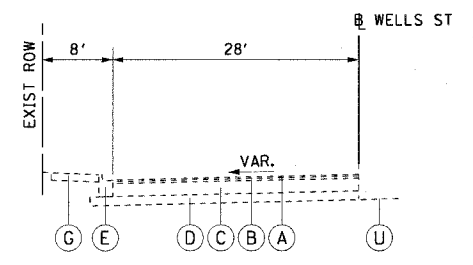


|                       |            |                  |              |           |
|-----------------------|------------|------------------|--------------|-----------|
| F.A.I. RTE.           | SECTION    | COUNTY           | TOTAL SHEETS | SHEET NO. |
| 90/94                 | 2004-07IRS | COOK             | 54           | 9         |
| STA.                  | TO STA.    |                  |              |           |
| FED. ROAD DIST. NO. 1 | ILLINOIS   | FED. AID PROJECT | 62810        |           |



① EX TYPICAL SECTION  
S. WELLS STREET

STA 592+93.53 TO STA 595+50.00



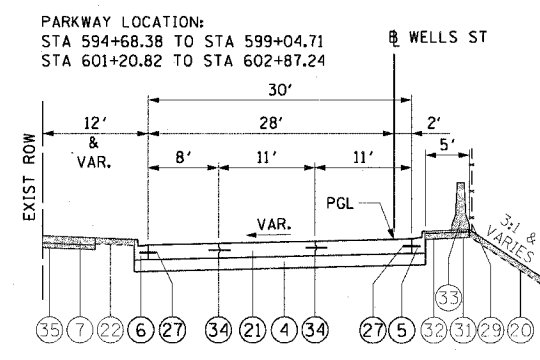
② EX TYPICAL SECTION  
S. WELLS STREET

STA 595+50.00 TO STA 602+87.24

**EXISTING LEGEND:**

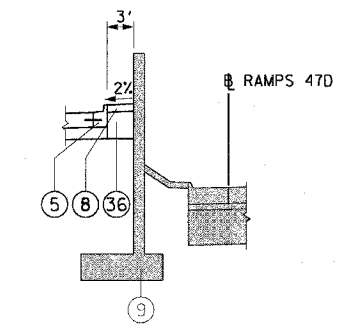
- Ⓐ BIT. CONC. SURFACE COURSE, 1"
- Ⓑ BIT. CONC. BINDER COURSE, 1 1/2"
- Ⓒ P.C.C. BASE COURSE, 9"
- Ⓓ SUB-BASE GRANULAR MATERIAL, TYPE A, 6"
- Ⓔ COMB. CONC. CURB AND GUTTER, TYPE 3
- Ⓖ P.C.C. SIDEWALK, 5"
- Ⓙ RETAINING WALL INSTALLED IN CONTRACT 62586
- Ⓞ GRASS AREA
- Ⓤ BACKFILL PLACED IN CONTRACT 62586

NOTE:  
THE DEPTHS OF MATERIALS SHOWN WERE  
TAKEN FROM AS-BUILT PLANS.



PR TYPICAL SECTION  
S. WELLS STREET

STA 595+44.91 TO STA 602+87.24



RETAINING WALL DETAIL  
STA 592+93.53 TO STA 595+44.91

WORK TO BE DONE BY OTHERS

**PROPOSED LEGEND:**

- Ⓓ SUB-BASE GRANULAR MATERIAL, TYPE B, 8"
- Ⓔ COMBINATION CONCRETE CURB AND GUTTER, TYPE B-6.12 (MODIFIED)
- Ⓕ COMBINATION CONCRETE CURB AND GUTTER, TYPE B-V.12
- Ⓗ PORTLAND CEMENT CONCRETE SIDEWALK, 5" (BY OTHERS)
- Ⓒ CONCRETE MEDIAN SURFACE, 5" (MODIFIED)
- Ⓙ RETAINING WALL (BY OTHERS)
- Ⓐ SEEDING, CLASS 2A / TOPSOIL FURNISH AND PLACE, 4" (BY OTHERS)
- Ⓓ PORTLAND CEMENT CONCRETE PAVEMENT, 10" (JOINTED)
- Ⓐ SODDING, SALT TOLERANT / TOPSOIL FURNISH AND PLACE, 4" (BY OTHERS)
- Ⓓ TIE BARS - 24" LONG, #6 EPOXY COATED BARS AT 24" CENTERS
- Ⓐ CHAIN LINK FENCE, 4' (BY OTHERS)
- Ⓐ AGGREGATE BASE COURSE, TYPE B, 4"
- Ⓐ BITUMINOUS SHOULDERS, 1 1/2"
- Ⓐ FURNISH TEMPORARY CONCRETE BARRIER (BY OTHERS)
- Ⓓ KEYED LONGITUDINAL CONSTRUCTION JOINT - 24" LONG, #6 EPOXY COATED DEFORMED TIE BARS AT 24" CENTERS
- Ⓐ SAND CUSHION, 3" (BY OTHERS)
- Ⓐ POROUS GRANULAR EMBANKMENT (SEE DETAIL ON SHEET NO. 37)



| REVISIONS |      |
|-----------|------|
| NAME      | DATE |
|           |      |
|           |      |
|           |      |
|           |      |
|           |      |
|           |      |
|           |      |
|           |      |
|           |      |
|           |      |

ILLINOIS DEPARTMENT OF TRANSPORTATION  
F.A.I. 90/94 (DAN RYAN EXPRESSWAY)  
51st ST TO 48th PL (WELLS STREET)

EXISTING TYPICAL SECTIONS  
PROPOSED TYPICAL SECTIONS  
WELLS STREET

SCALE: H:1"=10' V:1"=5'  
DATE: December 17, 2004

DRAWN BY: NJH  
CHECKED BY: JAL

12/15/2004 11:01:24 AM