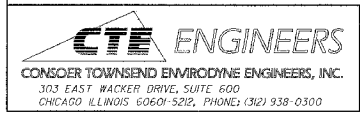
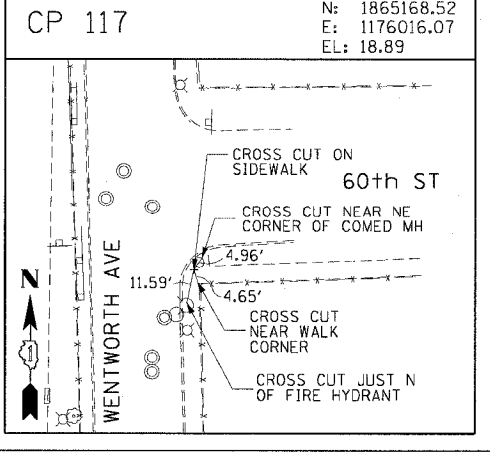
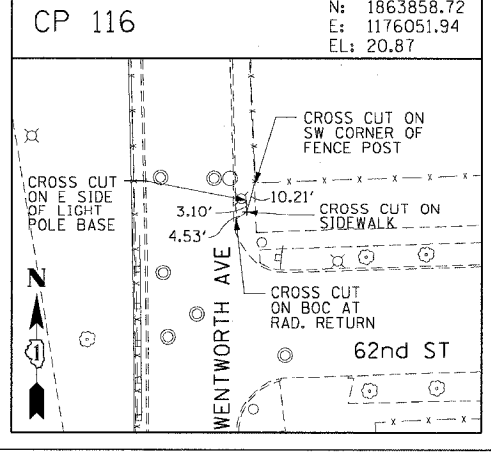
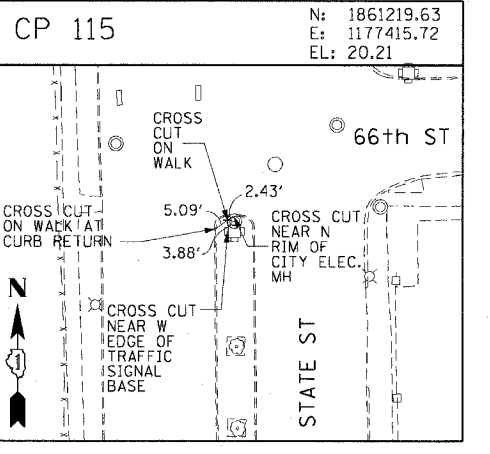
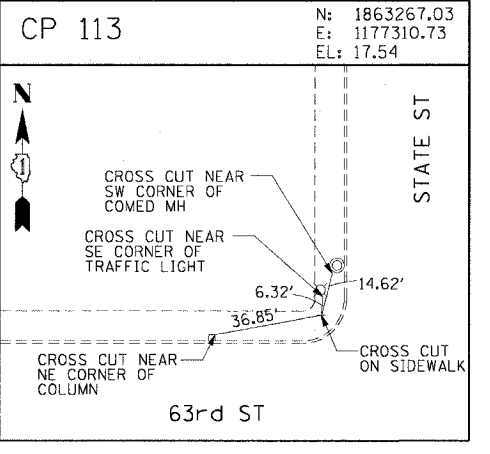
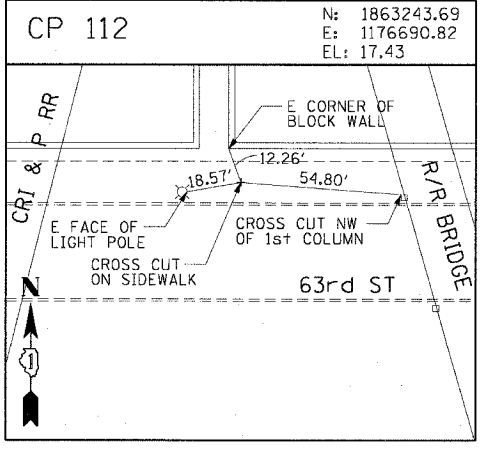
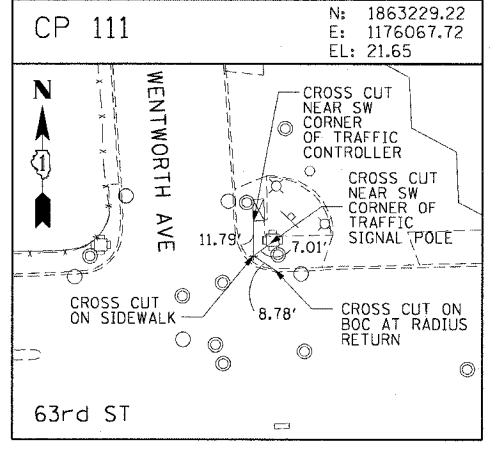
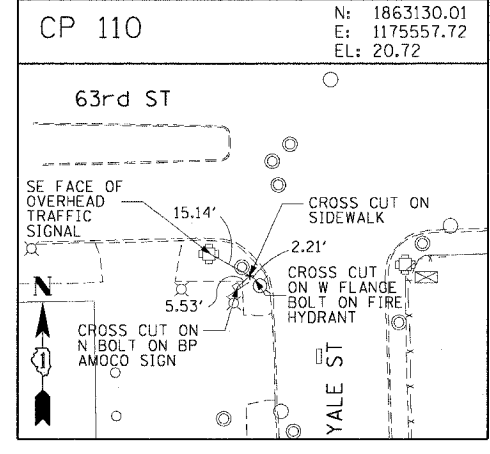
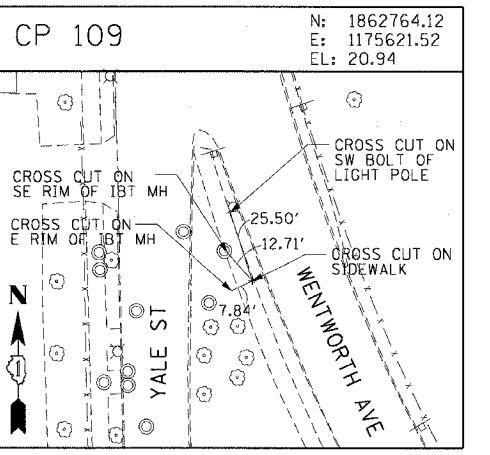
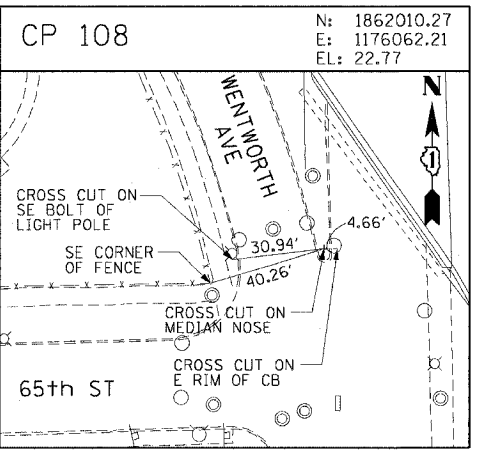
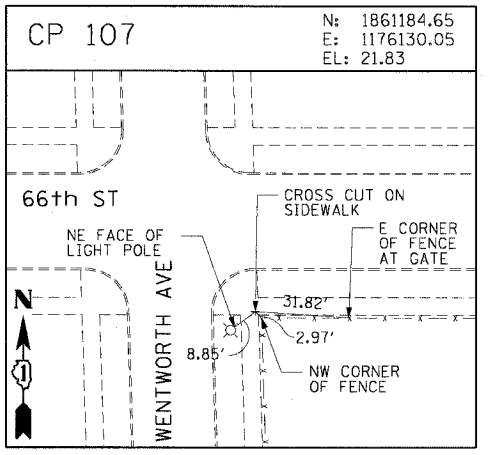
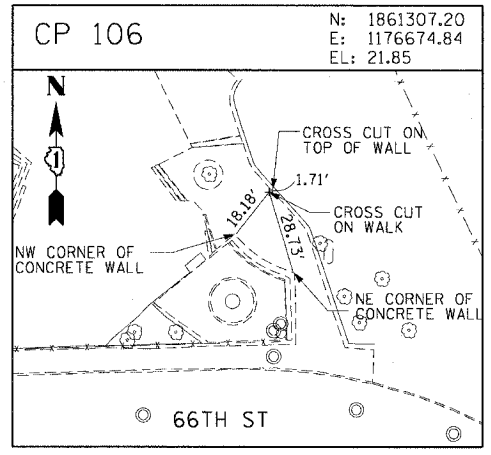
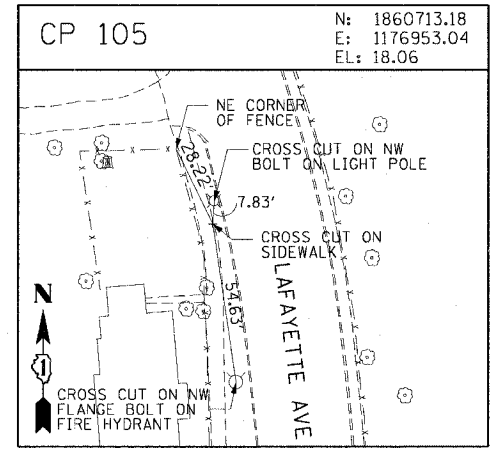
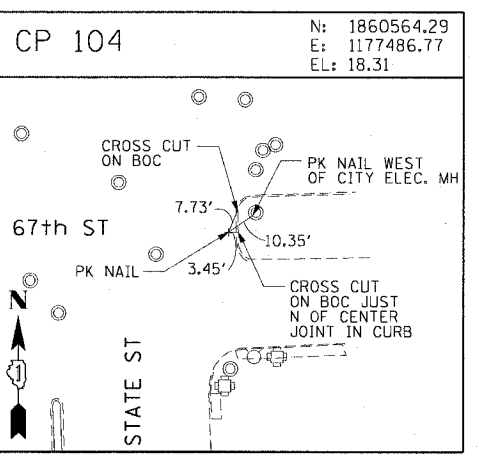
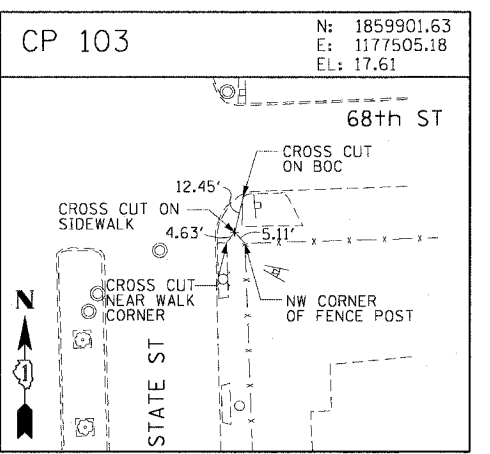
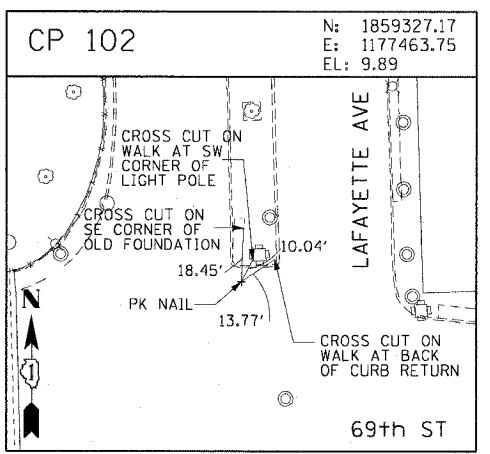
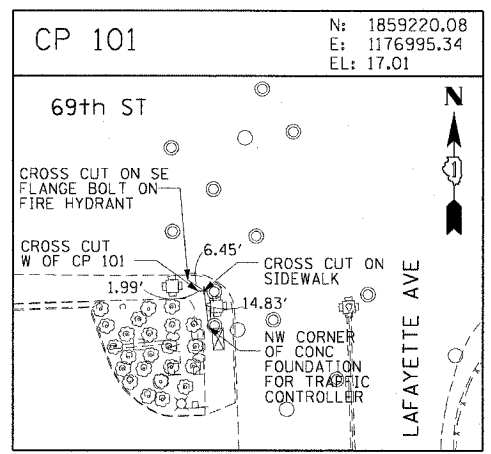
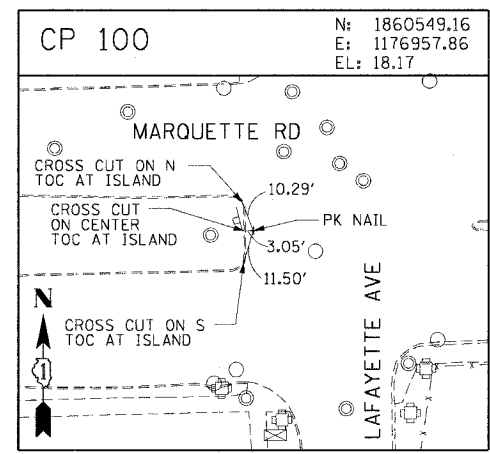


F.A.I. RTE.	SECTION	COUNTY	TOTAL SHEETS	SHEET NO.
90/94	2004-07IRS	COOK	54	18
STA.		TO STA.		
FED. ROAD DIST. NO. 1		ILLINOIS FED. AID PROJECT		62810



REVISIONS	
NAME	DATE

ILLINOIS DEPARTMENT OF TRANSPORTATION
F.A.I. 90/94 (DAN RYAN EXPRESSWAY)
51st ST TO 48th PL (WELLS STREET)

SURVEY TIES AND CONTROL POINTS

SCALE: 1"=30'
DATE: December 17, 2004

DRAWN BY: MRK
CHECKED BY: JAL

m:\p\2006\62810\1174-ctrl-9\add_ctrl_9\616\align\m\02516102a.dwg 9/25/2004