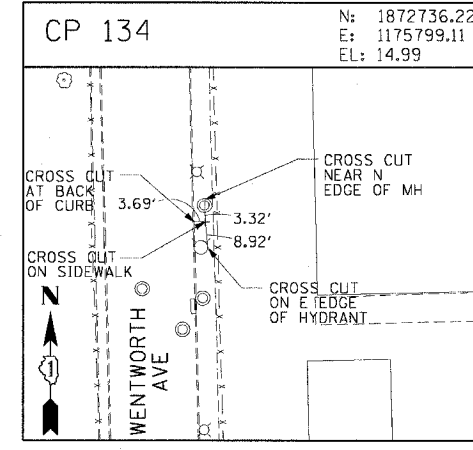
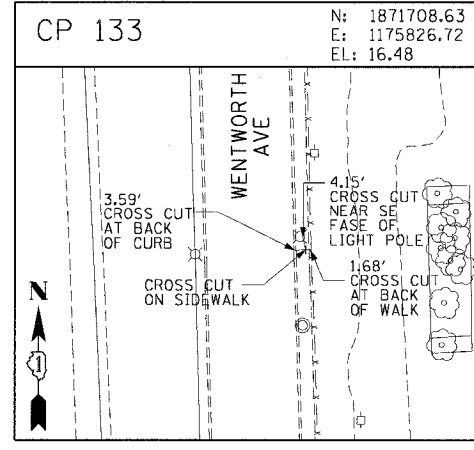
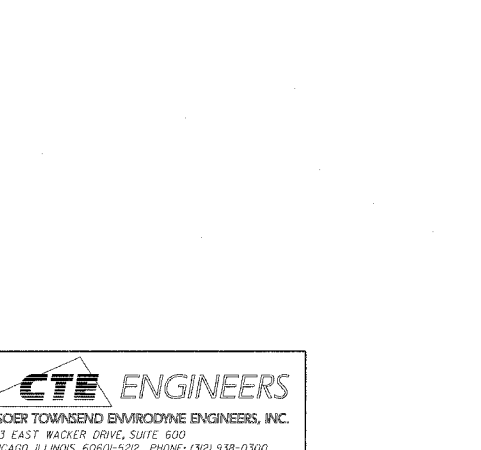
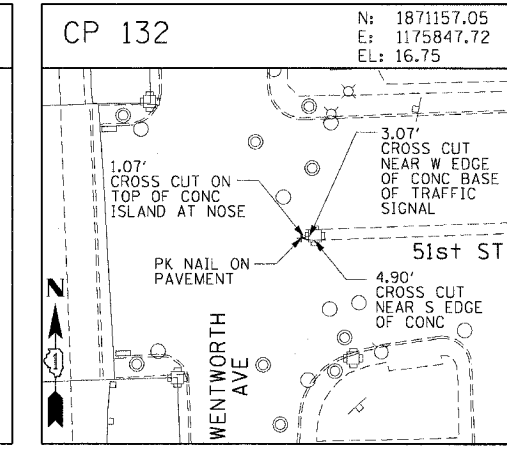
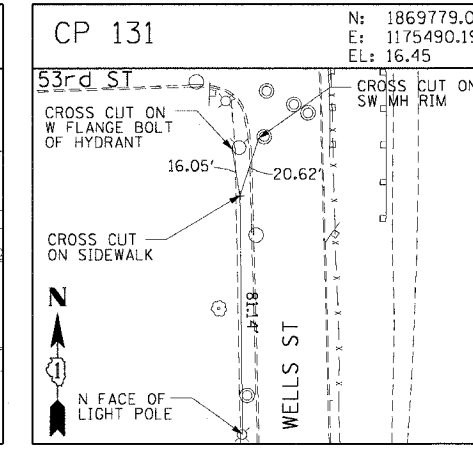
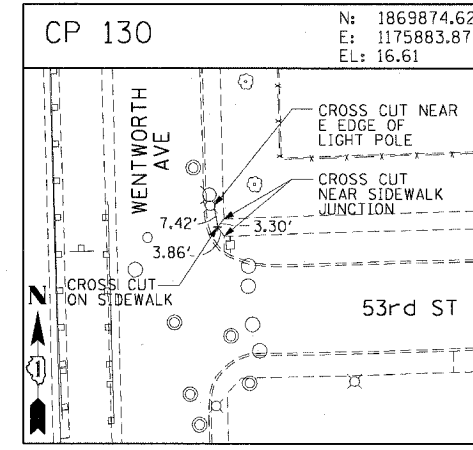
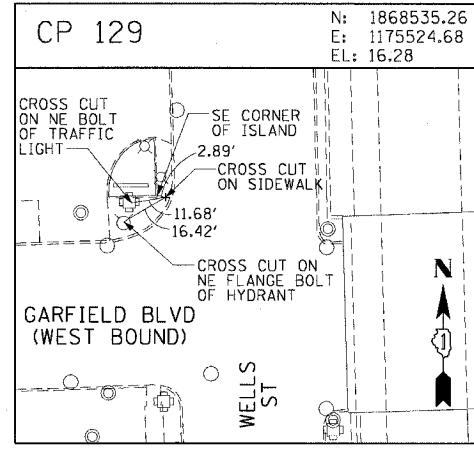
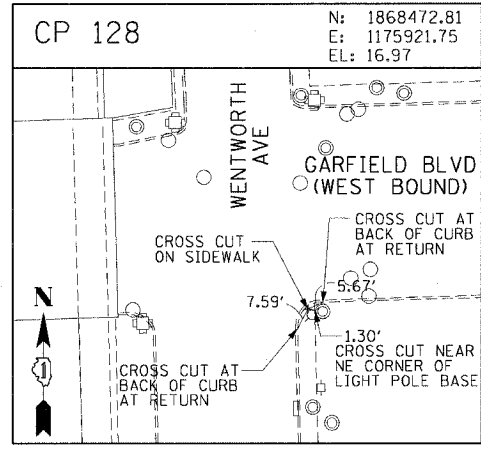
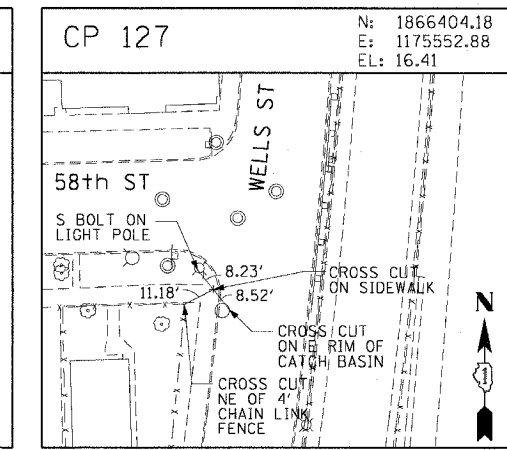
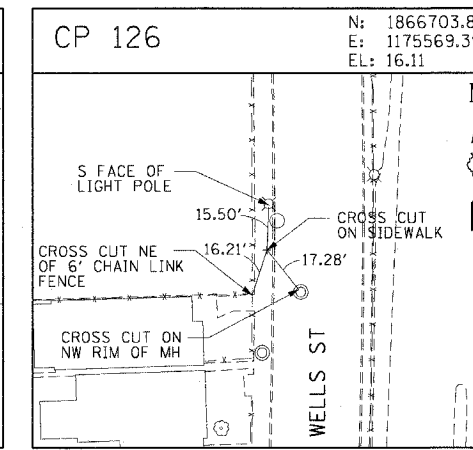
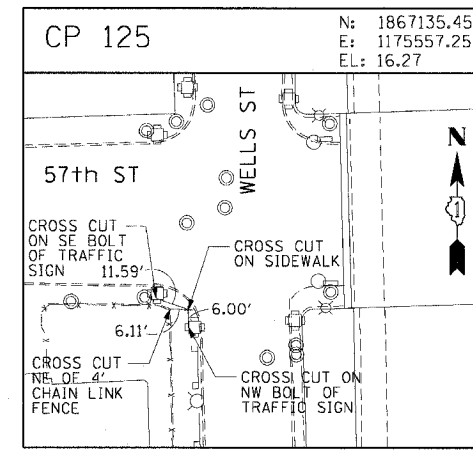
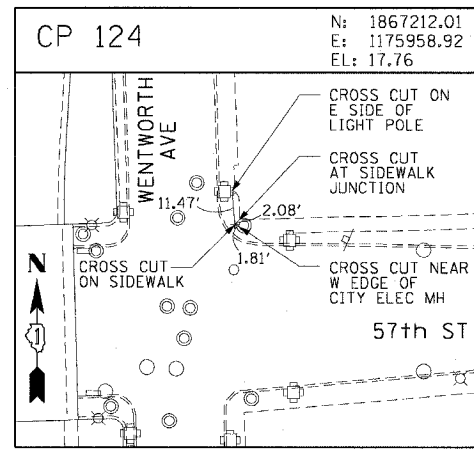
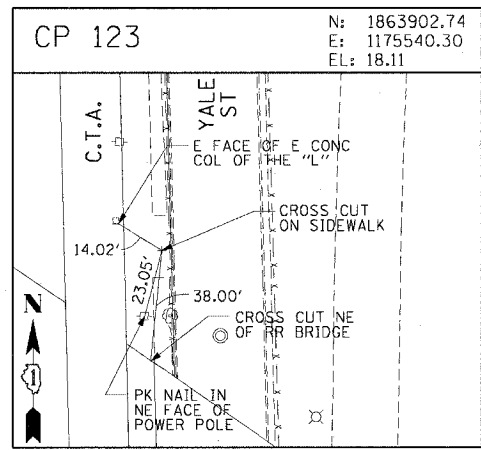
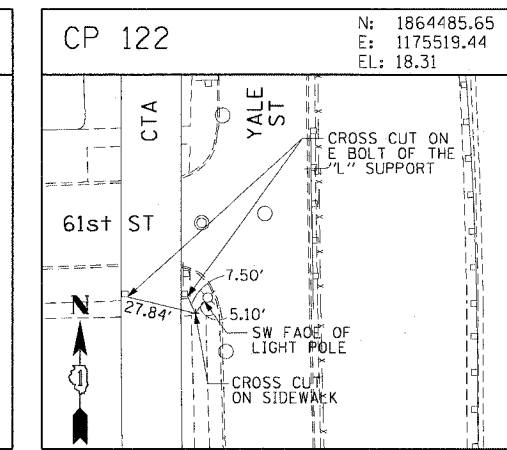
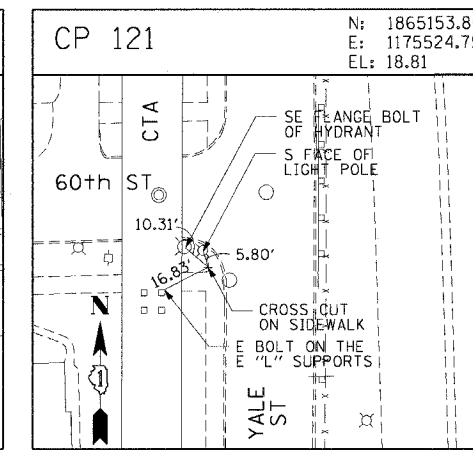
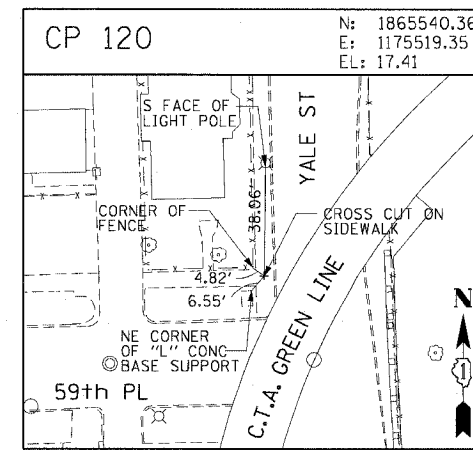
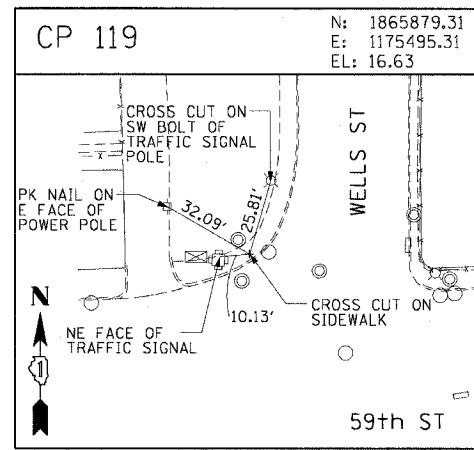
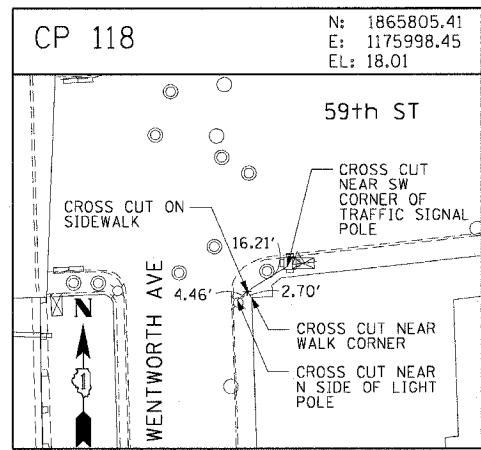


F.A.I. RTE.	SECTION	COUNTY	TOTAL SHEETS	SHEET NO.
90/94	2004-071RS	COOK	54	19
STA.		TO STA.		
FED. ROAD DIST. NO. 1 ILLINOIS FED. AID PROJECT				
62810				



REVISIONS	
NAME	DATE

ILLINOIS DEPARTMENT OF TRANSPORTATION
 F.A.I. 90/94 (DAN RYAN EXPRESSWAY)
 51st ST TO 48th PL (WELLS STREET)
SURVEY TIES AND CONTROL POINTS

SCALE: 1"=30'
 DATE: December 17, 2004

DRAWN BY: MRK
 CHECKED BY: JAL



m:\p\04068\civ\14-cm\19\add_cml\0616\st\align\m\09\06\02\2004