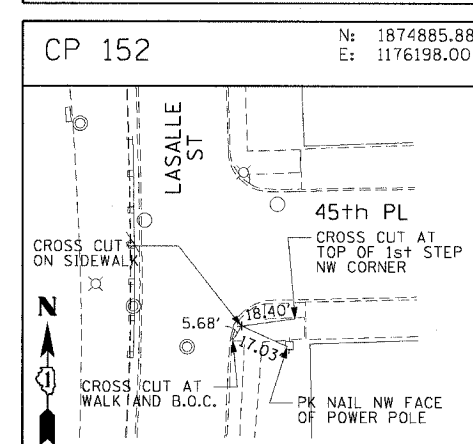
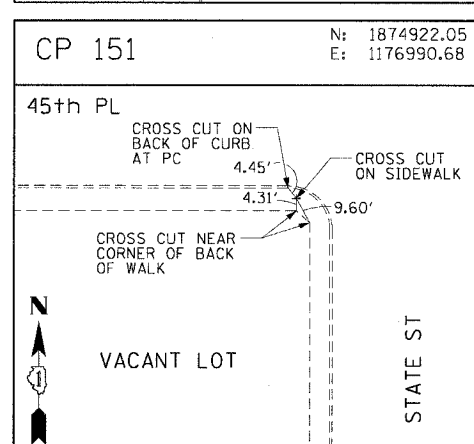
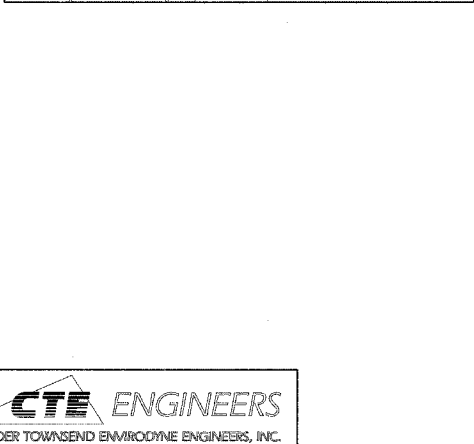
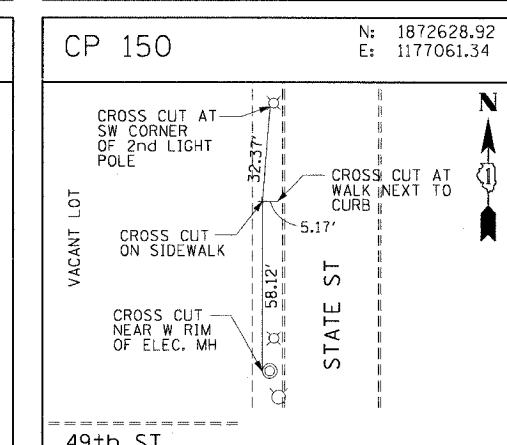
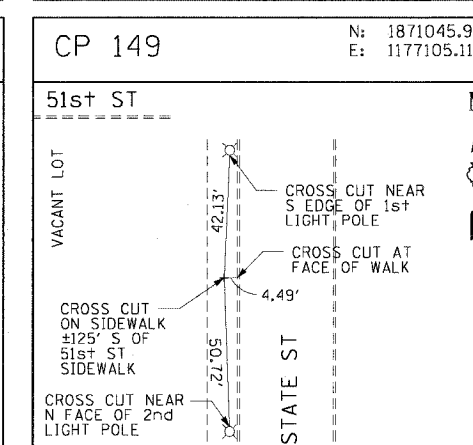
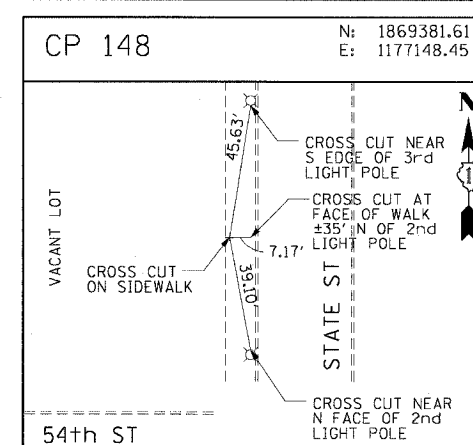
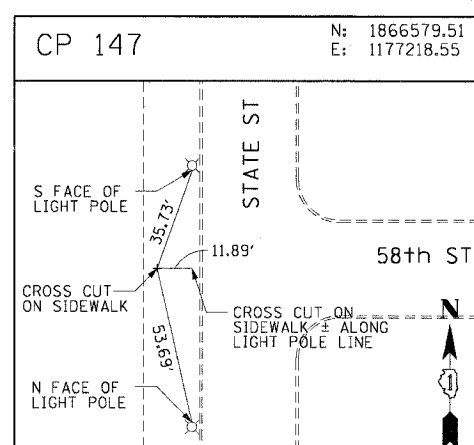
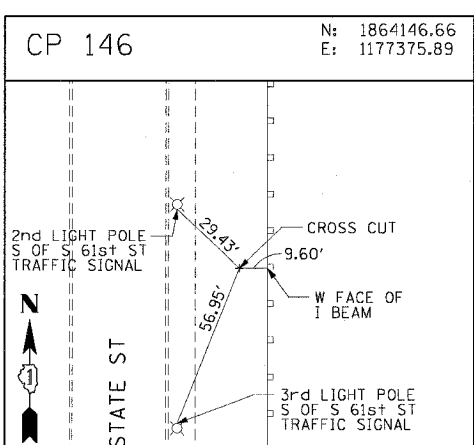
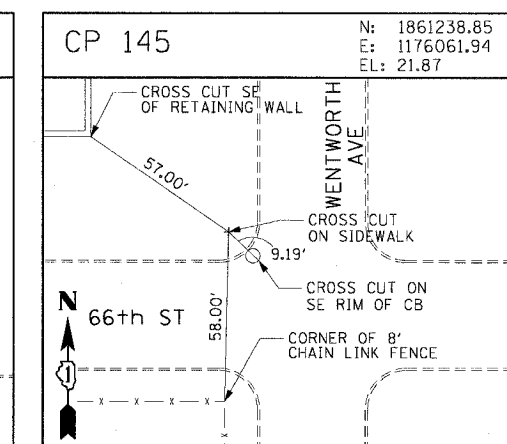
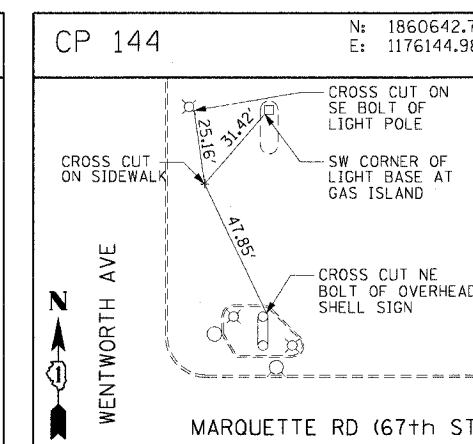
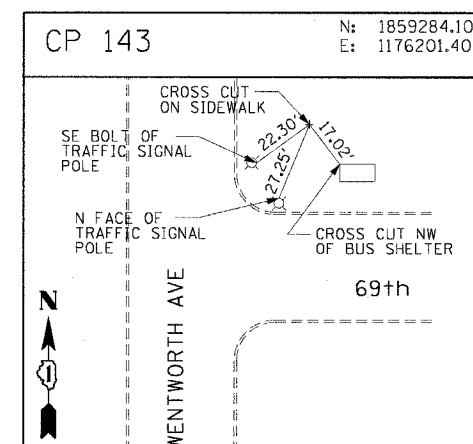
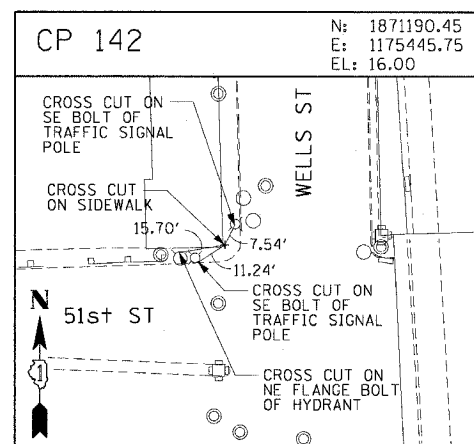
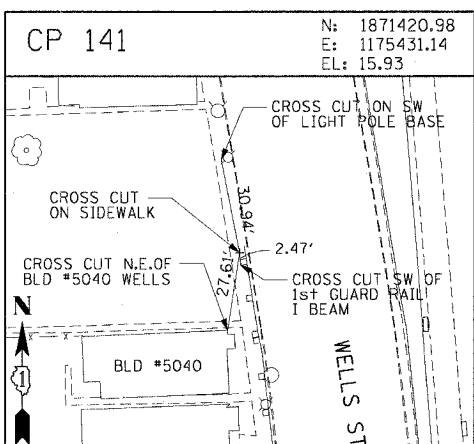
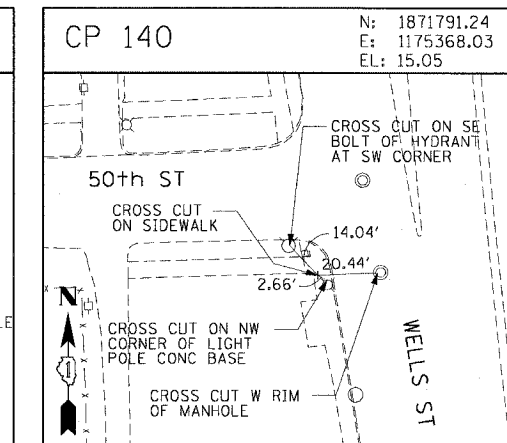
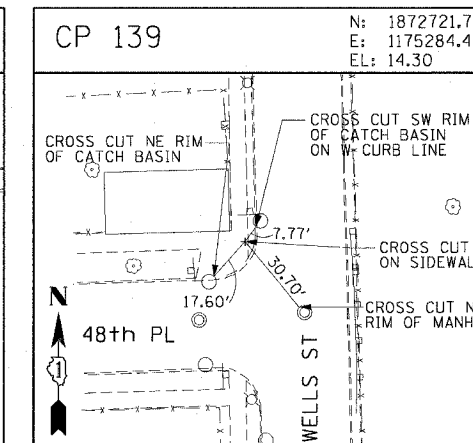
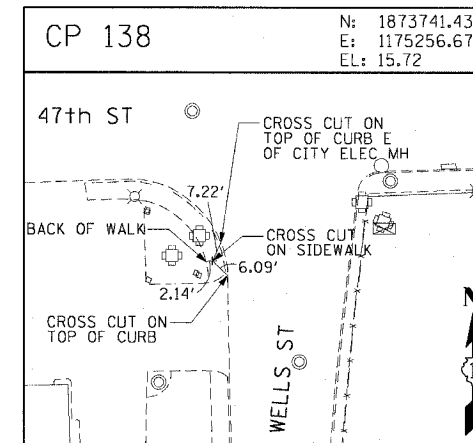
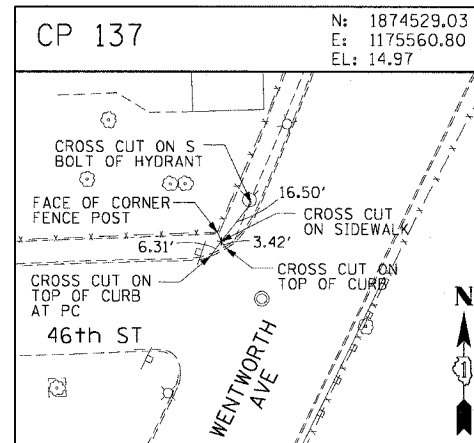
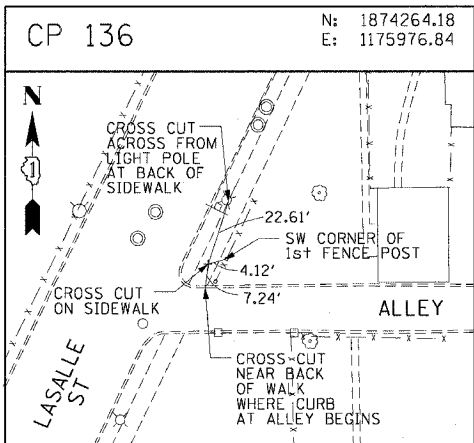


F.A.I. NO.	SECTION	COUNTY	TOTAL SHEETS	SHEET NO.
90/94	2004-071RS	COOK	54	20
STA.	TO STA.			
FED. ROAD DIST. NO. 1 ILLINOIS FED. AID PROJECT				
62810				



REVISIONS	
NAME	DATE

ILLINOIS DEPARTMENT OF TRANSPORTATION
F.A.I. 90/94 (DAN RYAN EXPRESSWAY)
51st ST TO 48th PL (WELLS STREET)
SURVEY TIES AND CONTROL POINTS

SCALE: 1"=30'
DATE: December 17, 2004

DRAWN BY: MRK
CHECKED BY: JAL



m:\p\04658\civil\14-civil\9-odd_civil\9-0616\stt\alignments\03\0320.dwg 3/05/04 AM 12/19/2004