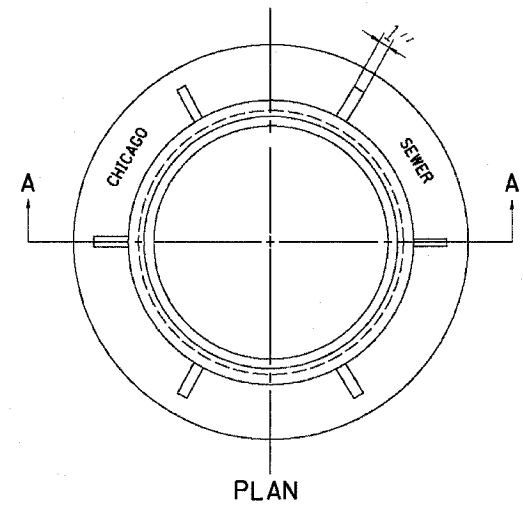
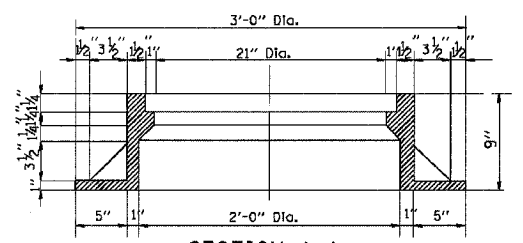


|   |            |        |              |     |
|---|------------|--------|--------------|-----|
| F.A. RTE.                                       | SECTION    | COUNTY | TOTAL SHEETS | NO. |
| 90/94   | 2004-071RS | COOK   | 54           | 43  |
| STA.  | TO STA.    |        |              |     |
| FED. ROAD DIST. NO. 1 ILLINOIS FED. AID PROJECT |            |        |              |     |

62810



**PLAN**

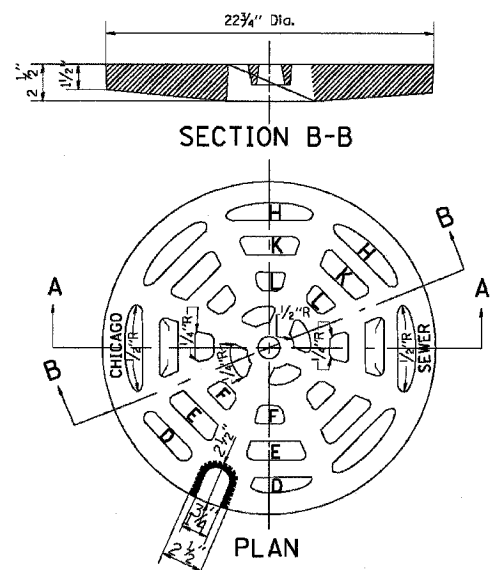


**SECTION A-A**

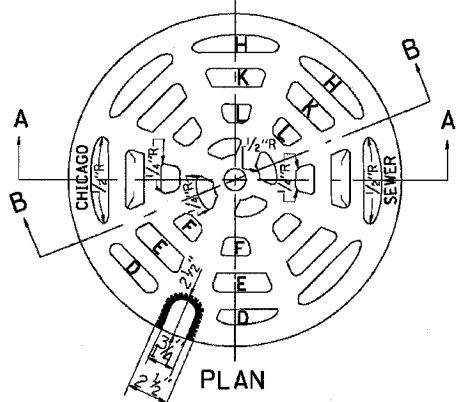
NOTE: Metal Plates Must Be Furnished For Perforated Lids On Manholes

**CHICAGO STANDARD MANHOLE FRAME**

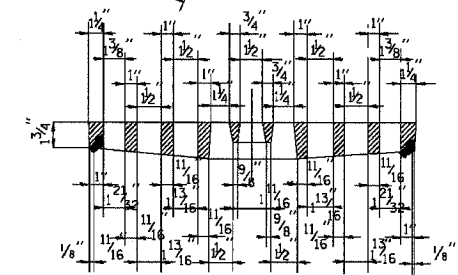
Scale: 1/2"=1'-0"  
Material: Cast Iron



**SECTION B-B**



**PLAN**

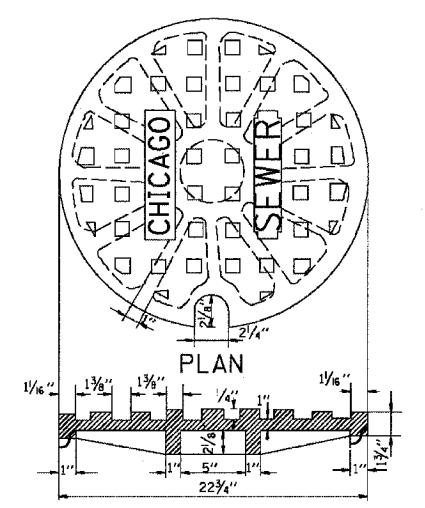


**SECTION A-A**

**PERFORATED LID FOR CATCH BASINS & MANHOLES**

Scale: 2"=1'-0"  
Material: Cast Iron

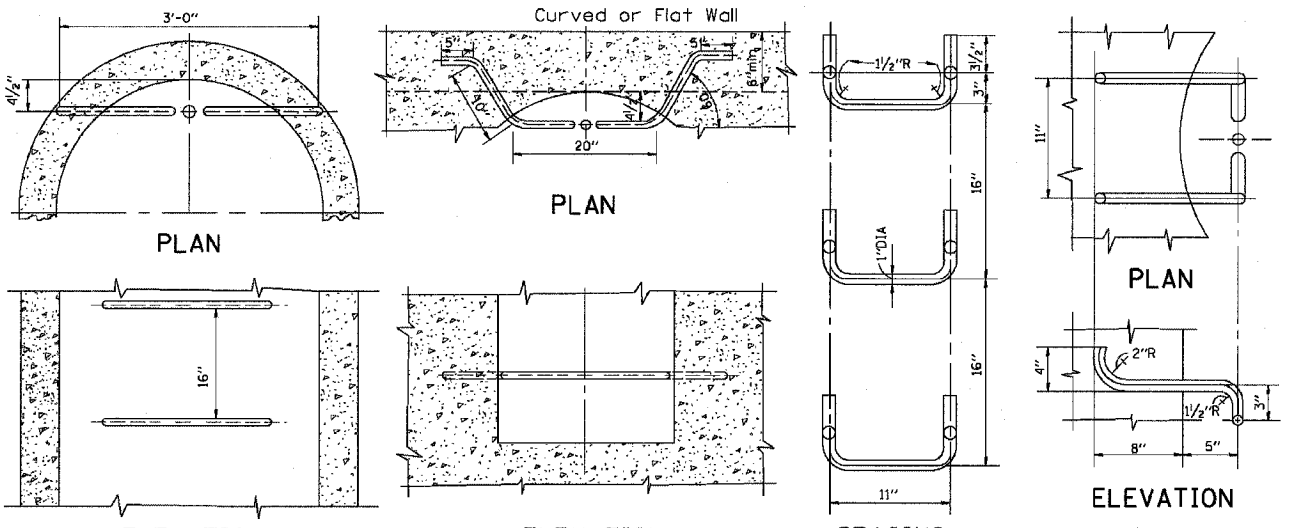
- SECTION D-D
- SECTION E-E
- SECTION F-F
- SECTION H-H
- SECTION K-K
- SECTION L-L



**PLAN**

**SOLID LID FOR MANHOLES**

Scale: NONE  
Material: Cast Iron



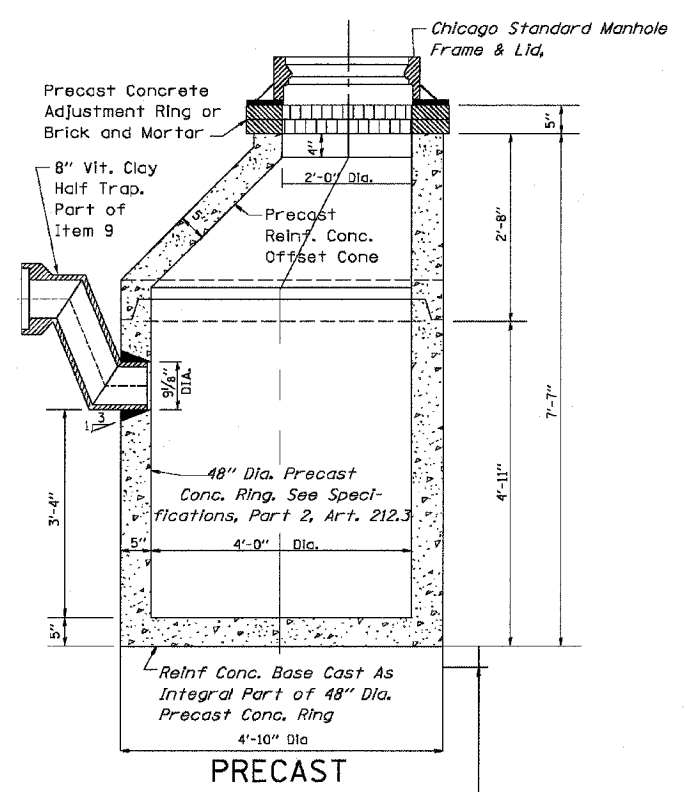
**ELEVATION TYPE X**  
Scale: 1"=1'-0"

**ELEVATION TYPE Y**  
Scale: 1"=1'-0"

**SPACING HANDHOLD-TYPE Z RUNG**  
Scale: 1/2"=1'-0"

**STANDARD LADDER RUNGS**

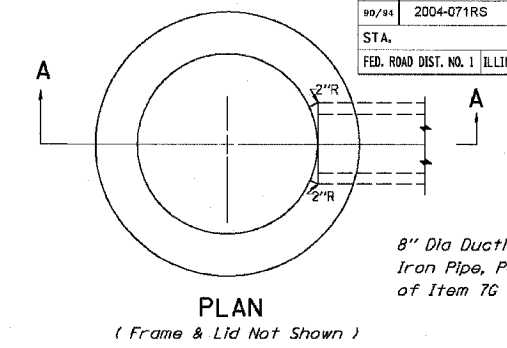
All Ladder Rungs Shall Be Aluminum or Galvanized Wrought Iron As Specified in Specifications, Part 2, Article 214.2. Rungs Shall Be 1" Diameter or of A Shape Having An Equivalent Cross-Sectional Area



**PRECAST**

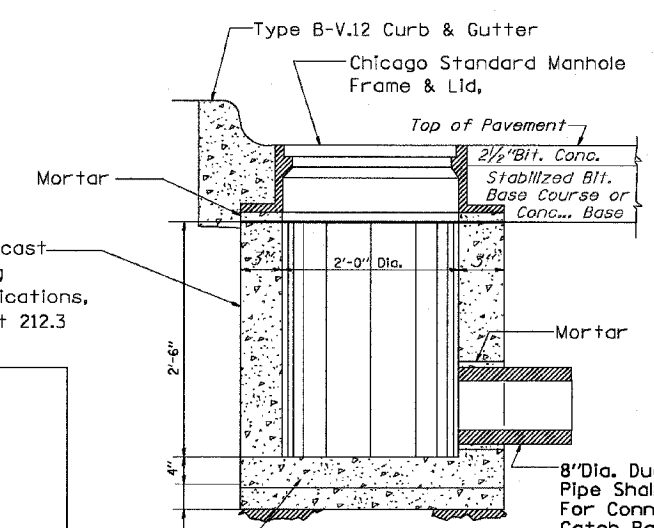
Note: 6" Minimum Granular Embedment Under All Catch Basins

**STANDARD CATCH BASINS**  
Scale: 3/4"=1'-0"  
Item 9



**PLAN**

8" Dia Ductile Iron Pipe, Part of Item 7G



**SECTION A-A**

24" Dia. Precast Conc... Ring See Specifications, Part 2, Art 212.3

8" Dia. Ductile Iron Pipe Shall Be Used For Connection to Catch Basin Pipe To Be Laid On A Minimum Grade of 1%

**STANDARD INLETS**  
Scale 1"=1'-0"  
Item 12

This Inlet Detail Is Sometimes Referred To As "Chicago Standard Inlet, Type A"

NOTE: INLETS SHALL NOT BE CONSTRUCTED UNLESS IT IS IMPOSSIBLE TO CONSTRUCT A CATCH BASIN. THE CONTRACTOR SHALL HAVE THE DEPARTMENT OF SEWERS APPROVAL BEFORE CONSTRUCTING INLETS

| REVISIONS |          |
|-----------|----------|
| NAME      | DATE     |
| M. GOMEZ  | 01/25/01 |
|           |          |
|           |          |
|           |          |
|           |          |
|           |          |
|           |          |
|           |          |
|           |          |
|           |          |

CITY OF CHICAGO  
DEPARTMENT OF SEWERS  
ENGINEERING DIVISION  
ILLINOIS DEPARTMENT OF TRANSPORTATION  
**CITY OF CHICAGO  
CATCH BASIN, INLET AND  
MANHOLE DETAILS**

SCALE: VERT. HORIZ. DATE 10/18/2002  
DRAWN BY CHECKED BY  
BD600-13 (BD47)  
REVISION DATE: 01/25/01

\*DATE-TIME\*  
\*DGN-SPEC\*  
VI-BD47