

F.A.I. RTE.	SECTION	COUNTY	TOTAL SHEETS	SHEET NO.
90/94	2004-072RS	COOK	54	1

STATE OF ILLINOIS  
DEPARTMENT OF TRANSPORTATION  
DIVISION OF HIGHWAYS

D-91-419-01

**INDEX OF SHEETS**  
FOR INDEX OF SHEETS, SEE SHEET NO. 2

**PLANS FOR PROPOSED  
FEDERAL AID HIGHWAY**

F.A.I. ROUTE 90/94 (DAN RYAN EXPRESSWAY)  
SECTION 2004-072RS  
PROJECT: IM-094-3(382)056  
INSTALLATION OF SEWER AND PAVING ALONG  
WENTWORTH AVENUE FROM 500 FOOT NORTH OF  
51ST STREET TO 1100 FOOT SOUTH OF 47TH STREET  
COOK COUNTY  
C-91-296-04

PROJECT LOCATED IN CITY OF CHICAGO

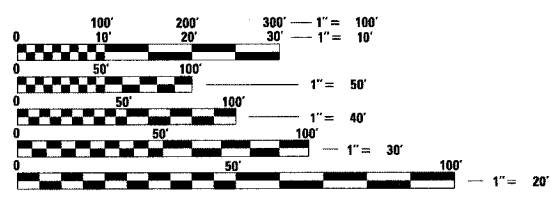
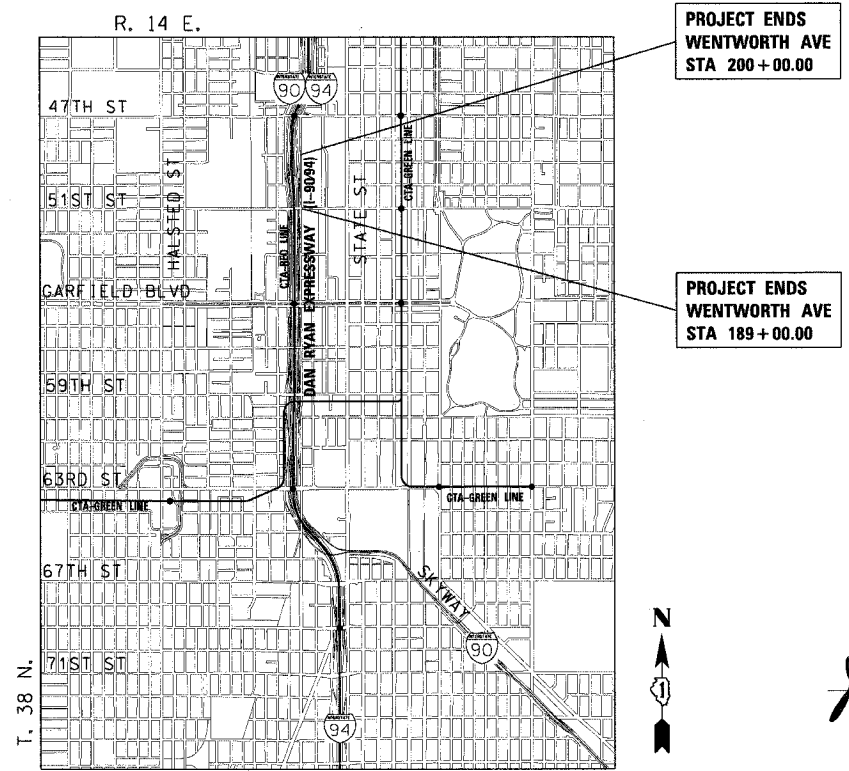


**DESIGN DESIGNATION**

WENTWORTH AVE: 6259 (20) URBAN COLLECTOR

ADT (2020) 11,000  
DESIGN POSTED (2020) 30  
SPEED 25

FRONTAGE ROADS:  
WENTWORTH AVE 11,000 30 25



FULL SIZE PLANS HAVE BEEN PREPARED USING STANDARD ENGINEERING SCALES. REDUCED SIZED PLANS WILL NOT CONFORM TO STANDARD SCALES. IN MAKING MEASUREMENTS ON REDUCED PLANS, THE ABOVE SCALES MAY BE USED.

DIGGER:  
CHICAGO UTILITY ALERT NETWORK  
(312) 744-7000

CONTRACT NO. 62811

**LOCATION MAP**

0 1/2 MILE 1 MILE 1" = 1/2 MILE

GROSS LENGTH OF PROJECT = 1100 FT (0.208 MILES)  
NET LENGTH OF PROJECT = 1100 FT (0.208 MILES)



John A. Lukowski  
11-30-05 EXPIRES

STATE OF ILLINOIS  
DEPARTMENT OF TRANSPORTATION  
DIVISION OF HIGHWAYS

SUBMITTED Dec 23 20 04

*Dave Osh*  
DEPUTY DIRECTOR OF HIGHWAYS, REGION ENGINEER

February 4, 20 05  
*Mike Shire*  
ENGINEER OF DESIGN AND ENVIRONMENT

February 4, 20 05  
*Victor Madec*  
DIRECTOR, DIVISION OF HIGHWAYS

**PRINTED BY THE AUTHORITY  
OF THE STATE OF ILLINOIS**

**CTE ENGINEERS**  
CONSOER TOWNSEND ENVIRODYNE ENGINEERS, INC.  
303 EAST WACKER DRIVE, SUITE 600  
CHICAGO ILLINOIS 60601-5212, PHONE: (312) 938-0300

DISTRICT ONE DESIGN/CONSULTANT SERVICES PROJECT MANAGER  
RAJENDRA SHAH (847) 705-4437