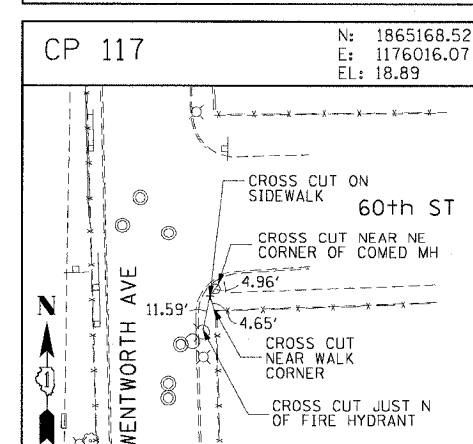
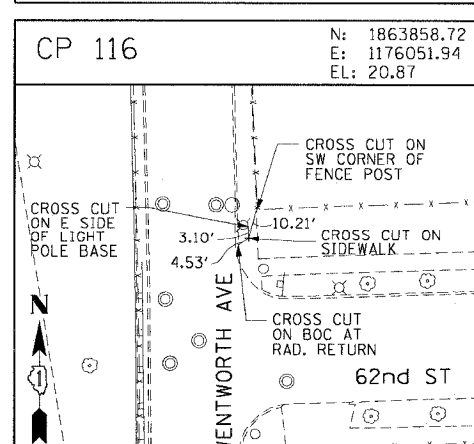
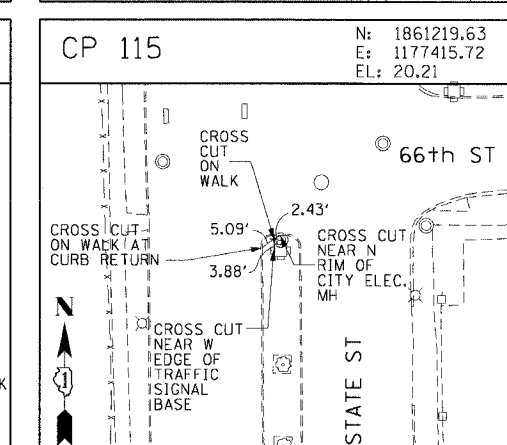
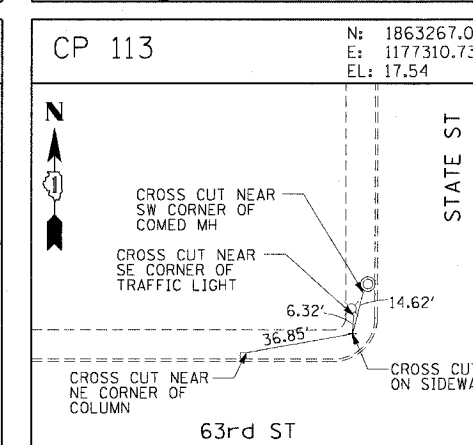
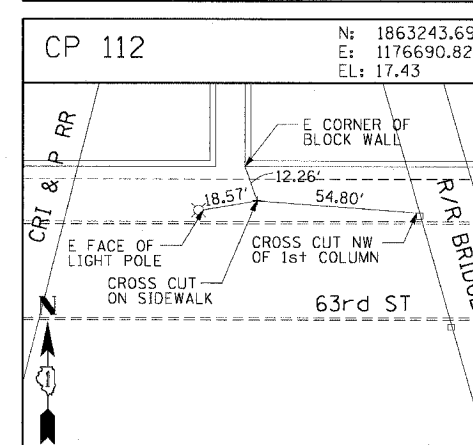
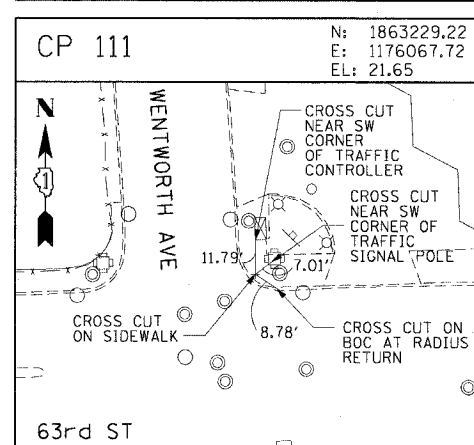
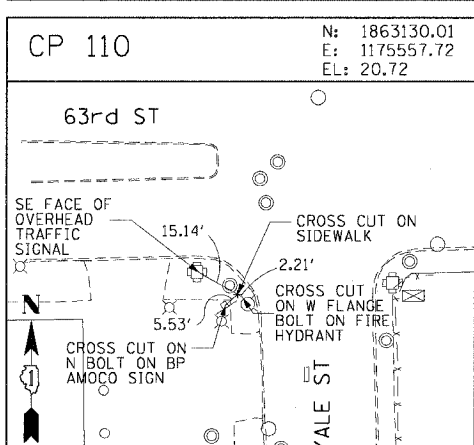
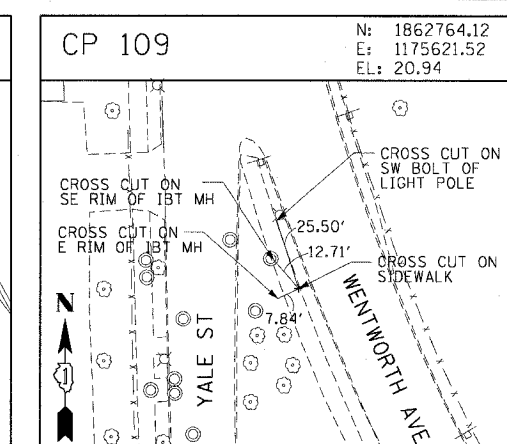
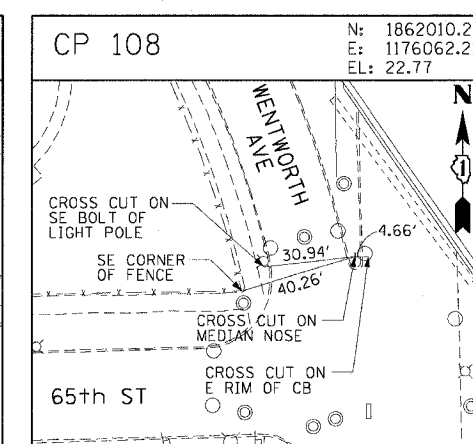
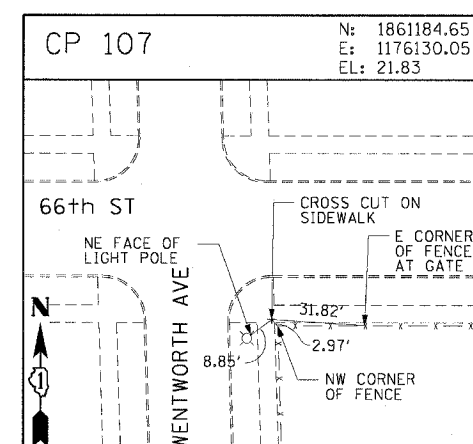
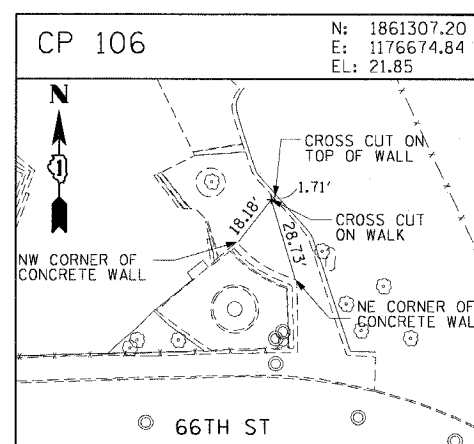
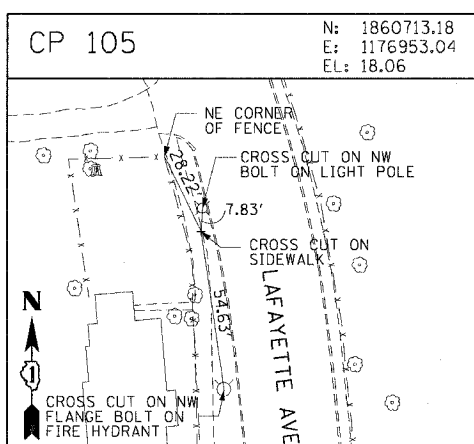
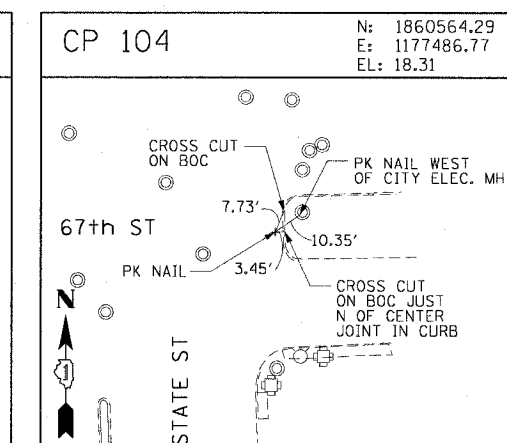
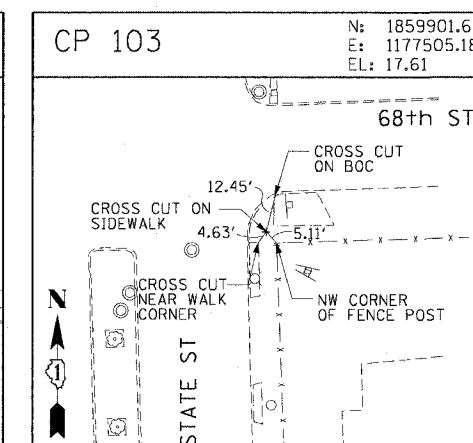
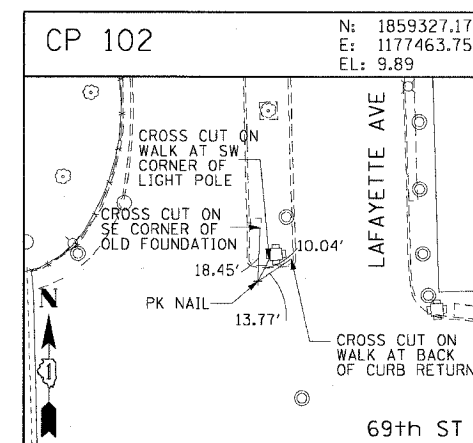
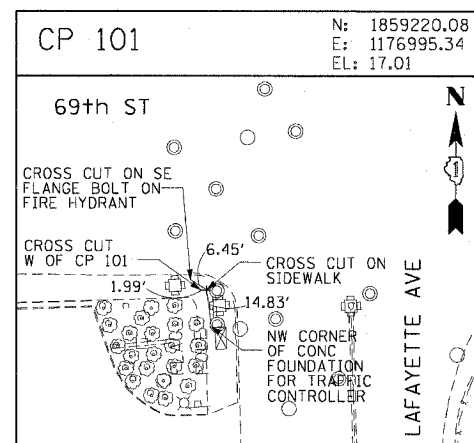
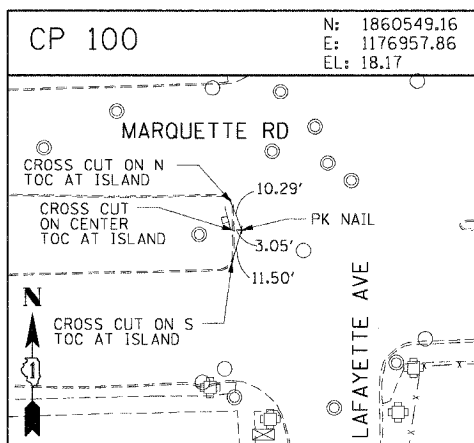


F.A.I. RTE.	SECTION	COUNTY	TOTAL SHEETS	SHEET NO.
90/94	2004-072R5	COOK	54	18
STA.		TO STA.		
FED. ROAD DIST. NO. 1		ILLINOIS		FED. AID PROJECT
62811				



REVISIONS	
NAME	DATE

ILLINOIS DEPARTMENT OF TRANSPORTATION
F.A.I. 90/94 (DAN RYAN EXPRESSWAY)
51st ST TO 48th PL (WENTWORTH AVENUE)
SURVEY TIES AND CONTROL POINTS

SCALE: 1"=30'
DATE: December 17, 2004
DRAWN BY: MRK
CHECKED BY: JAL

12/17/2004 10:33:29 AM