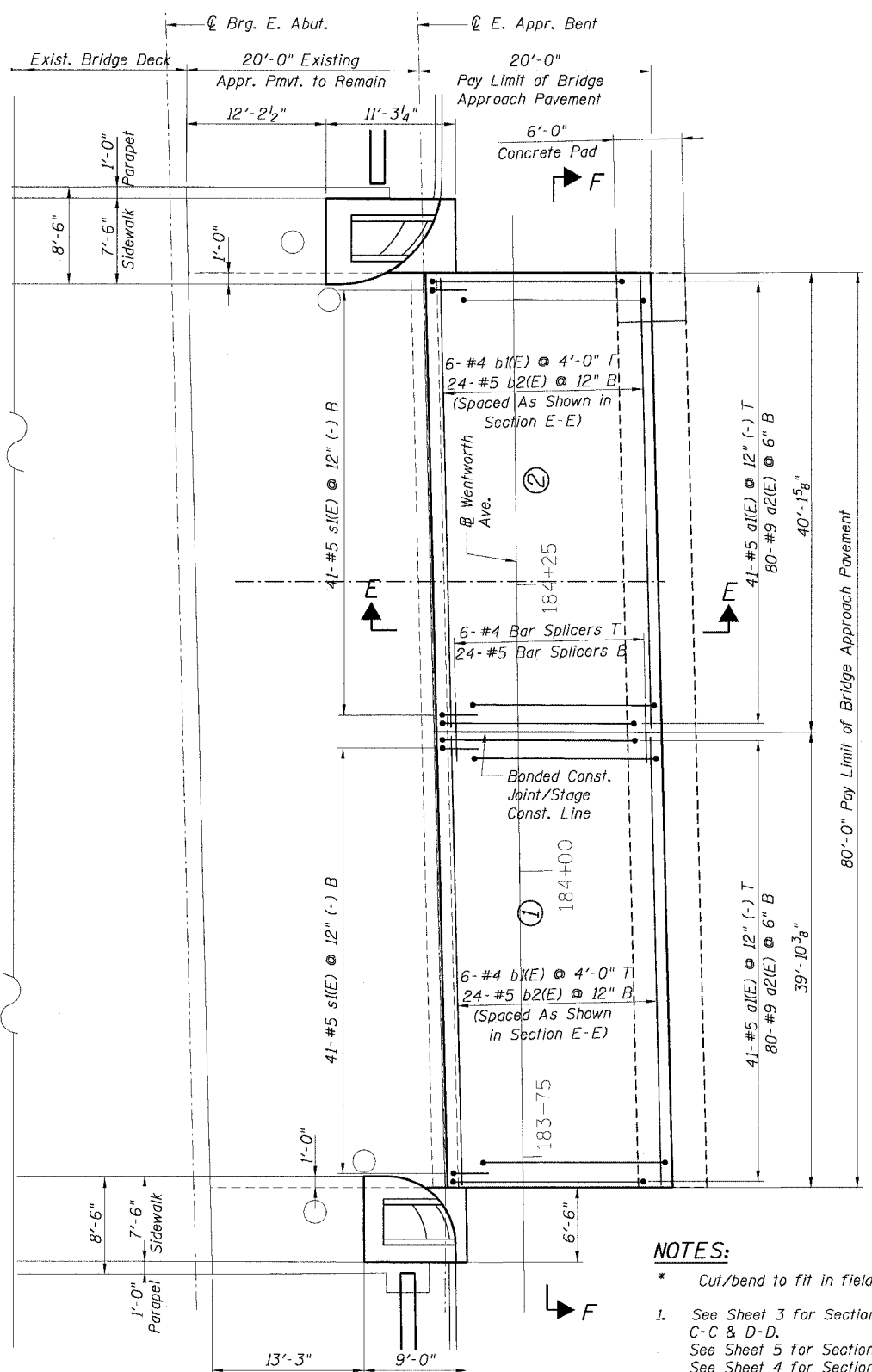
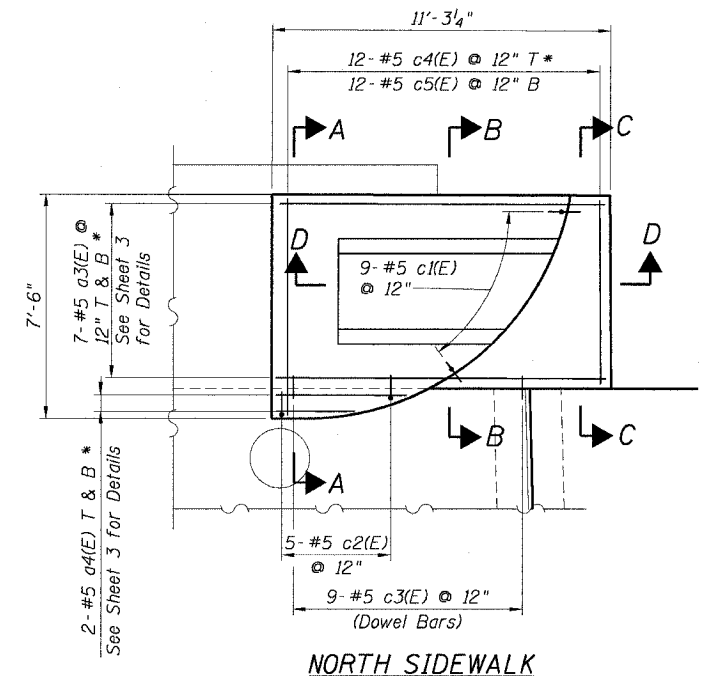


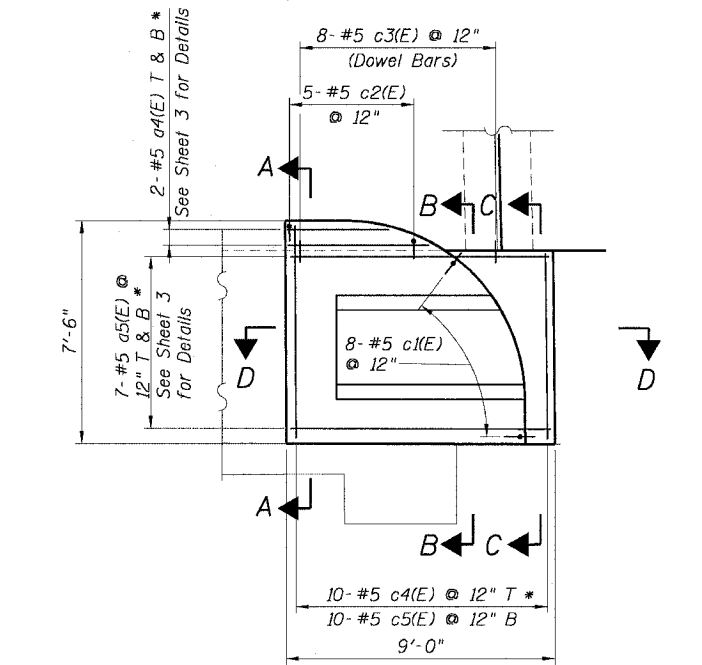
EAST APPROACH REMOVAL PLAN



EAST APPROACH REPLACEMENT PLAN



NORTH SIDEWALK



SOUTH SIDEWALK

ABBREVIATIONS
 B Bottom
 T Top

- NOTES:**
- * Cut/bend to fit in field.
 - 1. See Sheet 3 for Sections A-A, B-B, C-C & D-D. See Sheet 5 for Section E-E. See Sheet 4 for Section F-F.
 - 2. Reinforcement bars designated "E" shall be epoxy coated.
 - 3. ①, ② indicates pouring sequence.
 - 4. See Sheet STD-1 for Bar Splicer Details.

| REVISIONS | |
|-----------|------|
| NAME | DATE |
| | |
| | |
| | |
| | |
| | |

ILLINOIS DEPARTMENT OF TRANSPORTATION
 F.A.I. 90/94 (DAN RYAN EXPRESSWAY)
 51st ST (WENTWORTH AVE AND WELLS ST)
 APPROACH PAVEMENT
 GENERAL PLAN AND SECTIONS
 51ST STREET BRIDGE
 STRUCTURE NUMBER 016-1157

SCALE: NONE
 DATE: December 23, 2004
 DRAWN BY: GC
 CHECKED BY: SS