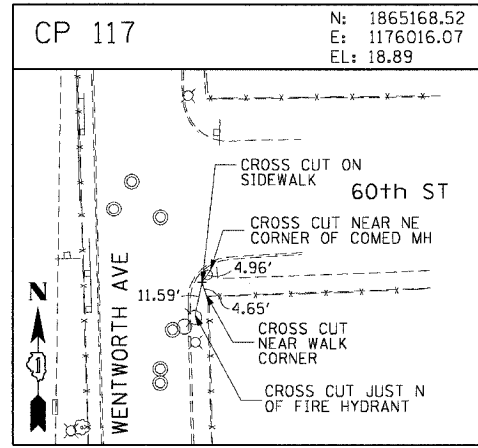
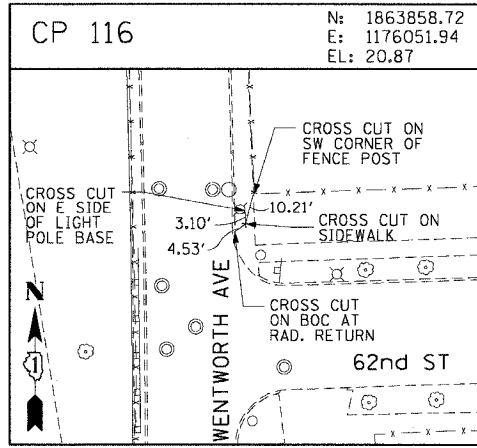
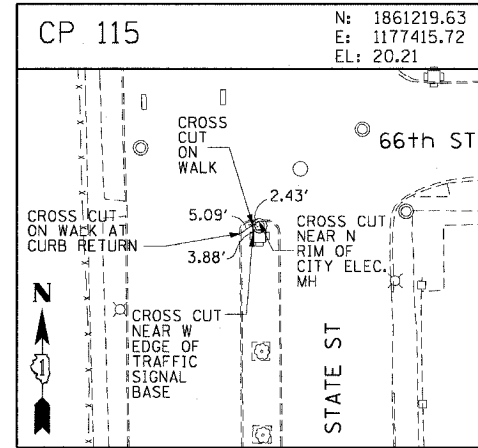
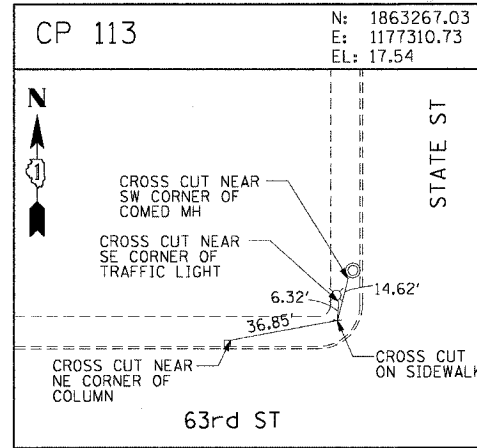
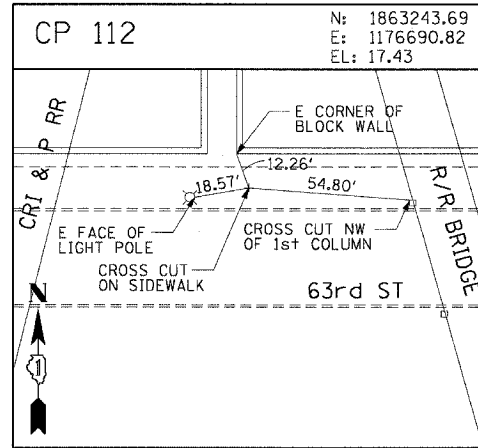
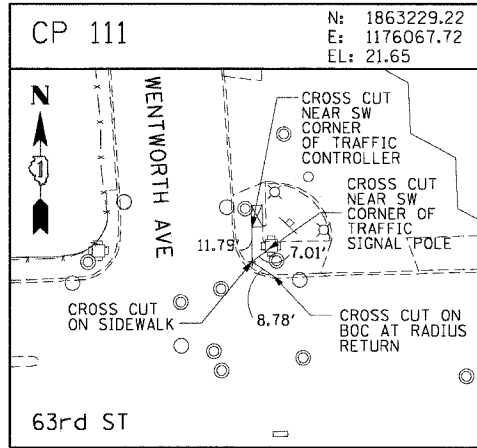
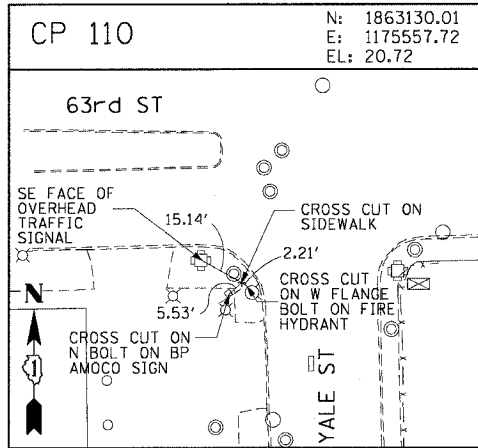
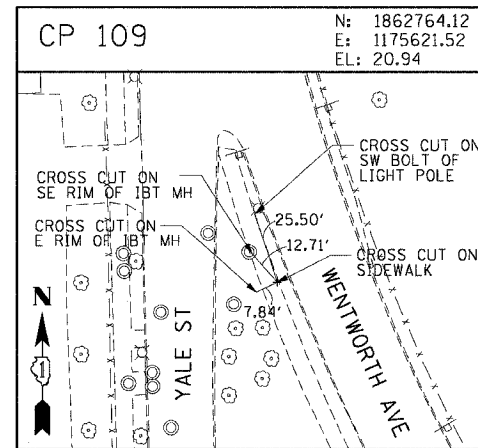
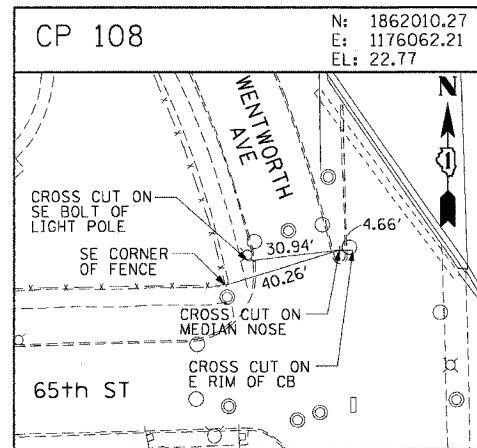
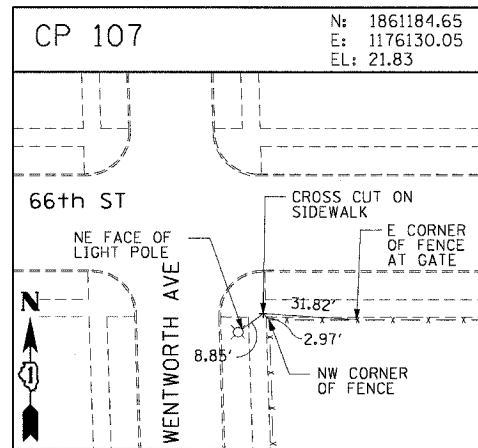
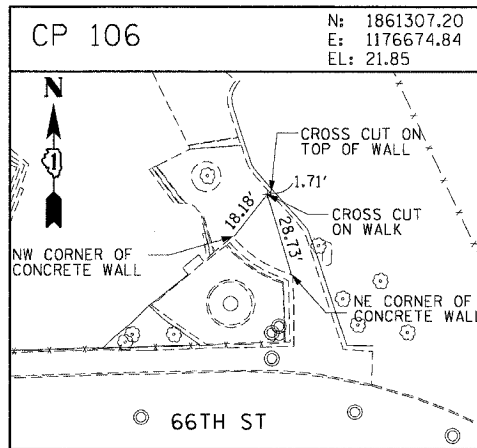
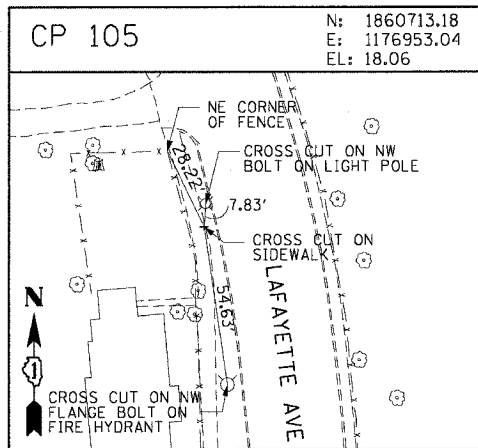
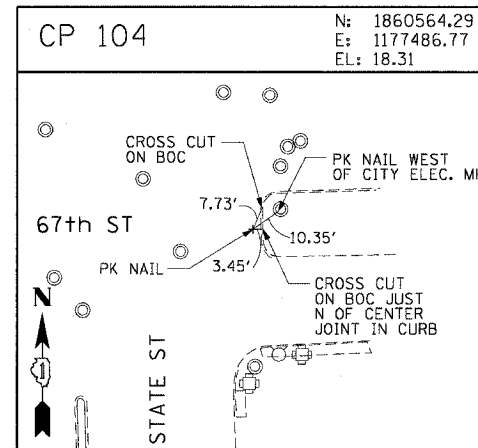
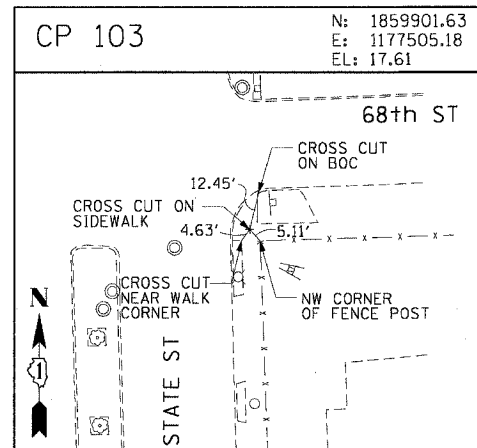
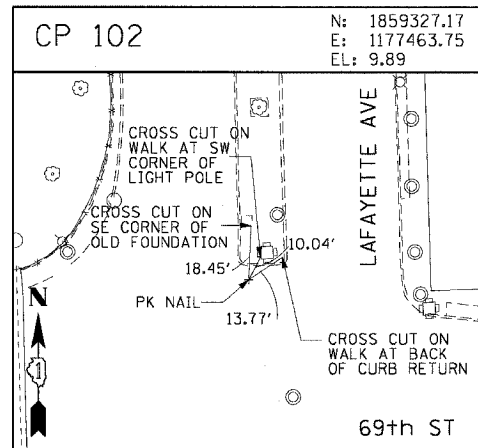
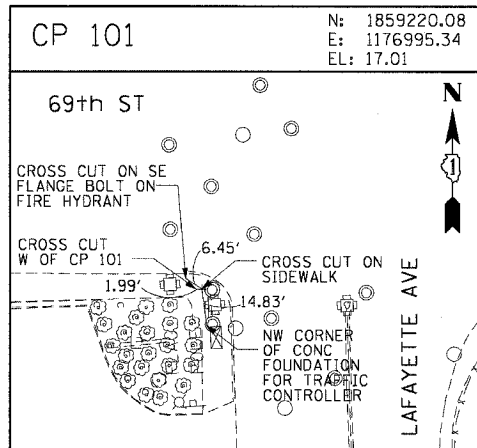
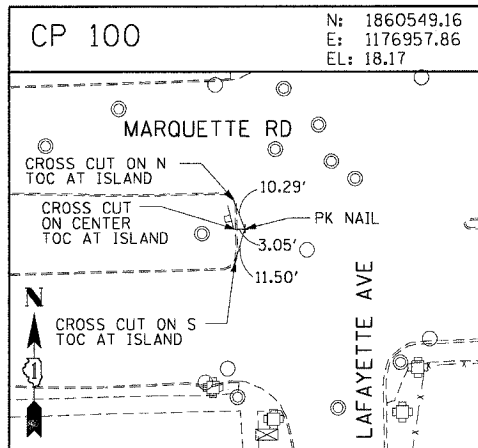


F.A.I. RATE:	SECTION	COUNTY	TOTAL SHEETS	SHEET NO.
90/94	2004-074RS	COOK	63	20
STA.	TO STA.			
FED. ROAD DIST. NO. 1 ILLINOIS FED. AID PROJECT				
62813				



CTE ENGINEERS
 CONSER TOWNSEND ENVIRONMENTAL ENGINEERS, INC.
 303 EAST WACKER DRIVE, SUITE 600
 CHICAGO, ILLINOIS 60601-5212, PHONE: (312) 938-0300

REVISIONS	
NAME	DATE

ILLINOIS DEPARTMENT OF TRANSPORTATION
 F.A.I. 90/94 (DAN RYAN EXPRESSWAY)
 59th ST TO 57th ST (WELLS STREET)

SURVEY TIES AND CONTROL POINTS

SCALE: 1"=30'
 DATE: December 17, 2004

DRAWN BY: MRK
 CHECKED BY: JAL

12/14/2004 4:52:28 PM