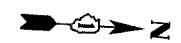
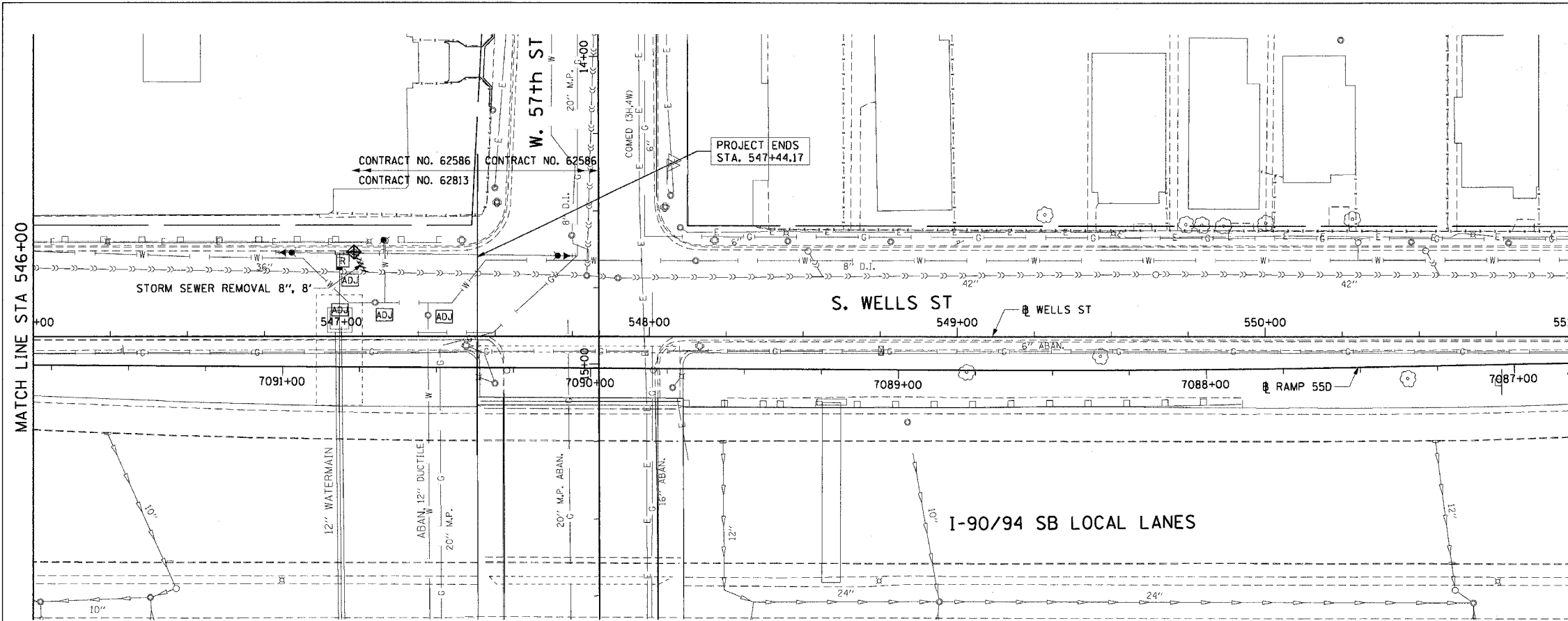


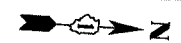
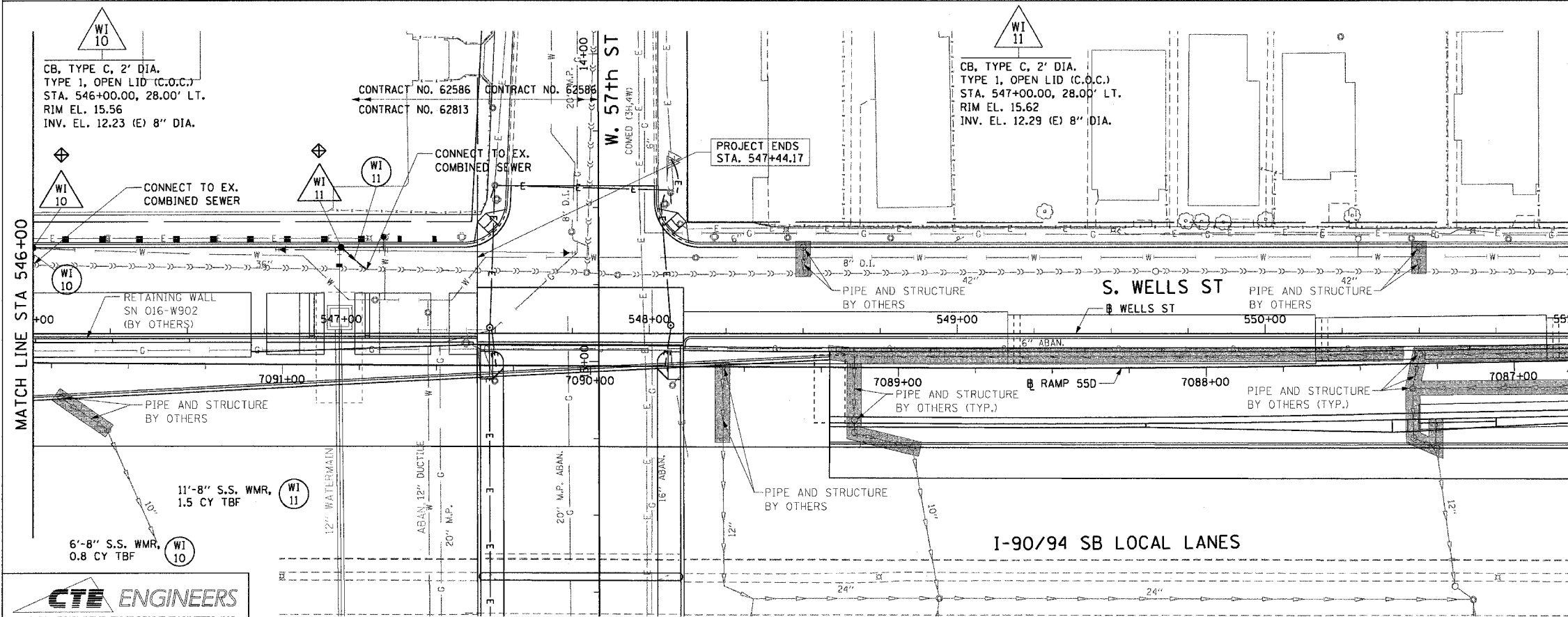
F.A.I. RTE.	SECTION	COUNTY	TOTAL SHEETS	SHEET NO.
90/94	2004-074RS	COOK	63	34
STA. 546+00		TO STA. 551+00		
FED. ROAD DIST. NO. 1 ILLINOIS FED. AID PROJECT				

62813



- LEGEND: EXISTING**
- INLET
 - CATCH BASIN
 - MANHOLE
 - STORM SEWER
 - COMBINED SEWER
 - PIPE UNDERDRAIN
 - [R] STRUCTURE TO BE REMOVED
 - [ADJ] STRUCTURE TO BE ADJUSTED
 - ==== STORM SEWER REMOVAL
 - ==== COMBINED SEWER REMOVAL

NOTE:
ALL EXISTING OPEN LID DRAINAGE STRUCTURES TO REMAIN THRU STAGE 2 OF CONTRACT 62586 SHALL HAVE INLET FILTERS INSTALLED.



- LEGEND: PROPOSED**
- INLET
 - CATCH BASIN
 - MANHOLE
 - STORM SEWER
 - COMBINED SEWER
 - PIPE UNDERDRAIN
 - PROPOSED SWALE
 - EA 01 PROPOSED STORM SEWER PIPE
 - EA 01 PROPOSED STRUCTURE
 - WORK TO BE DONE BY OTHERS
 - ◊ INLET FILTER

- NOTES:**
- SEE DRAINAGE SCHEDULES FOR STRUCTURE AND PIPE INFORMATION.
 - INLET FILTERS TO BE INSTALLED ON ALL PROP. DRAINAGE STR.

REVISIONS	
NAME	DATE

ILLINOIS DEPARTMENT OF TRANSPORTATION
F.A.I. 90/94 (DAN RYAN EXPRESSWAY)
59th ST TO 57th ST (WELLS STREET)

**DRAINAGE AND UTILITY PLANS
WELLS STREET**

SCALE: 1"=20'
DATE: December 17, 2004

DRAWN BY: PHP
CHECKED BY: JB

CTE ENGINEERS
CONSOER TOWNSEND ENVIRONMENTAL ENGINEERS, INC.
303 EAST WALKER DRIVE, SUITE 600
CHICAGO, ILLINOIS 60601-5292, PHONE: (312) 938-0300