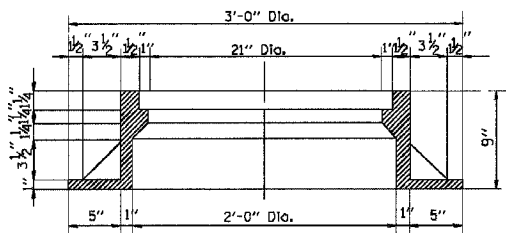
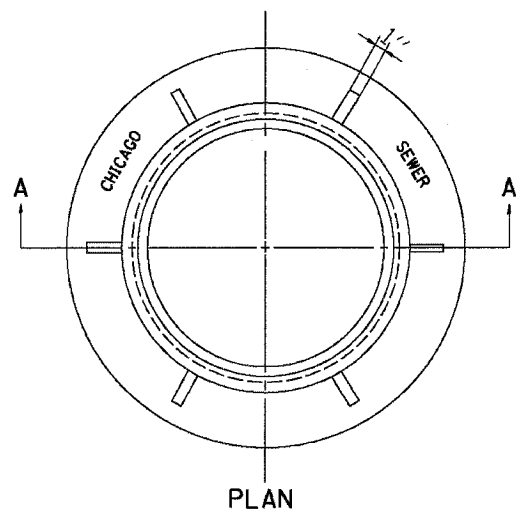


F.A. RT.	SECTION	COUNTY	TOTAL SHEETS	SHEET NO.
90/94	2004-074RS	COOK	63	48
STA.	TO STA.			
FED. ROAD DIST. NO. 1 ILLINOIS FED. AID PROJECT				62813

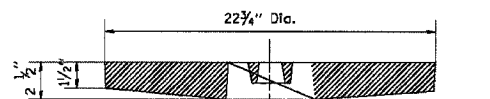


SECTION A-A

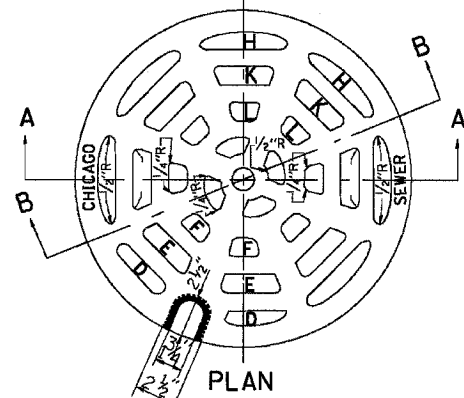
NOTE: Metal Plates Must Be Furnished For Perforated Lids On Manholes

CHICAGO STANDARD MANHOLE FRAME

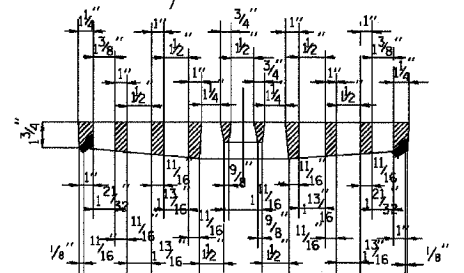
Scale: 1/2"=1'-0"
Material: Cast Iron



SECTION B-B



PLAN



SECTION A-A

PERFORATED LID FOR CATCH BASINS & MANHOLES

Scale: 2"=1'-0"
Material: Cast Iron

SECTION D-D

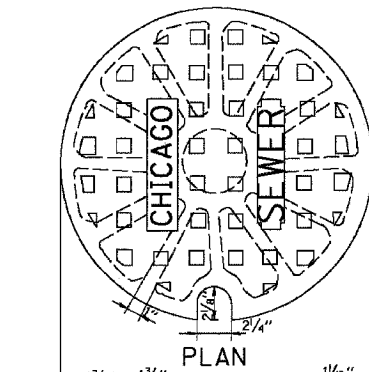
SECTION E-E

SECTION F-F

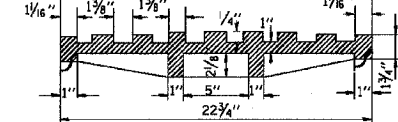
SECTION H-H

SECTION K-K

SECTION L-L



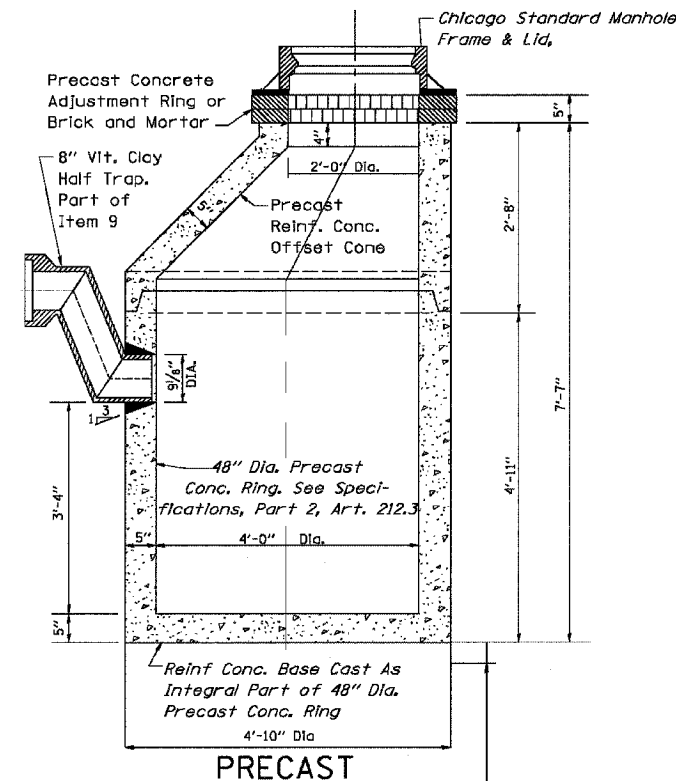
PLAN



SECTION

SOLID LID FOR MANHOLES

Scale: NONE
Material: Cast Iron

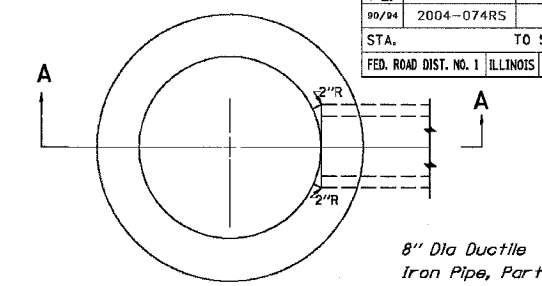


PRECAST

NOTE:
6" Minimum Granular Embedment Under All Catch Basins

STANDARD CATCH BASINS

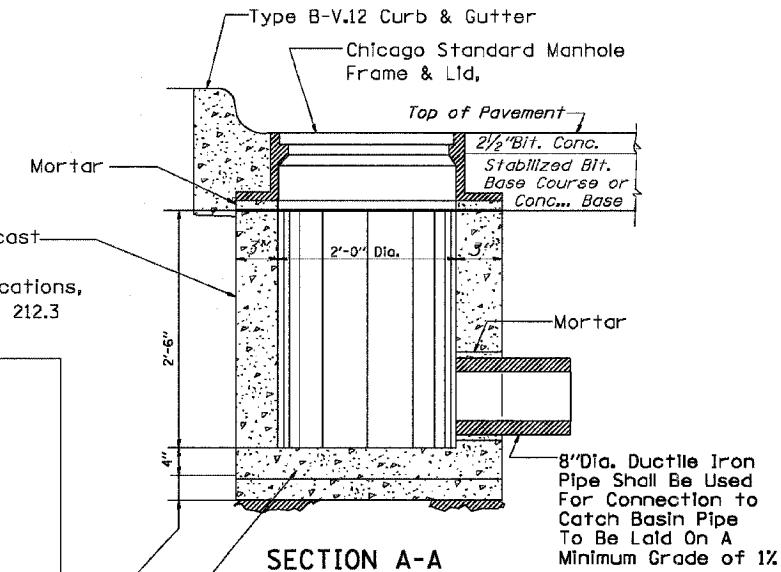
Scale: 3/4"=1'-0"
Item 9



PLAN

(Frame & Lid Not Shown)

8" Dia Ductile Iron Pipe, Part of Item 7C



SECTION A-A

STANDARD INLETS

Scale 1"=1'-0"
Item 12
This Inlet Detail Is Sometimes Referred To As "Chicago Standard Inlet, Type A"

NOTE:
INLETS SHALL NOT BE CONSTRUCTED UNLESS IT IS IMPOSSIBLE TO CONSTRUCT A CATCH BASIN. THE CONTRACTOR SHALL HAVE THE DEPARTMENT OF SEWERS APPROVAL BEFORE CONSTRUCTING INLETS

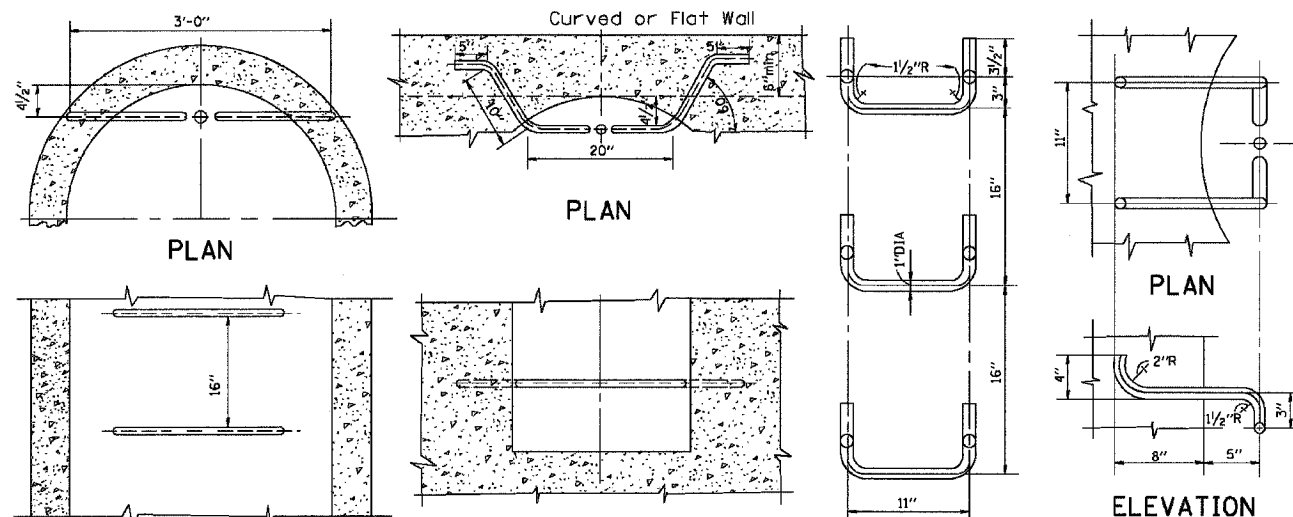
REVISIONS	
NAME	DATE
M. GOMEZ	01/25/01

CITY OF CHICAGO
DEPARTMENT OF SEWERS
ENGINEERING DIVISION

ILLINOIS DEPARTMENT OF TRANSPORTATION
CITY OF CHICAGO
CATCH BASIN, INLET AND
MANHOLE DETAILS

SCALE: HORIZ.
DATE 10/18/2002

DRAWN BY
CHECKED BY
BD600-13 (B047)
REVISION DATE: 01/25/01



ELEVATION TYPE X

Scale: 1"=1'-0"

ELEVATION TYPE Y

Scale: 1"=1'-0"

SPACING HANDHOLD-TYPE Z RUNG

Scale: 1/2"=1'-0"

All Ladder Rungs Shall Be Aluminum or Galvanized Wrought Iron As Specified In Specifications, Part 2, Article 214.2. Rungs Shall Be 1" Diameter or of A Shape Having An Equivalent Cross-Sectional Area

STANDARD LADDER RUNGS