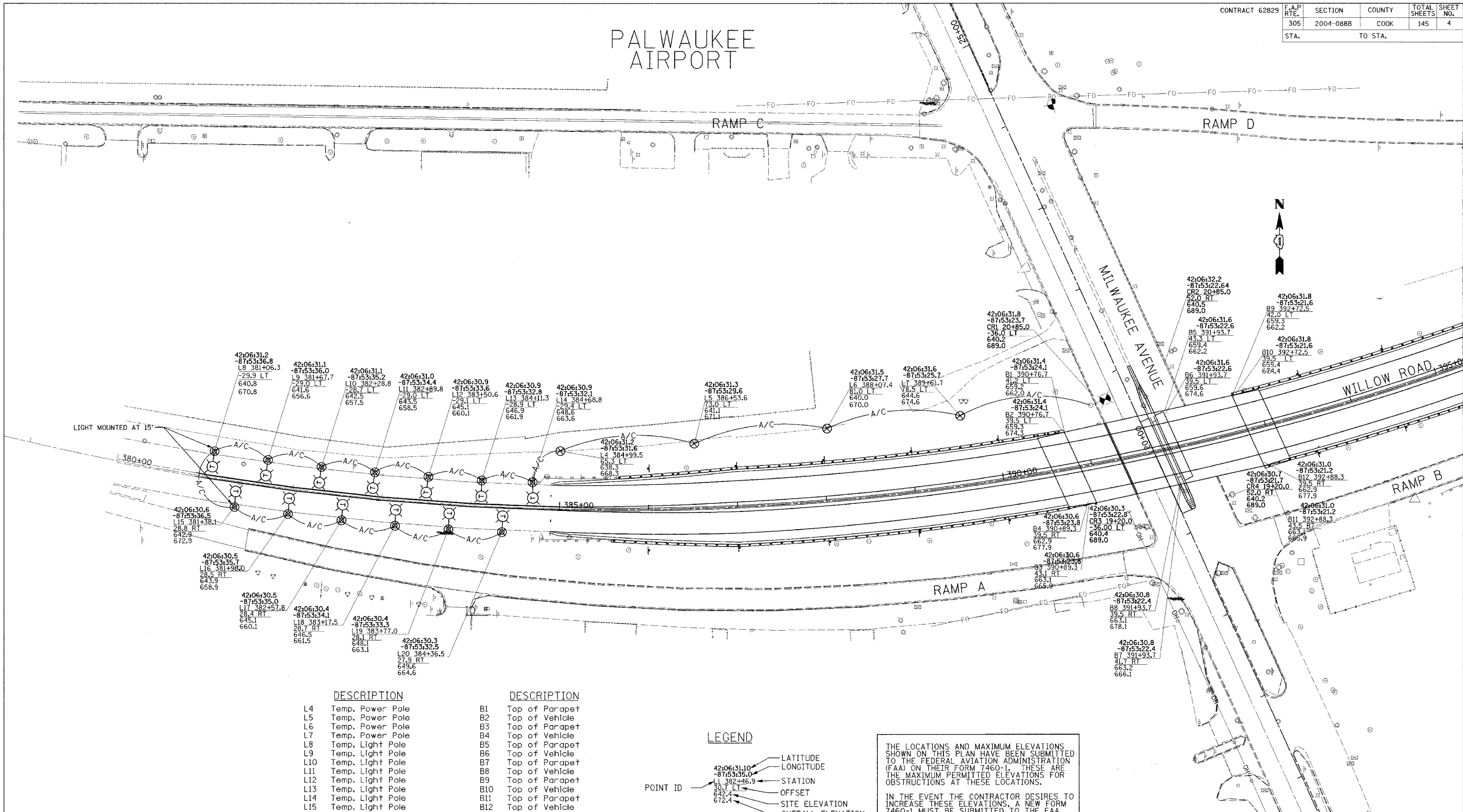


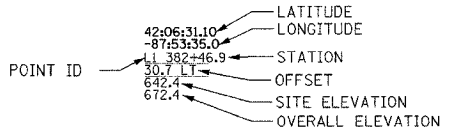
CONTRACT 62829	F.A.P. RTE.	SECTION	COUNTY	TOTAL SHEETS	SHEET NO.
	305	2004-0888	COOK	145	4
	STA.	TO STA.			

PALWAUKEE AIRPORT



DESCRIPTION	DESCRIPTION
L4 Temp. Power Pole	B1 Top of Parapet
L5 Temp. Power Pole	B2 Top of Vehicle
L6 Temp. Power Pole	B3 Top of Parapet
L7 Temp. Power Pole	B4 Top of Vehicle
L8 Temp. Light Pole	B5 Top of Parapet
L9 Temp. Light Pole	B6 Top of Vehicle
L10 Temp. Light Pole	B7 Top of Parapet
L11 Temp. Light Pole	B8 Top of Vehicle
L12 Temp. Light Pole	B9 Top of Parapet
L13 Temp. Light Pole	B10 Top of Vehicle
L14 Temp. Light Pole	B11 Top of Parapet
L15 Temp. Light Pole	B12 Top of Vehicle
L16 Temp. Light Pole	CR1 Tip of construction crane
L17 Temp. Light Pole	CR2 Tip of construction crane
L18 Temp. Light Pole	CR3 Tip of construction crane
L19 Temp. Light Pole	CR4 Tip of construction crane
L20 Temp. Light Pole	

LEGEND



THE LOCATIONS AND MAXIMUM ELEVATIONS SHOWN ON THIS PLAN HAVE BEEN SUBMITTED TO THE FEDERAL AVIATION ADMINISTRATION (FAA) ON THEIR FORM 7460-1. THESE ARE THE MAXIMUM PERMITTED ELEVATIONS FOR OBSTRUCTIONS AT THESE LOCATIONS.

IN THE EVENT THE CONTRACTOR DESIRES TO INCREASE THESE ELEVATIONS, A NEW FORM 7460-1 MUST BE SUBMITTED TO THE FAA.

Edwards and Kelcey	
REVISIONS	
NAME	DATE

ILLINOIS DEPARTMENT OF TRANSPORTATION

FAA COORDINATION

WILLOW ROAD
OVER US 45/IL 21 (MILWAUKEE AVE)
AND OVER DES PLAINES RIVER

SCALE: DRAWN BY MJO
DATE: JANUARY 2005 CHECKED BY PJM

A:\000005101\road\advance\contract\lighting\FAA Plan Set.dwg 12/28/2004 12:09:57 PM