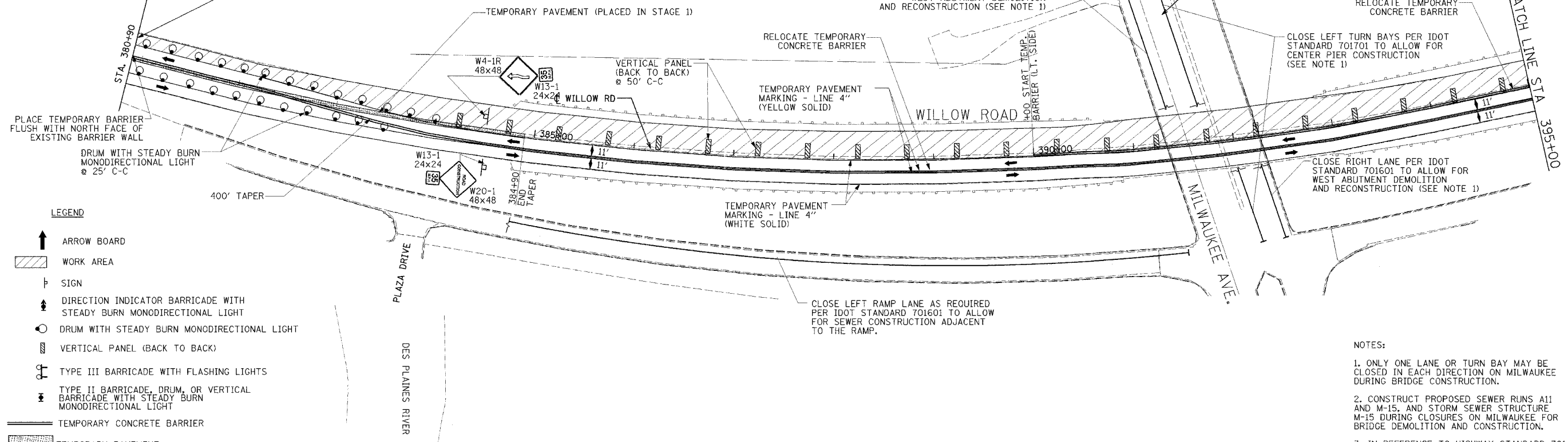


CONTRACT 62829	F.A.P. RTE.	SECTION	COUNTY	TOTAL SHEETS	SHEET NO.
	305	2004-088B	COOK	145	31
	STA.	TO STA.			

SEE STANDARD 701416 AND STANDARD 701400 FOR SIGNING DETAILS

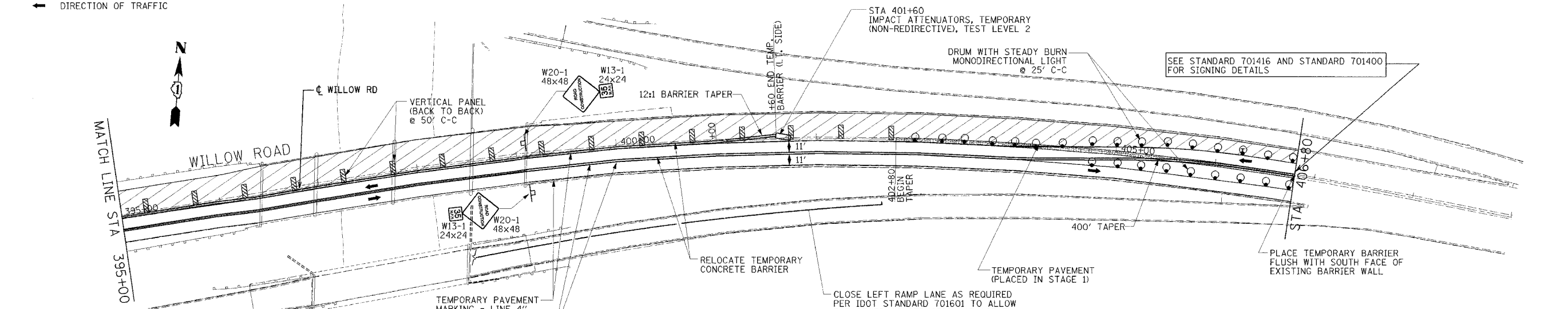


LEGEND

- ARROW BOARD
- WORK AREA
- SIGN
- DIRECTION INDICATOR BARRICADE WITH STEADY BURN MONODIRECTIONAL LIGHT
- DRUM WITH STEADY BURN MONODIRECTIONAL LIGHT
- VERTICAL PANEL (BACK TO BACK)
- TYPE III BARRICADE WITH FLASHING LIGHTS
- TYPE II BARRICADE, DRUM, OR VERTICAL BARRICADE WITH STEADY BURN MONODIRECTIONAL LIGHT
- TEMPORARY CONCRETE BARRIER
- TEMPORARY PAVEMENT
- DIRECTION OF TRAFFIC

NOTES:

1. ONLY ONE LANE OR TURN BAY MAY BE CLOSED IN EACH DIRECTION ON MILWAUKEE DURING BRIDGE CONSTRUCTION.
2. CONSTRUCT PROPOSED SEWER RUNS A11 AND M-15, AND STORM SEWER STRUCTURE M-15 DURING CLOSURES ON MILWAUKEE FOR BRIDGE DEMOLITION AND CONSTRUCTION.
3. IN REFERENCE TO HIGHWAY STANDARD 701416, "L" = 400' AND "T" = 1790' ON THIS SHEET.



		ILLINOIS DEPARTMENT OF TRANSPORTATION	
		SUGGESTED CONSTRUCTION STAGING	
REVISIONS NAME DATE		STAGE 2 WILLOW ROAD	
WILLOW ROAD OVER US 45/IL 21 (MILWAUKEE AVE) AND OVER DES PLAINES RIVER		DATE JANUARY 2005	
DRAWN BY CADD		CHECKED BY PJM	

03/15/05 03:51:37 PM 01/12/2005