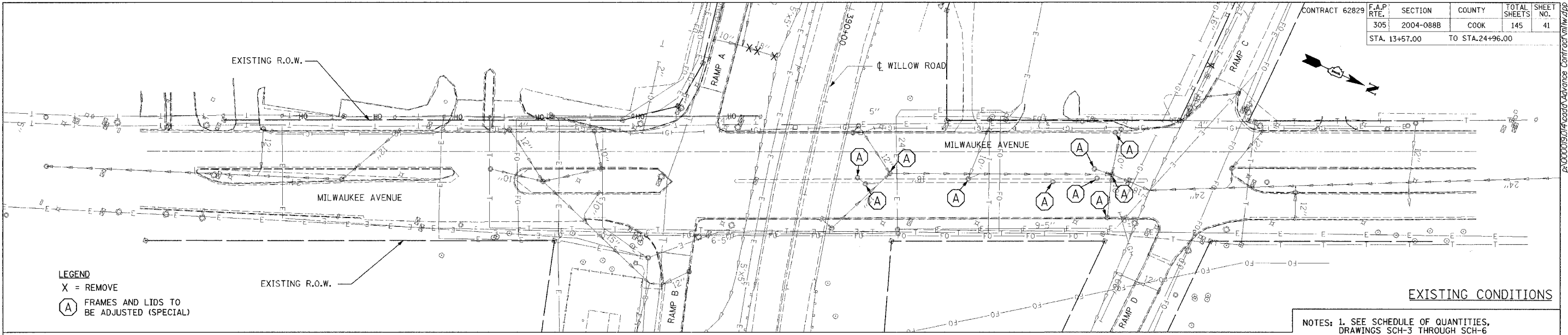


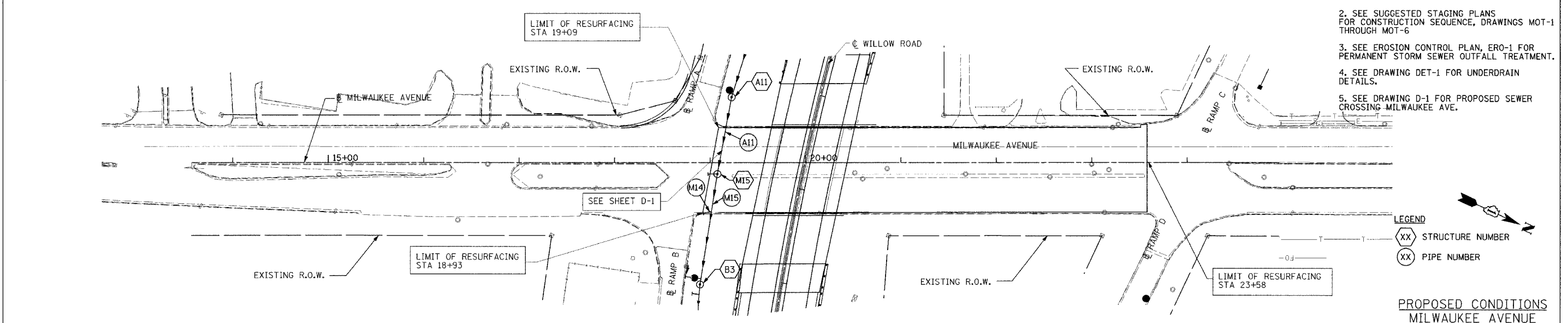
DATE: \_\_\_\_\_ BY: \_\_\_\_\_  
 CHECKED: \_\_\_\_\_  
 DATE: \_\_\_\_\_ BY: \_\_\_\_\_  
 CHECKED: \_\_\_\_\_

DATE: \_\_\_\_\_ BY: \_\_\_\_\_  
 CHECKED: \_\_\_\_\_  
 DATE: \_\_\_\_\_ BY: \_\_\_\_\_  
 CHECKED: \_\_\_\_\_

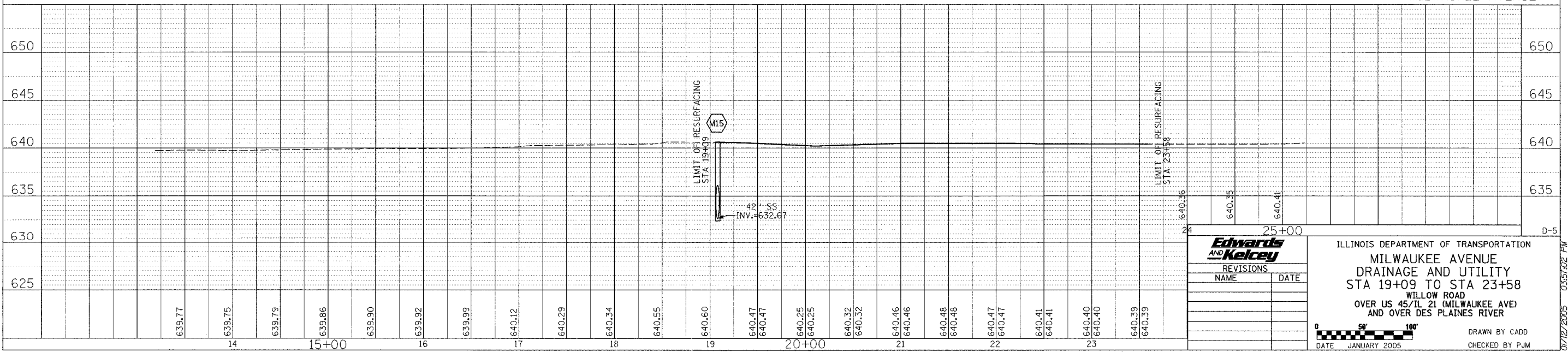


EXISTING CONDITIONS

- NOTES:
1. SEE SCHEDULE OF QUANTITIES, DRAWINGS SCH-3 THROUGH SCH-6
  2. SEE SUGGESTED STAGING PLANS FOR CONSTRUCTION SEQUENCE, DRAWINGS MOT-1 THROUGH MOT-6
  3. SEE EROSION CONTROL PLAN, ERO-1 FOR PERMANENT STORM SEWER OUTFALL TREATMENT.
  4. SEE DRAWING DET-1 FOR UNDERDRAIN DETAILS.
  5. SEE DRAWING D-1 FOR PROPOSED SEWER CROSSING MILWAUKEE AVE.



PROPOSED CONDITIONS  
MILWAUKEE AVENUE



REVISIONS	
NAME	DATE

ILLINOIS DEPARTMENT OF TRANSPORTATION  
**MILWAUKEE AVENUE**  
**DRAINAGE AND UTILITY**  
 STA 19+09 TO STA 23+58  
 WILLOW ROAD  
 OVER US 45/IL 21 (MILWAUKEE AVE)  
 AND OVER DES PLAINES RIVER

DATE: JANUARY 2005  
 DRAWN BY: CADD  
 CHECKED BY: PJM

07/12/2005 03:51:02 PM