

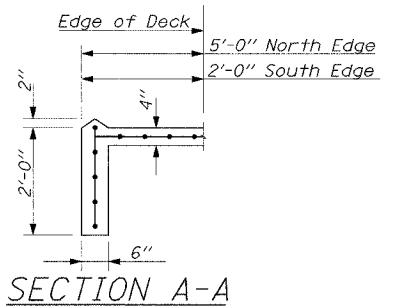
12/28/2004 04:40:5 PM

**GENERAL NOTES**

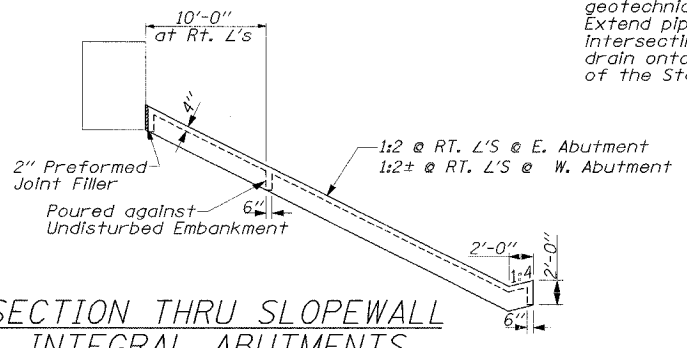
- Fasteners shall be high strength bolts. Bolts 1/2" Ø, open holes 1/8" Ø, unless otherwise noted.
- Calculated weight of structural steel:  
Grade 50 = 473,275 lbs.  
Grade 36 = 31,438 lbs.
- Field welding of construction accessories will not be permitted to beams or girders.
- Anchor bolts shall be set before bolting diaphragms over supports.
- The main load carrying member components subject to tensile stress shall conform to the Supplemental Requirements for Notch Toughness Zone 2. These components are the plate girder flanges and web and all splice plate material except fill plates.
- Reinforcement bars shall conform to the requirements of AASHTO M31 or M322 Grade 60.
- The contractor shall drive (1) HP 12x53 test pile at a permanent location at each abutment and at the pier (total 3) as directed by the Engineer before ordering the remainder of piles.
- Bearing seat surfaces shall be constructed or adjusted to the designated elevations within a tolerance of 1/8 inch. Adjustment shall be made either by grinding the surface or by shimming the bearing. Two 1/8" adjusting shims, of the dimensions of the bottom bearing plate, shall be provided for each bearing in addition to all other plates or shims.
- Slope wall shall be reinforced with welded wire fabric, 6"x6" - W4.0xW4.0, weighing 58 lbs. per 100 sq. ft.
- The inorganic zinc rich primer / Acrylic / Acrylic Paint System shall be used for shop and field painting of new structural steel except where otherwise noted. The color of the final finish coat for all interior steel surfaces shall be gray, Munsell No. 5B7/L. The color of the final finish coat for the exterior and bottom flange of the fascia beams shall be reddish brown, Munsell No. 2.5YR3/4. See Special Provision for "Cleaning and Painting New Metal Structures". Shop coat has been applied under a separate contract. Contractor of this contract (62829) is responsible for repair of field damage to the shop coat. Field coat will be applied under a separate contract.
- The existing structural steel coating contains lead. The Contractor shall take appropriate precautions to deal with the presence of lead on this project.
- All construction joints shall be bonded.

STATE OF ILLINOIS  
DEPARTMENT OF TRANSPORTATION

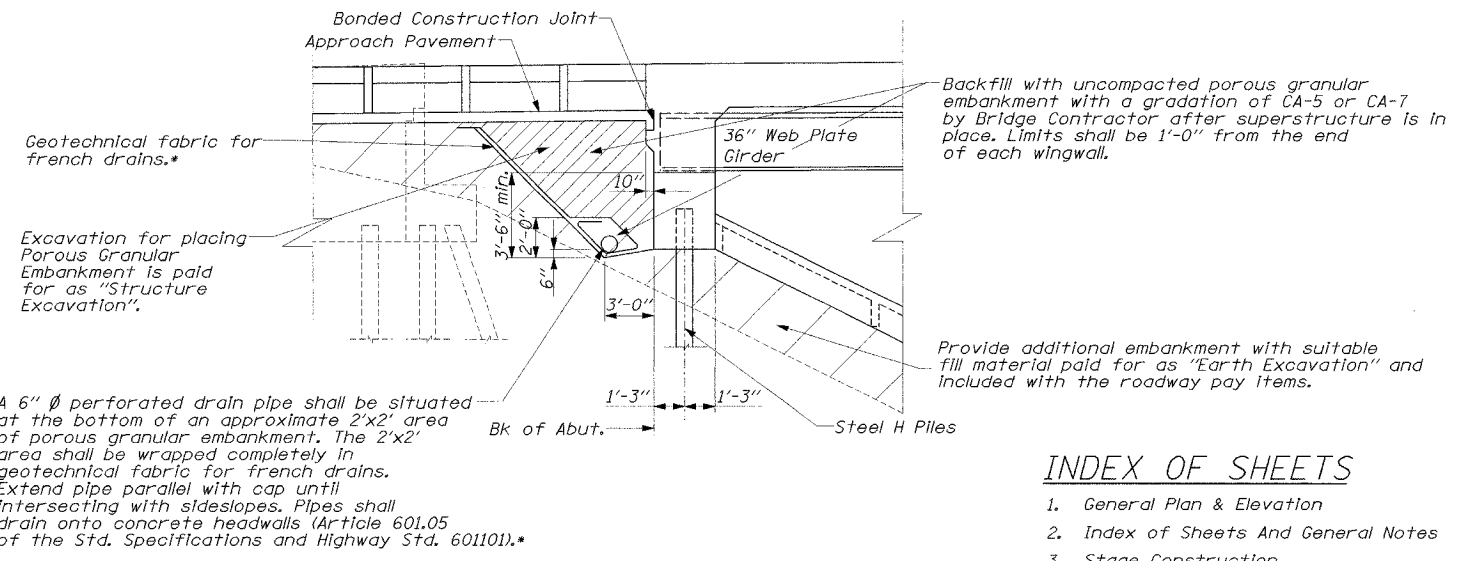
CONTRACT 62829	F.A.P. NO.	SECTION	COUNTY	TOTAL SHEETS	SHEET NO.
	305	2004-088B	COOK	145	55
	FED. ROAD DIST. NO. 1	ILLINOIS	FED. AID PROJECT-		



**SECTION A-A**



**SECTION THRU SLOPEWALL INTEGRAL ABUTMENTS**



**SECTION THRU INTEGRAL ABUTMENT**

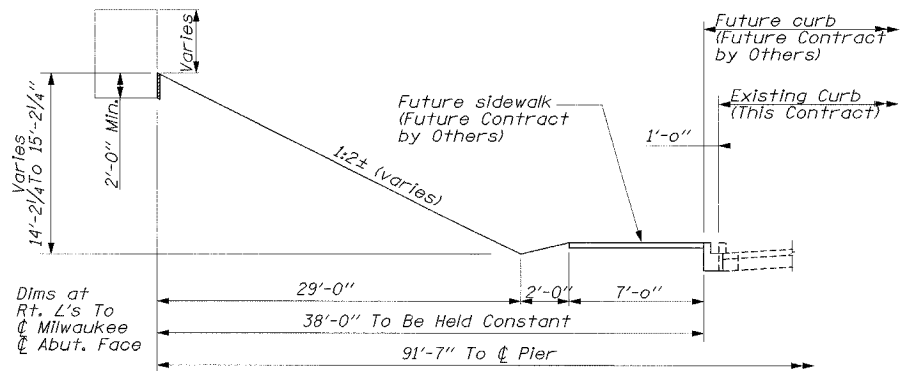
\*Included in the cost of "Porous Granular Embankment".

**INDEX OF SHEETS**

- General Plan & Elevation
- Index of Sheets And General Notes
- Stage Construction
- Substructure Layout
- Top of Slab Elevations I
- Top of Slab Elevations II
- Top of Slab Elevations III
- Superstructure (Deck) I
- Superstructure (Deck) II
- Superstructure Details (Barrier)
- Framing Plan
- Structural Steel - Girder Elevation
- Bearing Details
- West Abutment
- West Abutment Details
- East Abutment
- East Abutment Details
- West & East Abutment Diaphragm Details
- Pier
- Pier Details
- Temporary Barrier
- Drainage Details
- Anchor Bolt Details
- Bar Splicer Details
- Boring Logs I
- Boring Logs II
- Boring Logs III
- Boring Logs IV
- Boring Logs V
- Boring Logs VI

**TOTAL BILL OF MATERIALS**

ITEM	UNIT	SUPER	SUB	TOTAL
Removal of Existing Structures	Each	1		1
Structure Excavation	Cu. Yd.		270	270
Concrete Structures	Cu. Yd.		263	263
Concrete Superstructure	Cu. Yd.	544		544
Protective Coat	Sq. Yd.	2,230		2,230
Erecting Structural Steel	L. Sum	0.7		0.7
Stud Shear Connectors	Each	8,064		8,064
Reinforcement Bars, Epoxy Coated	Pound	120,790	37,340	158,130
Bar Splicers	Each	1241	68	1309
Furnishing Steel Piles HP 12x53	Foot		3,544	3,544
Driving Steel Piles	Foot		3,544	3,544
Test Pile Steel HP 12x53	Each		3	3
Temporary Sheet Piling	Sq. Ft.		1,100	1,100
Protective Shield	Sq. Yd.	851		851
Name Plates	Each	1		1
Bridge Seat Sealer	Sq. Ft.		222	222
Porous Granular Embankment	Cu. Yd.		451	451
Drainage Scuppers, DS-33	Each	4		4
Bridge Deck Grooving	Sq. Yd.	1,820		1,820
Slope Wall, 4 Inch	Sq. Yd.		720	720
Braced Excavation	Cu. Td.		260	260



**WEST ABUTMENT SLOPEWALL DETAILS**

DESIGNED	AJN
CHECKED	JAP
DRAWN	ABW
CHECKED	EL

**INDEX OF SHEETS AND GENERAL NOTES**  
WILLOW ROAD OVER MILWAUKEE AVENUE (IL RTE. 21/U.S. 45)  
F.A.P. RTE. 305  
SECTION 2004-088B  
COOK COUNTY  
STA. 391+71.02 @ WILLOW RD.  
STR. NO. 016-2786

EDWARDS AND KELCEY

P:\0000\9214\adv\Contract\Adv\Structural\Title-Plans\adv\lw-02.dwg