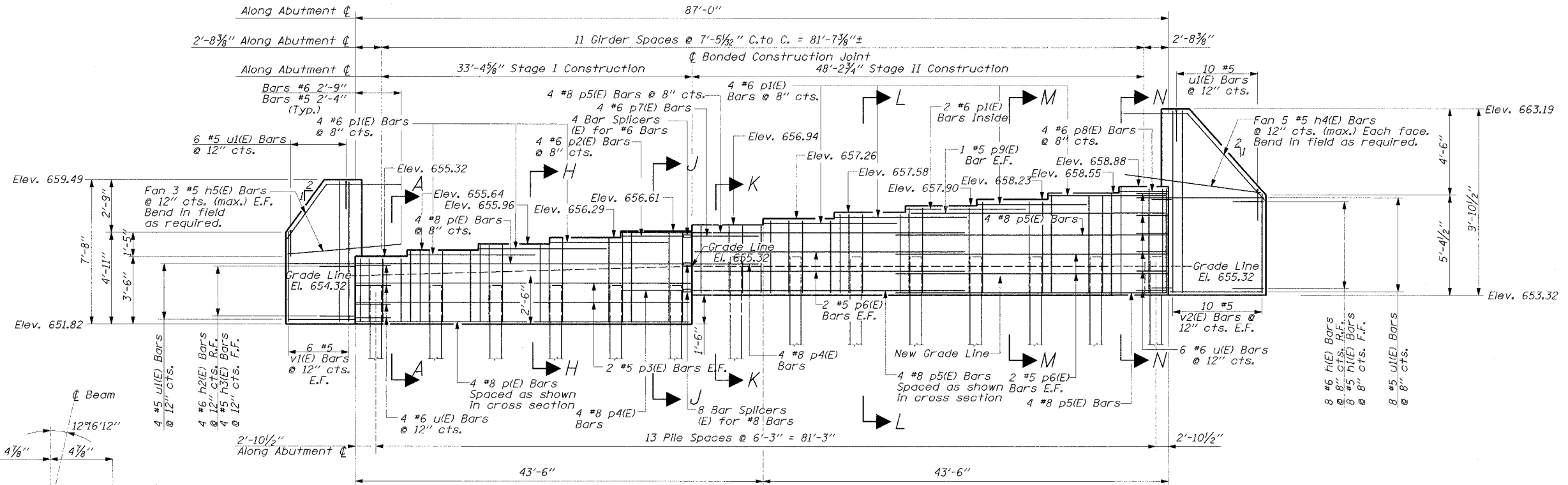


STATE OF ILLINOIS
DEPARTMENT OF TRANSPORTATION

CONTRACT 62829

F.A.P. DIST. NO.	SECTION	COUNTY	TOTAL SHEETS	SHEET NO.
305	2004-088B	COOK	145	69
FED. ROAD DIST. NO. 1	ALIGNMENT	FED. AID PROJECT		

SHEET NO. SA-16
OF SHEETS SA-30

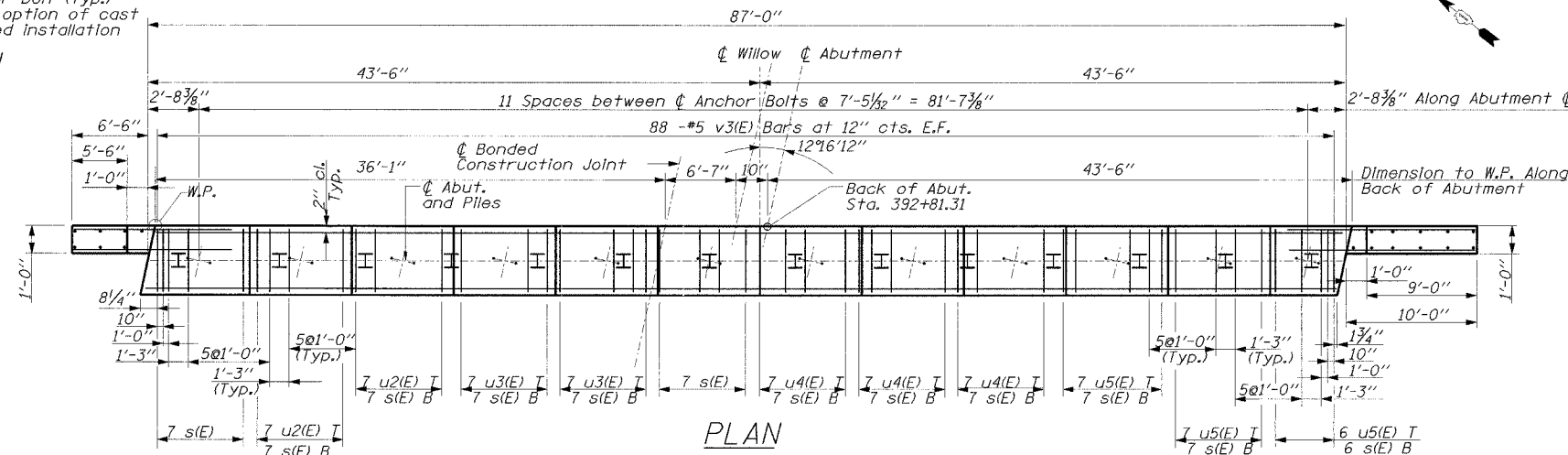
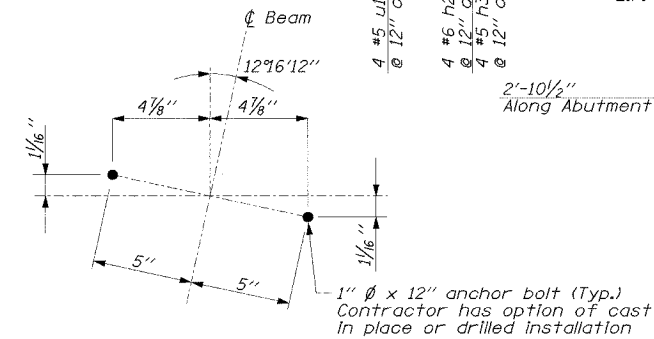


ELEVATION
(Looking East)

PILE DATA

Type: HP12x53
Capacity: 55 Ton driven to 84 Ton bearing
Est. Length: 72'
No. Required: 14
Test Piles: 1
Drive test pile to 95 Ton bearing

ANCHOR BOLT LAYOUT PLAN



PLAN

NOTES:

1. Pour steps monolithically with cap.
2. Reinforcement Bars designated (E) Shall be epoxy coated.
3. Min. bar lap for #4 bar = 1'-8"
Min. bar lap for #5 bar = 2'-2"
Min. bar lap for #6 bar = 2'-7"
Min. bar lap for #8 bar = 4'-6"
4. Grade line elevation = Top of slope wall At front face of abutment.

NOTATION:

F.F. - Front Face
R.F. - Rear Face
E.F. - Each Face
T - Top
B - Bottom

DESIGNED	AJN
CHECKED	JAP
DRAWN	ABW
CHECKED	EL

EAST ABUTMENT
WILLOW ROAD OVER
MILWAUKEE AVENUE
(IL RTE. 21/U.S. 45)
F.A.P. RTE. 305
SECTION 2004-088B
COOK COUNTY
STA. 391+71.02 & WILLOW RD.
STR. NO. 016-2786

EDWARDS AND KELCEY