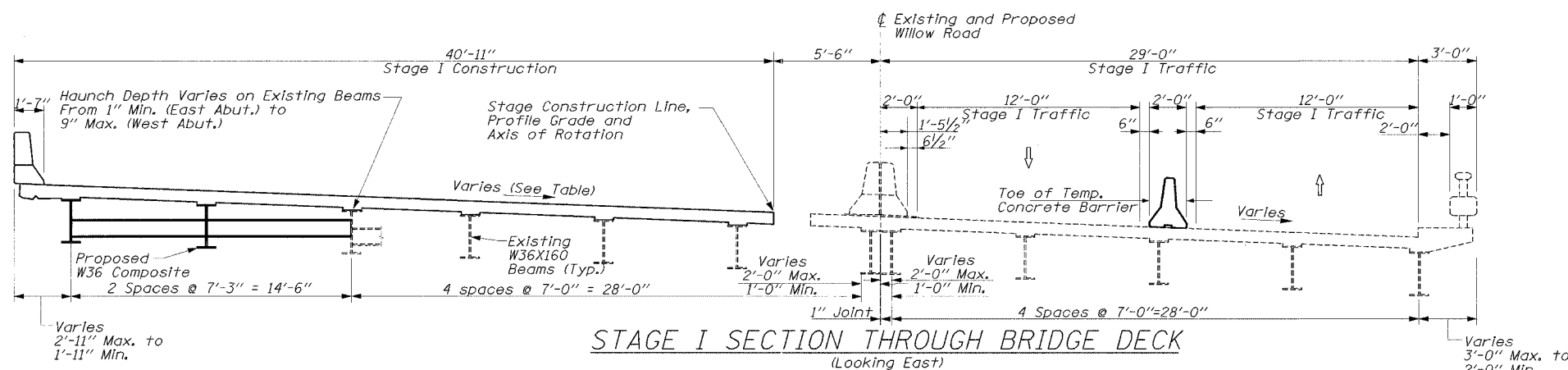


STATE OF ILLINOIS
DEPARTMENT OF TRANSPORTATION

CONTRACT 62829	F.A.P. RTE. NO.	SECTION	COUNTY	TOTAL SHEETS	SHEET NO.
	305	2004-088B	COOK	145	86
	FED. ROAD DIST. NO. 1	ALLIANCE	FED. AID PROJECT		

SHEET NO. SB-3
OF SHEETS SB-44

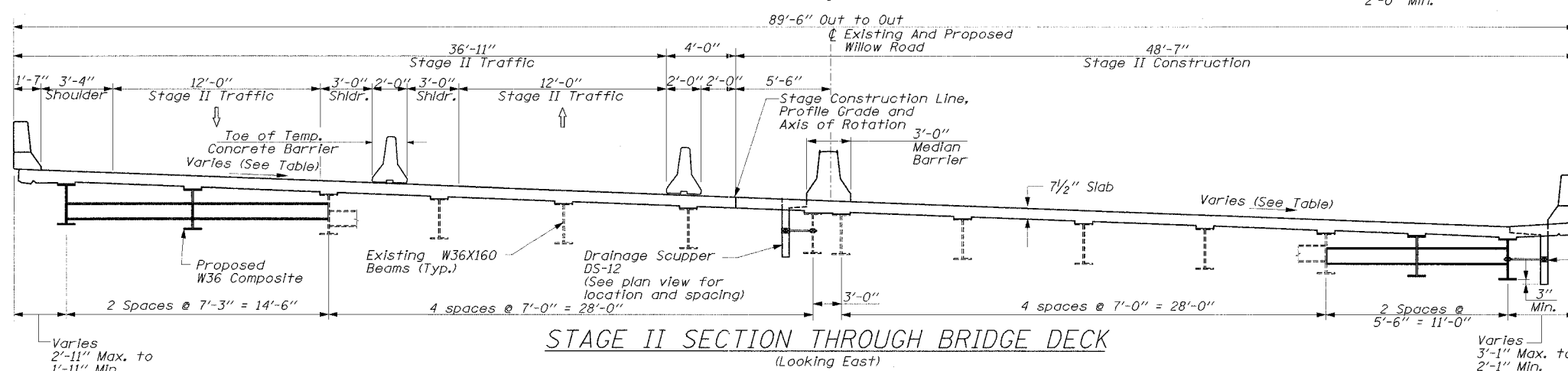


STAGE I SECTION THROUGH BRIDGE DECK
(Looking East)

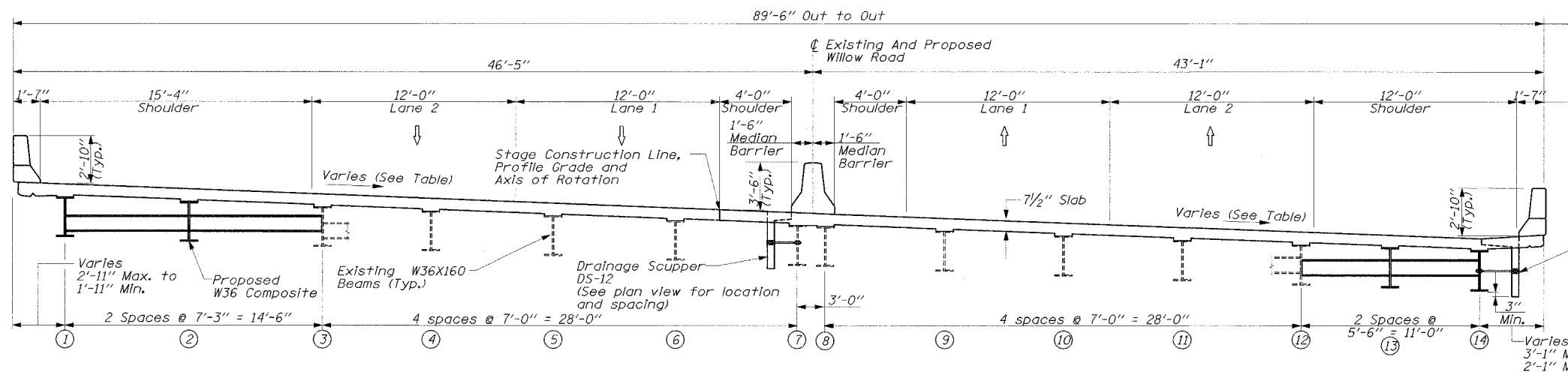
DECK SUPERELEVATIONS	
Sta. 394+55.06	4.5%
Sta. 396+52.06	0.0%
Sta. 398+16.06	4.0%

(Looking East)

Note: P.G.L. is also Axis of Rotation. Transitions are linear between stations.



STAGE II SECTION THROUGH BRIDGE DECK
(Looking East)



TYPICAL SECTION THROUGH BRIDGE DECK
(Looking East)

Tangent from Sta. 396+40.06 to Sta. 397+43.50
Radial from Sta. 397+43.50 to Sta. 399+11.35

NOTE:

- See Drawing RSE-1 (Roadway Plans) for Additional SE Transition Details.
- Structural Stage I corresponds to Stage II in the Roadway Plans. Structural Stage II corresponds to Stage III in the Roadway Plans. Coordinate with MOT-3 through MOT-6.
- Beam spacing @ Rt L's to center line of beams is as shown from the West Abutment to Field Splice 2 (Bend Point). For spacing from Field Splice 2 to the East Abutment see Sheet SB-12.

CONSTRUCTION STAGING
WILLOW ROAD OVER
DES PLAINES RIVER
F.A.P. RTE. 305
SECTION 2004-088B
COOK COUNTY
STA. 397+76.18
STR. NO. 016-0530

EDWARDS AND KELCEY

DESIGNED	EL
CHECKED	JAS
DRAWN	ABW
CHECKED	EL

01/12/2005 01:42:14 PM

I:\00016214\cadd\Advance_Contract\Adv_Structure\Des\Planes-Pin_Sel.dwg-plns03.dwg