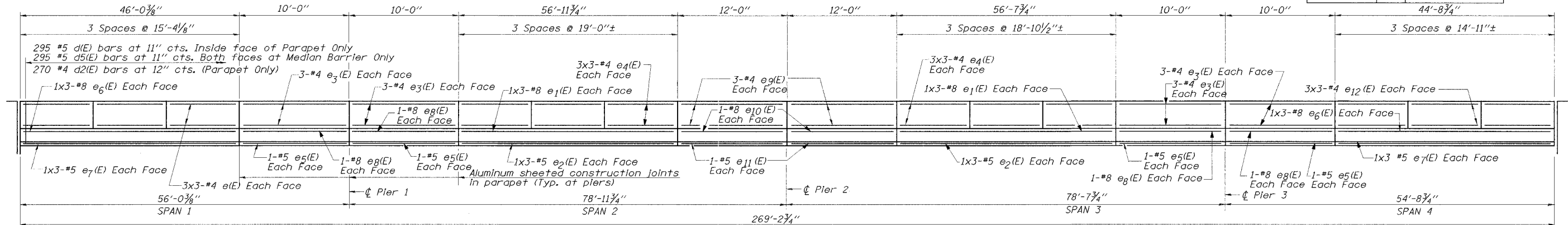


STATE OF ILLINOIS  
DEPARTMENT OF TRANSPORTATION

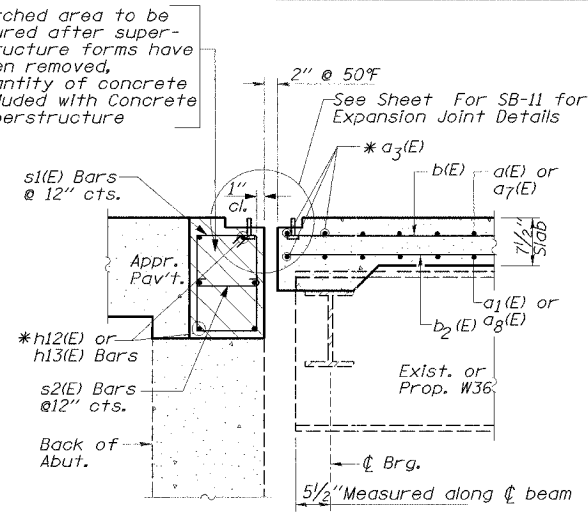
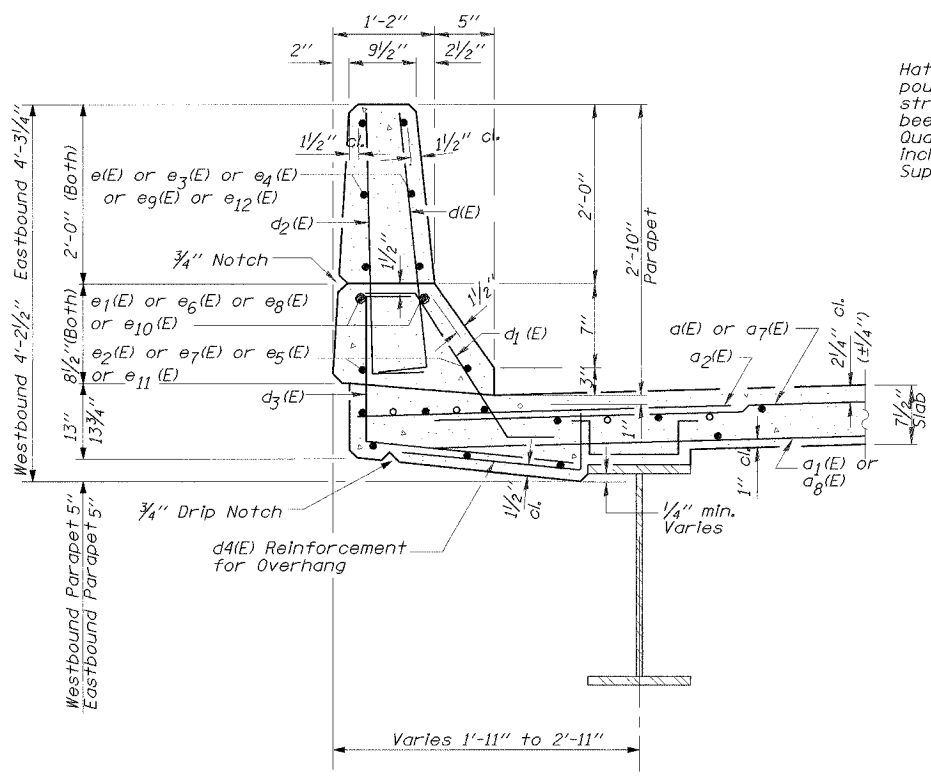
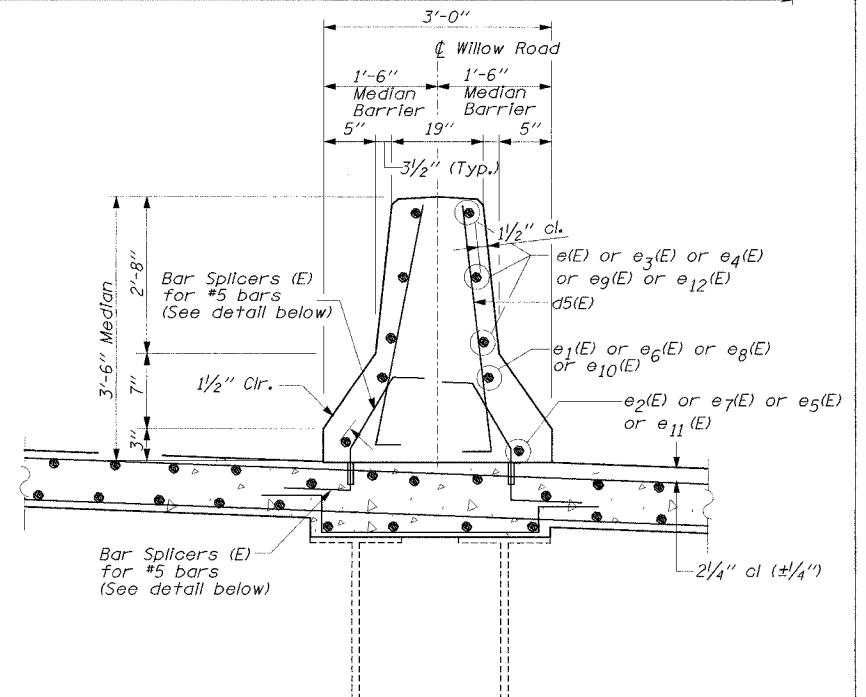
CONTRACT 62829	F.A.P. RTE. NO. 305	SECTION 2004-088B	COUNTY COOK	TOTAL SHEETS 145	SHEET NO. 93	SHEET NO. SB-10 OF SHEETS SB-44
----------------	------------------------	----------------------	----------------	---------------------	-----------------	------------------------------------



INSIDE ELEVATION OF PARAPET  
AND MEDIAN BARRIER

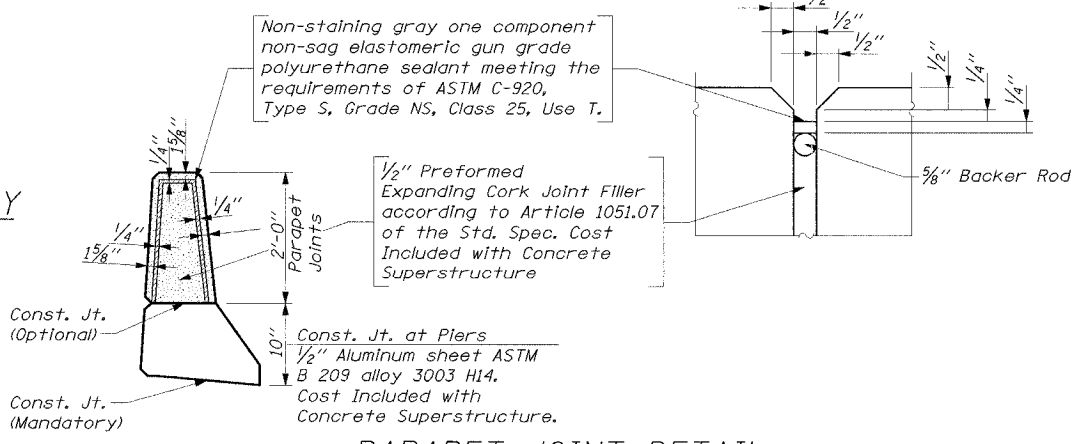
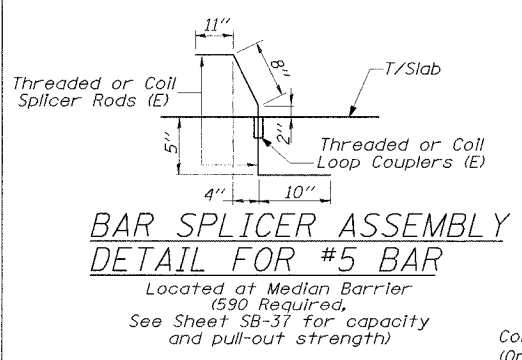
SUPERSTRUCTURE  
BILL OF MATERIAL

Bar	No.	Size	Length	Shape
a(E)	984	#5	22'-0"	—
a1(E)	1107	#5	14'-9"	—
a2(E)	540	#6	4'-0"	—
a3(E)	8	#7	22'-6"	—
a5(E)	8	#5	26'-9"	—
a7(E)	984	#5	25'-0"	—
a8(E)	1107	#5	18'-0"	—
a9(E)	64	#5	2'-0"	—
a10(E)	6	#7	16'-3"	—
a11(E)	6	#7	18'-10"	—
b(E)	920	#5	28'-11"	—
b1(E)	540	#6	15'-6"	—
b2(E)	1242	#5	26'-5"	—
b3(E)	270	#6	17'-6"	—
d(E)	590	#5	3'-0"	—
d1(E)	590	#5	2'-5"	—
d2(E)	540	#4	3'-0"	—
d3(E)	540	#4	3'-11"	—
d4(E)	540	#4	2'-10"	—
d5(E)	590	#5	3'-8"	—
e(E)	54	#4	15'-6"	—
e1(E)	36	#8	21'-0"	—
e2(E)	36	#5	21'-0"	—
e3(E)	72	#4	9'-8"	—
e4(E)	108	#4	18'-7"	—
e5(E)	24	#5	9'-8"	—
e6(E)	36	#8	17'-6"	—
e7(E)	36	#5	17'-6"	—
e8(E)	24	#8	9'-8"	—
e9(E)	36	#4	11'-8"	—
e10(E)	12	#8	11'-8"	—
e11(E)	12	#5	11'-8"	—
e12(E)	54	#4	14'-6"	—
s6(E)	1200	#5	4'-4"	—
s7(E)	100	#5	5'-4"	—
s8(E)	175	#5	6'-4"	—
Reinforcement Bars Epoxy Coated	Pound		196,300	
Concrete Superstructure	Cu. Yds.		725	
Bar Splicers	Each		1457	

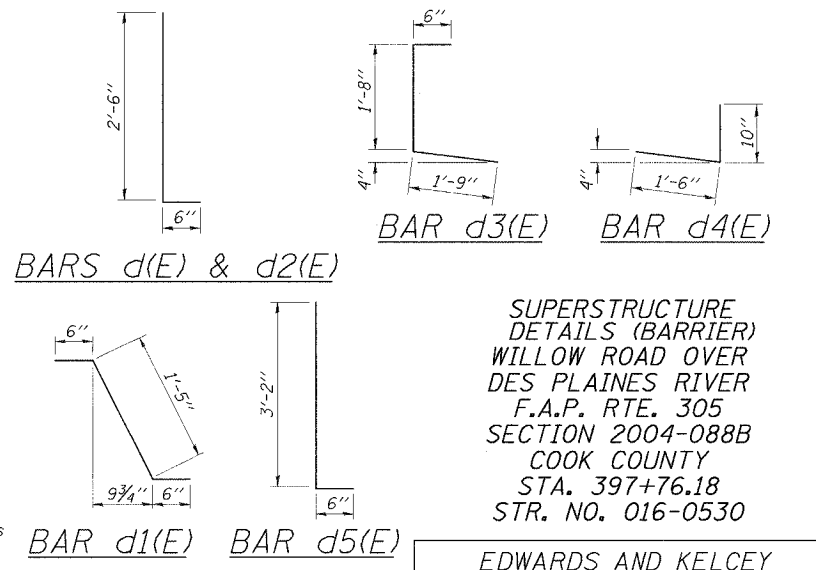


SECTION A-A

\* Place a3(E) Bars and h12(E) or h13(E) Bars in back of anchor bolt as shown if required to maintain 1" cl. (±0'-1/8"). Anchor bolts shall be tied to a3(E) Bars and h12(E) or h13(E) Bars. Hatched area bars are included in Abutment Bill of Material



PARAPET JOINT DETAIL  
(Median Joints Similar)



SUPERSTRUCTURE  
DETAILS (BARRIER)  
WILLOW ROAD OVER  
DES PLAINES RIVER  
F.A.P. RTE. 305  
SECTION 2004-088B  
COOK COUNTY  
STA. 397+76.18  
STR. NO. 016-0530

EDWARDS AND KELCEY

DESIGNED	EL
CHECKED	JAS
DRAWN	ABW
CHECKED	EL

12/28/2004 03:03:45 PM P:\000019\4\cand\Advence\Conf\04\Adv\Struc\04\Des\Plains-Plan\_Sch\des\jris04.dwg