

12/28/2004 10:47:31 AM

STATE OF ILLINOIS
DEPARTMENT OF TRANSPORTATION

CONTRACT 62829

F.A.P. NO.	DISTRICT	COUNTY	TOTAL SHEETS	SHEET NO.
305	2004-088B	COOK	145	94
FED. ROAD DIST. NO. 1	F.I. PROJECT	FED. AID PROJECT		

SHEET NO. SB-11
OF SHEETS SB-4

Joint Size	"C" at 50°F	"D" at 50°F
2"	2"	1 1/2" Min.
2 1/2"	2 1/2"	1 3/4" Min.
4"	3"	2 1/2" Min.

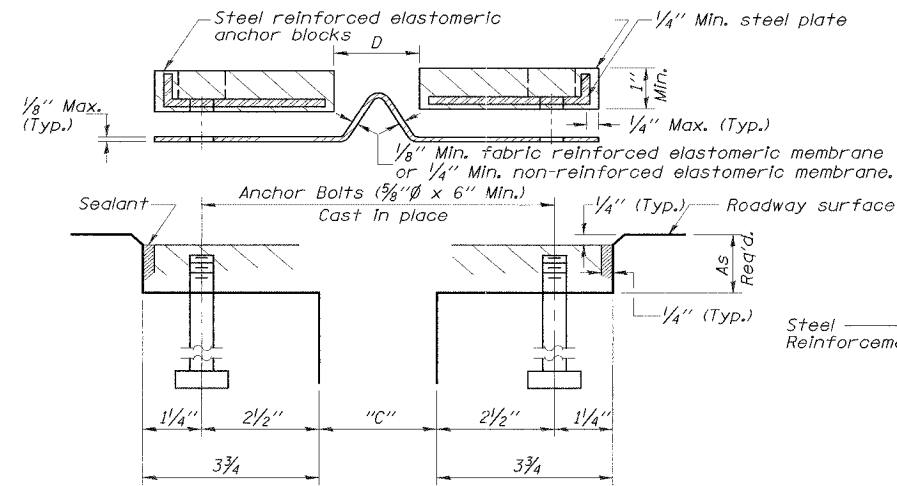
INSTALLATION NOTES

- 1 Install continuous seal in roadway, parapet, curb, and sidewalk.
- 2 Install anchor blocks as indicated.

NOTE A: Maximum spacing of anchor bolts shall be 12" centers.

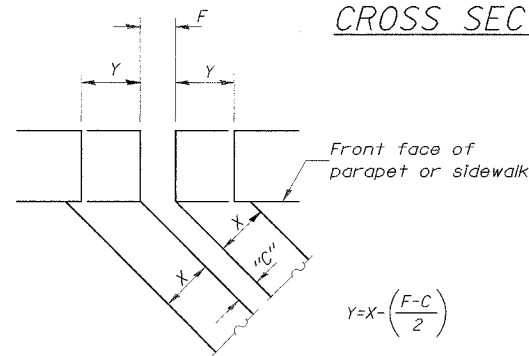
SKEW LIMITATIONS

The details of the anchor blocks and the elastomeric membrane in the parapet, as shown, are for up to 50° skews. For skews greater than 50°, the anchor blocks and the elastomeric membrane, installed according to dimension "D", might require modifications to insure a minimum clearance of 1/2" from centerline of anchor studs to edge of parapet opening. The anchor blocks and the elastomeric membrane shall also be installed to the top of the parapet with the anchor studs spaced at ±12" cts.



CROSS SECTION

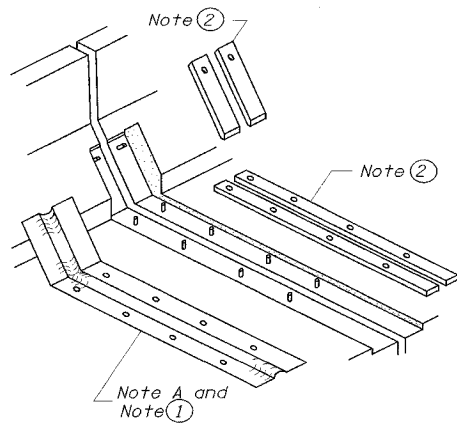
ANCHOR BLOCK WITH ASPHALT SURFACE



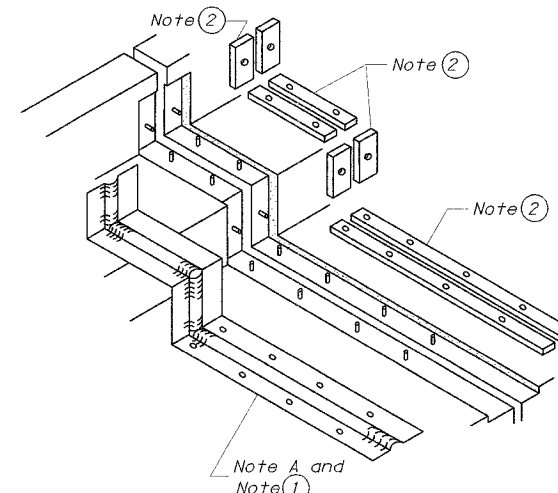
FORMING BLOCKOUT SKETCH

$$Y = X - \left(\frac{F - C}{2} \right)$$

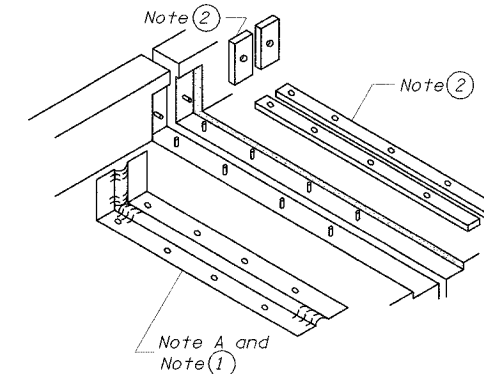
For dimension "F" see sheet SB-8



AT PARAPET



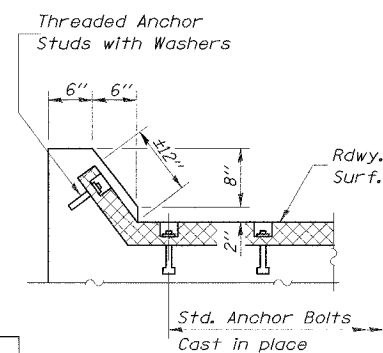
AT SIDEWALK OR MEDIAN



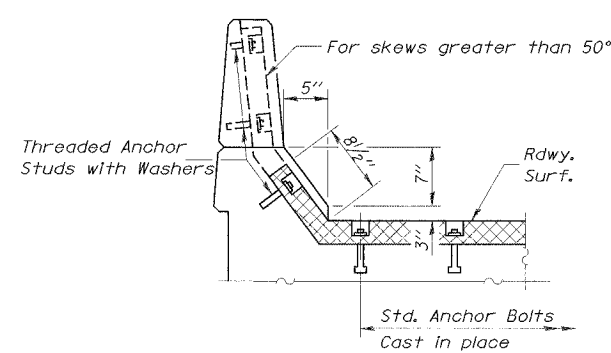
AT WALL

BILL OF MATERIAL

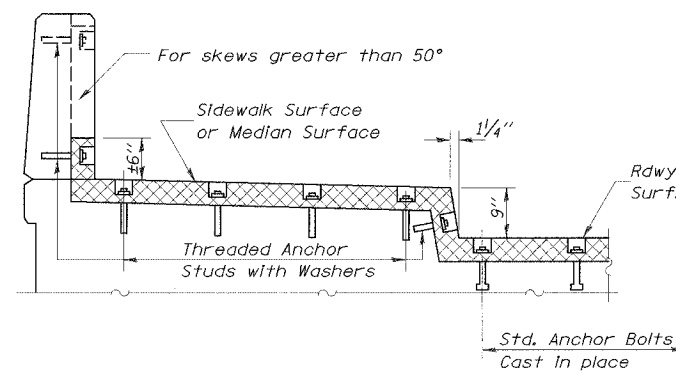
Item	Unit	Total
Neoprene Expansion Joint, 2"	Foot	190



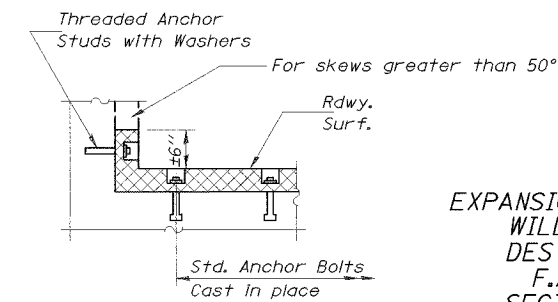
AT CURB



AT PARAPET



**AT SIDEWALK OR MEDIAN
TYPICAL END TREATMENTS**



AT WALL

EXPANSION JOINT DETAILS
WILLOW ROAD OVER
DES PLAINES RIVER
F.A.P. RTE. 305
SECTION 2004-088B
COOK COUNTY
STA. 397+76.18
STR. NO. 016-0530

EDWARDS AND KELCEY

DESIGNED	EL
CHECKED	JAS
DRAWN	ABW
CHECKED	EL

EJ-CS 9-01-03

F:\020019\04\04\04\Adv\Contract\Adv\Structural\Drawings\Plan_S&S\sb-11.dwg