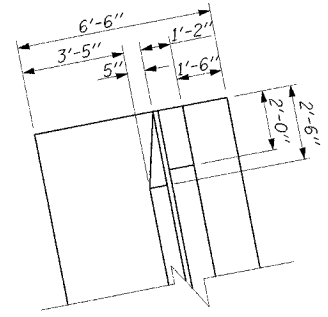
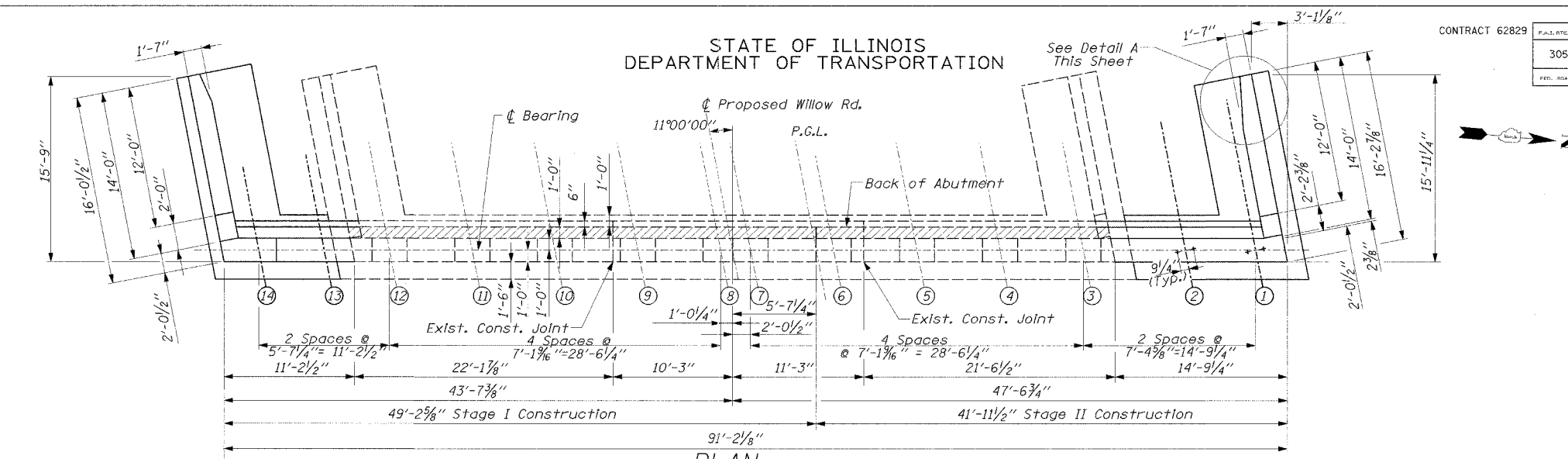


10/19/09 AM  
01/17/2005

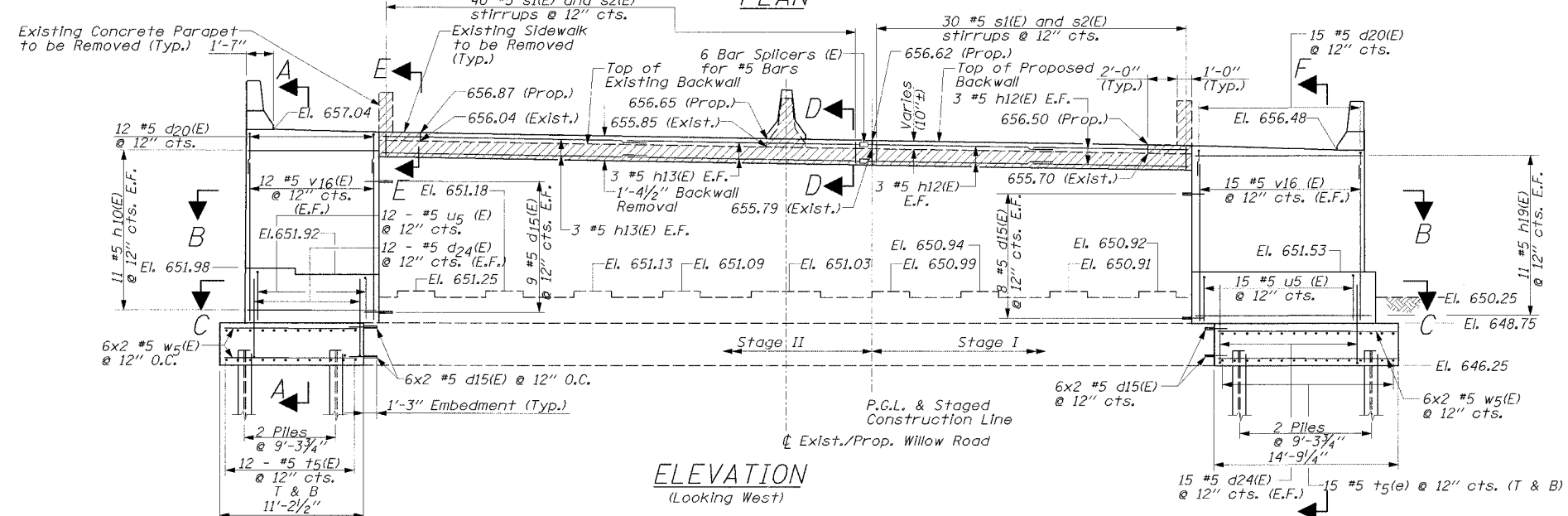
STATE OF ILLINOIS  
DEPARTMENT OF TRANSPORTATION

CONTRACT 62829	F.A.P. RTE. NO. 305	SECTION 2004-088B	COUNTY COOK	TOTAL SHEETS 145	SHEET NO. 102
	FED. ROAD DIST. NO. 1	ILLINOIS	FED. AID PROJECT		

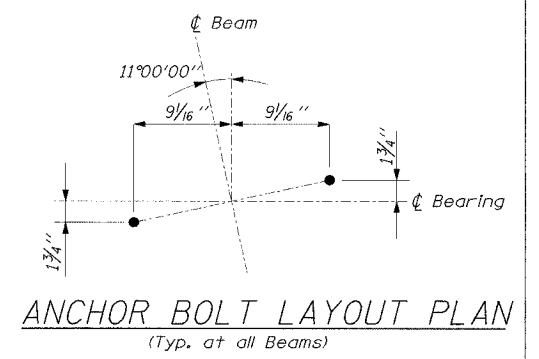
SHEET NO. SB-19  
OF SHEETS SB-14



DETAIL A



ELEVATION  
(Looking West)



ANCHOR BOLT LAYOUT PLAN  
(Typ. at all Beams)

NOTES:

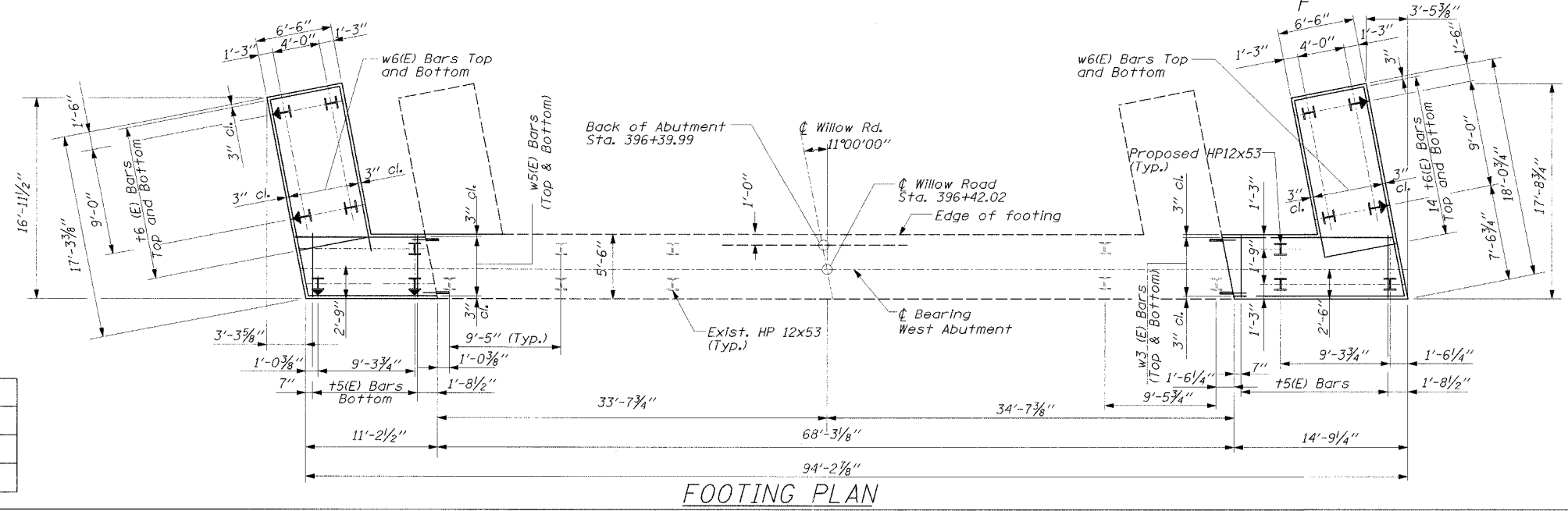
1. See Sheet SB-22 for Bill of Materials. Work with sheets SB-20 Through SB-22.
2. Epoxy grout d15(E) bars in drilled holes according to Article 584 of the Standard Specifications. Space drilled holes to miss existing reinforcement.
3. Space reinforcement in cap to miss anchor bolts.
4. Pour steps monolithically with cap.

NEW PILE DATA

Type: HP 12x53  
Capacity: 30 Tons (Driven to 45 Tons)  
Drive test pile to 55 Ton bearing  
Estimated Length: 50' South End  
54' North End  
No. Required: 14 (Including 1 Test Pile)

LEGEND

- Existing Pile
- Vertical Pile
- Battered Pile (Batter 4" in 12" in direction of arrow)
- Concrete Removal



FOOTING PLAN

DESIGNED	EL
CHECKED	JAS
DRAWN	ABW
CHECKED	EL

WEST ABUTMENT  
WILLOW ROAD OVER  
DES PLAINES RIVER  
F.A.P. RTE. 305  
SECTION 2004-088B  
COOK COUNTY  
STA. 397+76.18  
STR. NO. 016-0530

EDWARDS AND KELCEY