

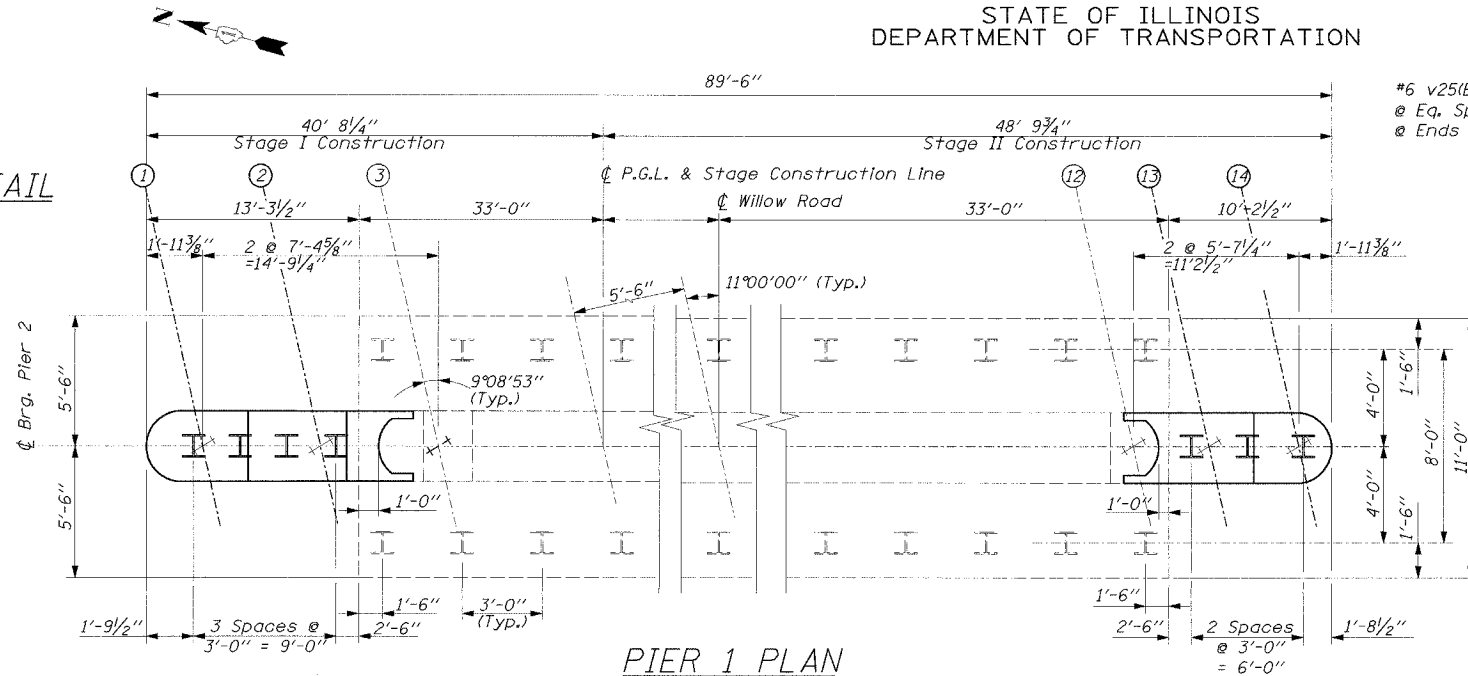
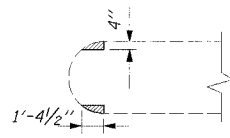
STATE OF ILLINOIS
DEPARTMENT OF TRANSPORTATION

CONTRACT 62829

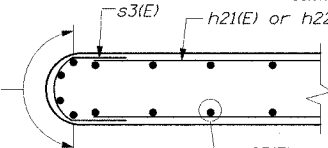
F.A.L. RTE. NO.	SECTION	COUNTY	TOTAL SHEETS	SHEET NO.
305	2004-088B	COOK	145	110
FED. ROAD DIST. NO. 1	ILLINOIS	FED. AID PROJECT-		

SHEET NO. SB-27
OF SHEETS SB-44

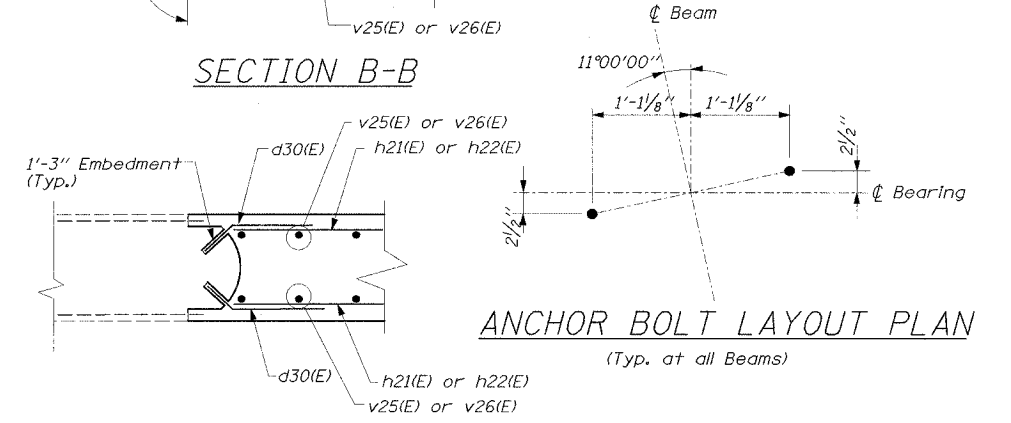
REMOVAL DETAIL



PIER 1 PLAN

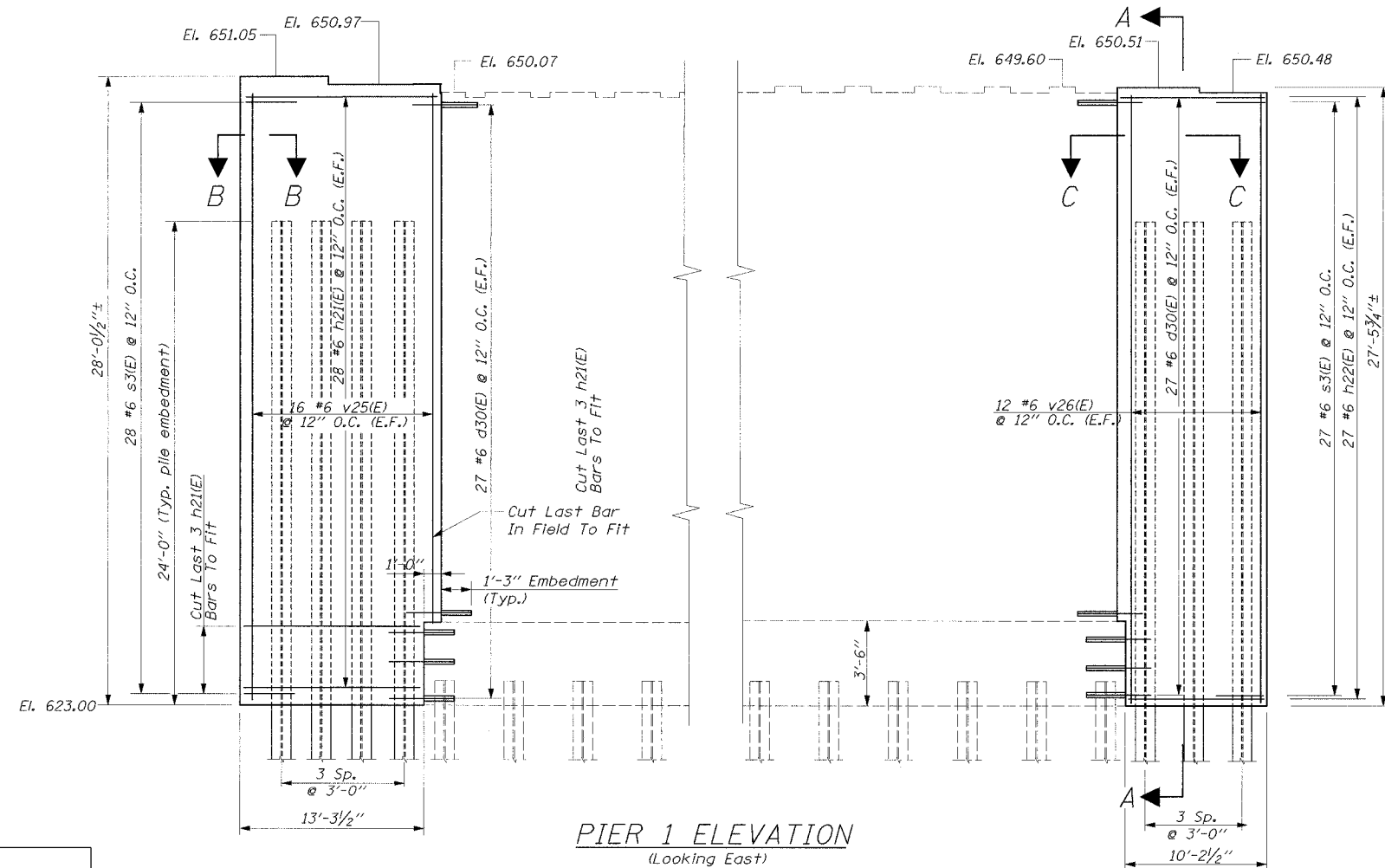


SECTION B-B

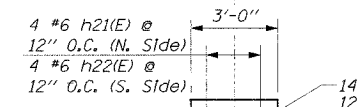


ANCHOR BOLT LAYOUT PLAN
(Typ. at all Beams)

SECTION C-C



PIER 1 ELEVATION
(Looking East)



SECTION A-A

BILL OF MATERIAL

Bar	No	Size	Length	Shape	
d30(E)	108	#6	2'-6"	—	
h21(E)	60	#6	14'-0"	—	
h22(E)	58	#6	11'-0"	—	
s3(E)	55	#6	9'-8"	—	
u15(E)	26	#6	4'-8"	—	
v25(E)	32	#6	27'-3"	—	
v26(E)	24	#6	27'-0"	—	
Reinforcement Bars, Epoxy Coated				Lbs.	5890
Concrete Structures				Cu. Yd.	75
Structure Excavation				Cu. Yd.	115
Furnishing Steel Piles HP 12x53				Foot	411
Test Pile Steel HP12x53				Each	1
Driving Steel Piles				Foot	411

PILE DATA

Type = HP12x53
Capacity = 50 Ton
Driven to 75 Ton Bearing
Drive test pile to 90 Ton bearing
Est Length = 65' North end
72' South end
No. Req'd = 7 (Including 1 Test Pile)

PIER 1
WILLOW ROAD OVER
DES PLAINES RIVER
F.A.P. RTE. 305
SECTION 2004-088B
COOK COUNTY
STA. 397+76.18
STR. NO. 016-0530

NOTES:

- Epoxy grout d30(E) bars in drilled holes according to Article 584 of the Standard Specifications. Space drilled holes to miss existing reinforcement.
- Space reinforcement in cap to miss anchor bolts.
- Pour steps monolithically with cap.

DESIGNED	EL
CHECKED	JAS
DRAWN	ABW
CHECKED	EL

EDWARDS AND KELCEY