

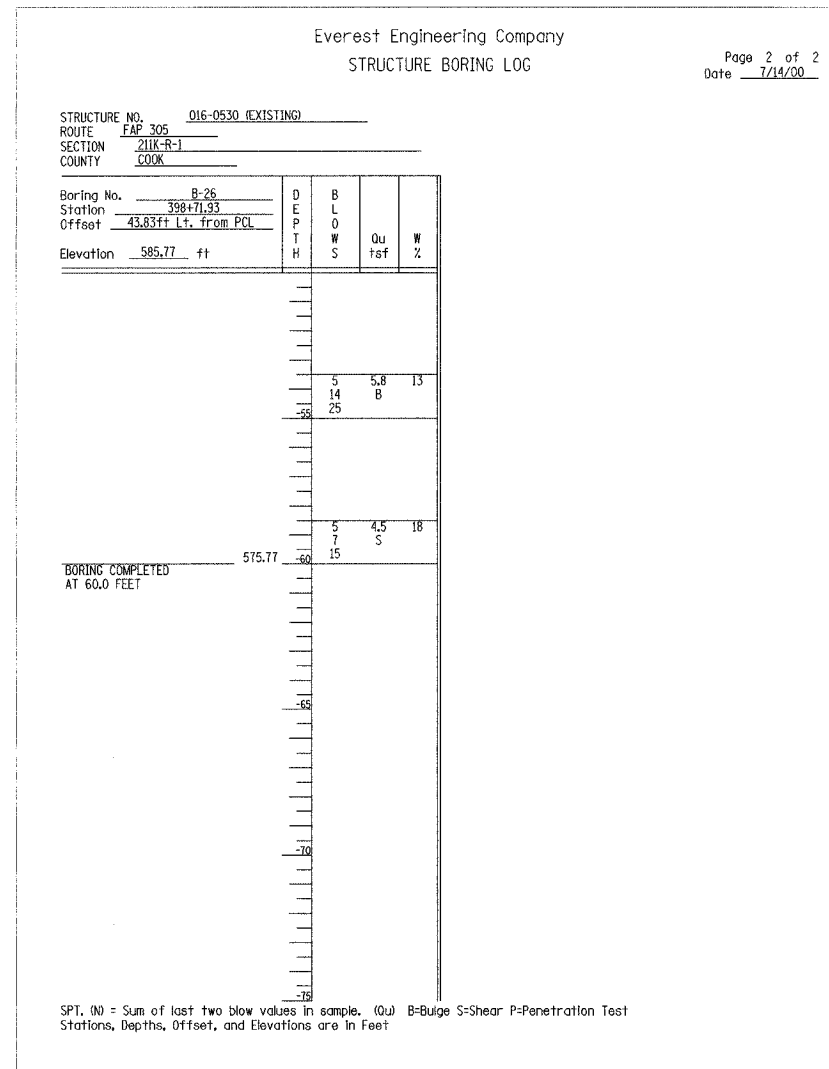
STATE OF ILLINOIS
DEPARTMENT OF TRANSPORTATION

CONTRACT 62829

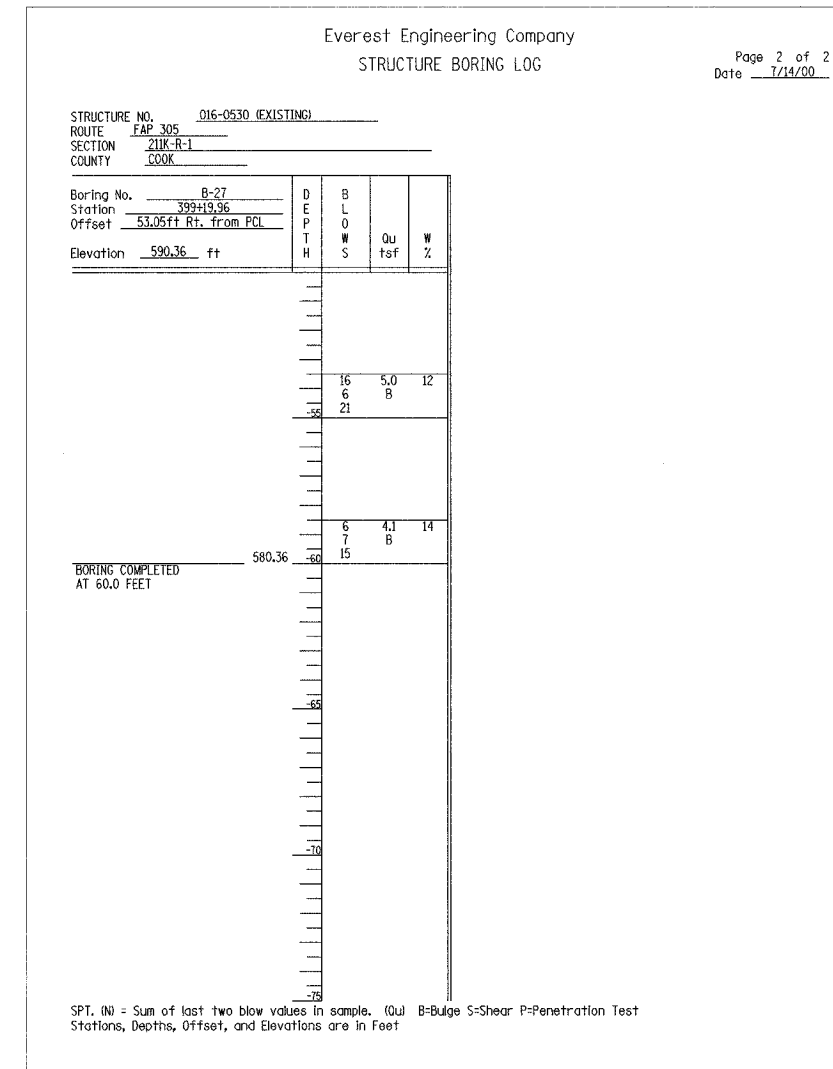
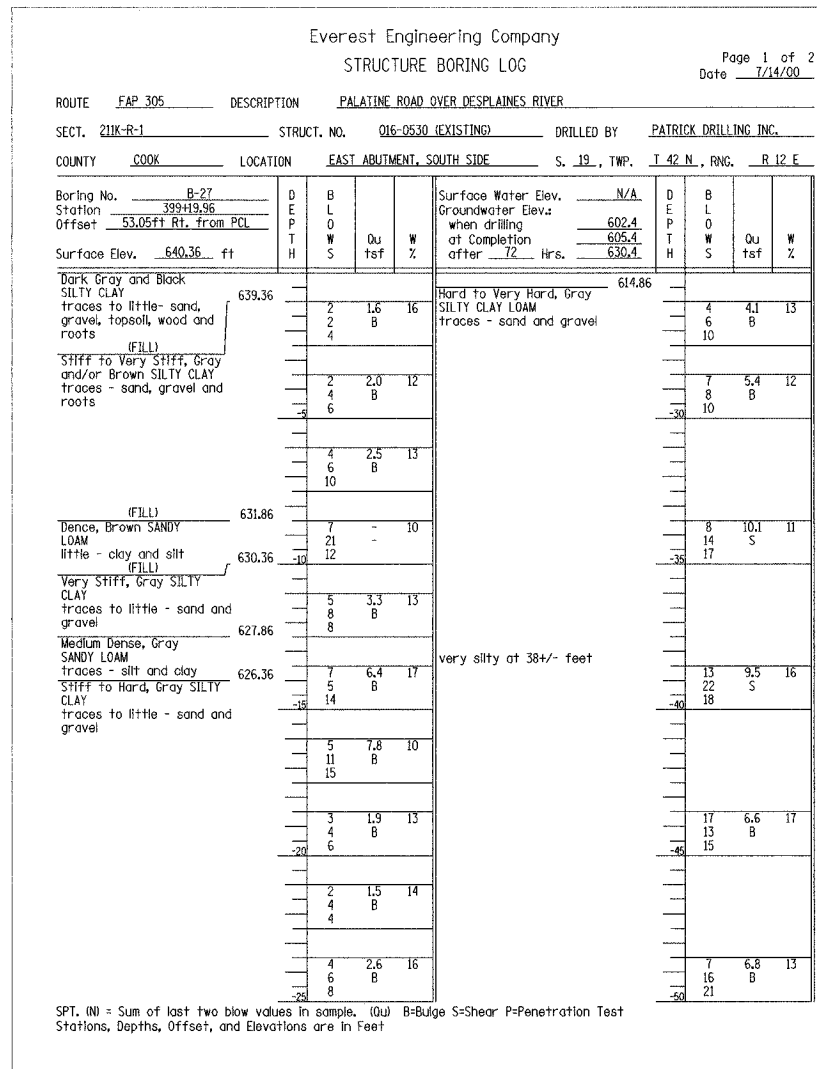
F.A.P. R.T.E. NO.	SECTION	COUNTY	TOTAL SHEETS	SHEET NO.
305	2004-088B	COOK	145	126
FED. ROAD DIST. NO. 1	ILLINOIS	FED. AID PROJECT-		

SHEET NO. SB-43
OF SHEETS SB-44

BORING B-26 (CONT.)



BORING B-27



DESIGNED	EL
CHECKED	JAS
DRAWN	ABW
CHECKED	EL

BORING LOGS VI
WILLOW ROAD OVER
DES PLAINES RIVER
F.A.P. RTE. 305
SECTION 2004-088B
COOK COUNTY
STA. 397+76.18
STR. NO. 016-0530

EDWARDS AND KELCEY

12/29/2004 10:05:56 AM

P:\000009\04\road\advance\Contract\Adv\Structural\Des\Palatines\Plan_Sat\04\05\38-44.dwg