

62849

F.A. RTE.	SECTION	COUNTY	TOTAL SHEETS	SHEET NO.
* 0913.1 RS	COOK	62	1	

* FAP 305/ FAU 1285

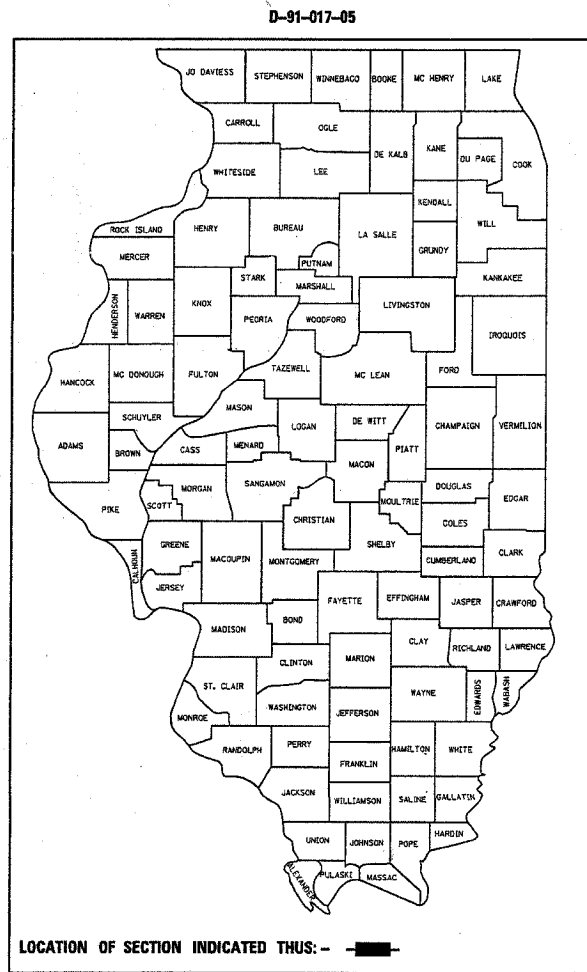
STATE OF ILLINOIS
DEPARTMENT OF TRANSPORTATION
DIVISION OF HIGHWAYS

PLANS FOR PROPOSED HIGHWAY

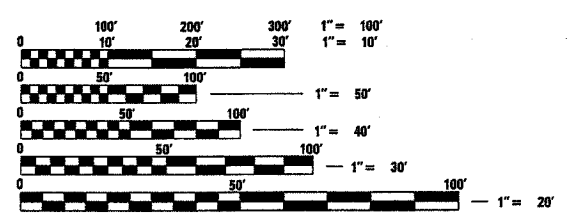
F.A.P. ROUTE 305/F.A.U. 1285 (PALATINE ROAD)
SECTION: 0913.1 RS
LIMITS: CEDAR STREET TO EAST OF US 12
RESURFACING, MEDIAN REPAIR
COOK COUNTY
C-91-017-05

FOR INDEX OF SHEETS, SEE SHEET NO. 2

IMPROVEMENT LOCATED IN THE VILLAGES OF PALATINE AND ARLINGTON HEIGHTS



TRAFFIC DATA
POSTED SPEED LIMIT = VARIES 35-45 MPH
2002 ADT = 30,600



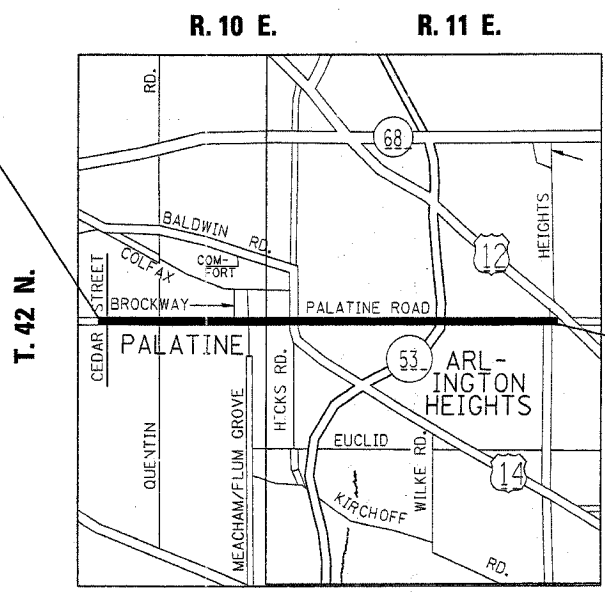
FULL SIZE PLANS HAVE BEEN PREPARED USING STANDARD ENGINEERING SCALES, REDUCED SIZED PLANS WILL NOT CONFORM TO STANDARD SCALES, IN MAKING MEASUREMENTS ON REDUCED PLANS, THE ABOVE SCALES MAY BE USED.

J.U.L.I.E.
JOINT UTILITY LOCATION INFORMATION FOR EXCAVATION
1-800-892-0123

CONTRACT NO. 62849

IMPROVEMENT BEGINS
STATION 42+87

OMISSIONS:
STA. 96+94 TO STA.104+88



PALATINE AND WHEELING TOWNSHIPS

IMPROVEMENT ENDS
STATION 253+84

GROSS LENGTH OF IMPROVEMENT = 21097 LINEAL FEET = 4.00 MILES
NET LENGTH OF IMPROVEMENT = 20303 LINEAL FEET = 3.85 MILES

STATE OF ILLINOIS
DEPARTMENT OF TRANSPORTATION
DIVISION OF HIGHWAYS

SUBMITTED December 14, 20 04
Diane O'Keefe
DEPUTY DIRECTOR OF HIGHWAYS, REGION ENGINEER

February 4, 20 05
Mike Wine
ENGINEER OF DESIGN AND ENVIRONMENT

February 4, 20 05
Victor Maderna
DIRECTOR OF HIGHWAYS, CHIEF ENGINEER

PRINTED BY THE AUTHORITY
OF THE STATE OF ILLINOIS

DISTRICT 1 DESIGN PLAN PREPARATION ENGINEER: KEN ENG /ISSAM RAYYAN (847) 705-4557

167 107 4007
c:\proj\sect\sl\2220\m\2220400.m32