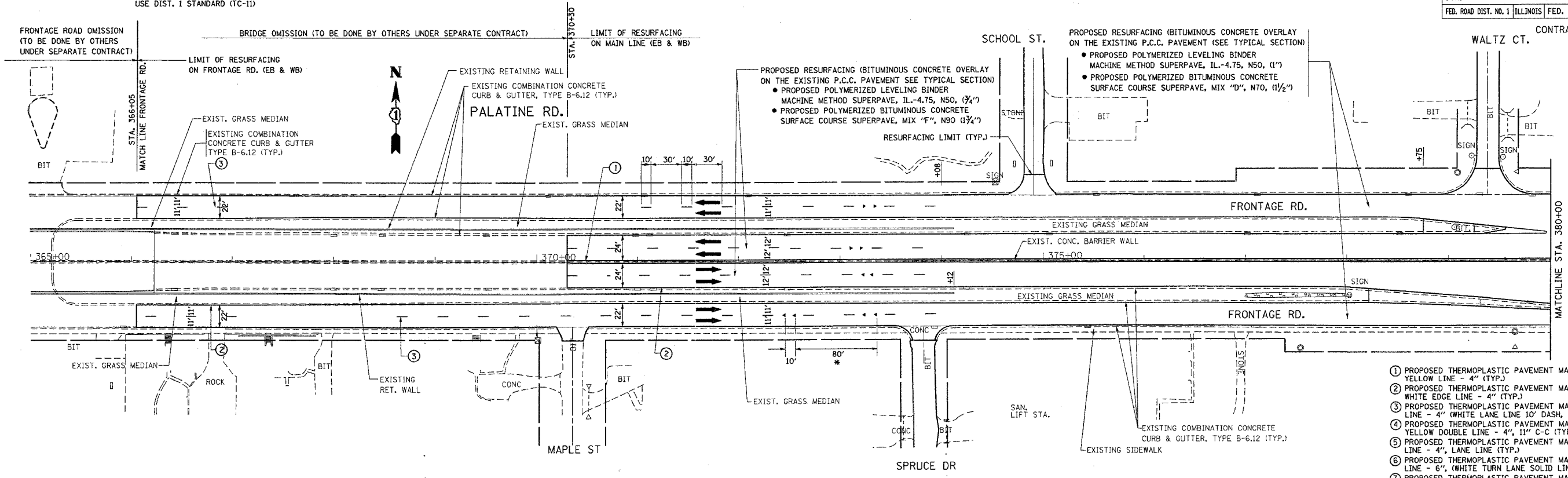


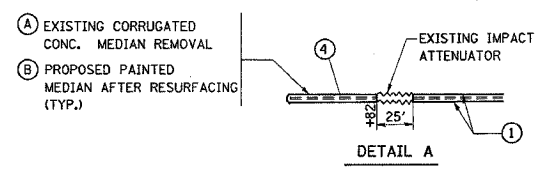
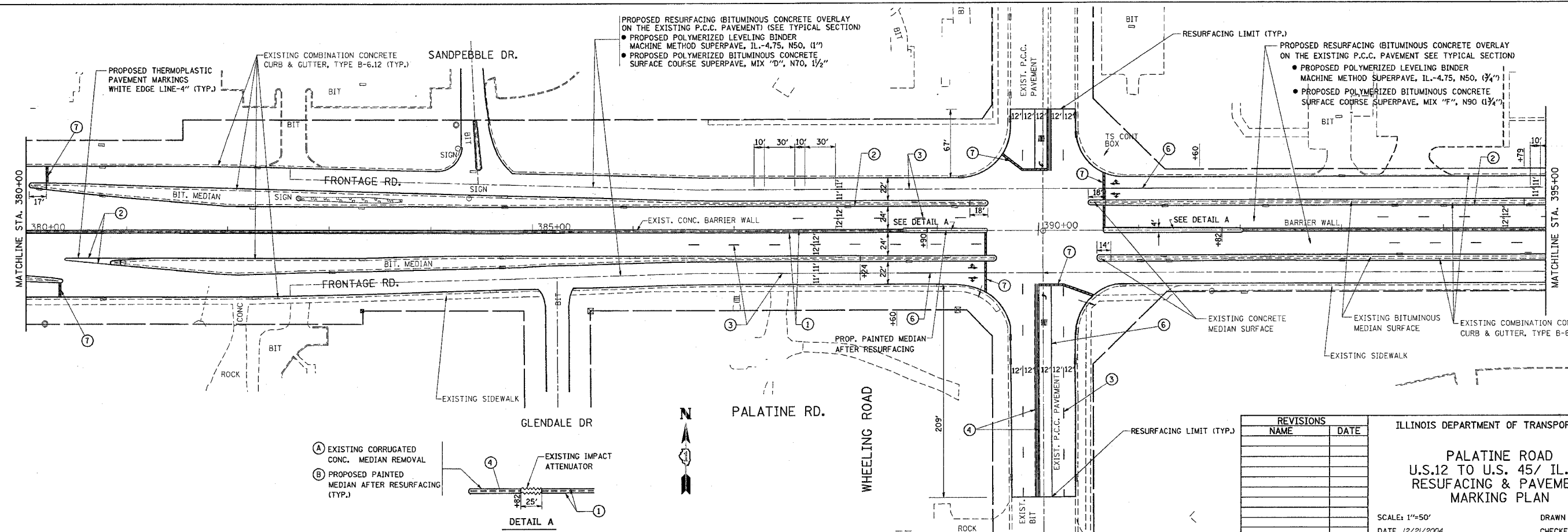
F.A. RTE.	SECTION	COUNTY	TOTAL SHEETS	SHEET NO.
305	D913.1 RS-1	COOK	52	19
STA.		TO STA.		
FED. ROAD DIST. NO. 1 ILLINOIS FED. AID PROJECT				

CONTRACT NO. 62850

* FOR REFLECTIVE PAVEMENT MARKERS AND PAVEMENT MARKING USE DIST. 1 STANDARD (TC-11)



- ① PROPOSED THERMOPLASTIC PAVEMENT MARKINGS YELLOW LINE - 4" (TYP.)
- ② PROPOSED THERMOPLASTIC PAVEMENT MARKINGS WHITE EDGE LINE - 4" (TYP.)
- ③ PROPOSED THERMOPLASTIC PAVEMENT MARKINGS LINE - 4" (WHITE LANE LINE 10' DASH, 30' SKIP), TYP.
- ④ PROPOSED THERMOPLASTIC PAVEMENT MARKINGS YELLOW DOUBLE LINE - 4" 11" C-C (TYP.)
- ⑤ PROPOSED THERMOPLASTIC PAVEMENT MARKING LINE - 4", LANE LINE (TYP.)
- ⑥ PROPOSED THERMOPLASTIC PAVEMENT MARKING LINE - 6", (WHITE TURN LANE SOLID LINE) (TYP.)
- ⑦ PROPOSED THERMOPLASTIC PAVEMENT MARKING LINE - 24", (STOP BAR) (TYP.)



- (A) EXISTING CORRUGATED CONC. MEDIAN REMOVAL
- (B) PROPOSED PAINTED MEDIAN AFTER RESURFACING (TYP.)

REVISIONS	
NAME	DATE

ILLINOIS DEPARTMENT OF TRANSPORTATION

**PALATINE ROAD
U.S.12 TO U.S. 45/ IL. 21
RESURFACING & PAVEMENT
MARKING PLAN**

SCALE: 1"=50'
DATE 12/21/2004

DRAWN BY
CHECKED BY