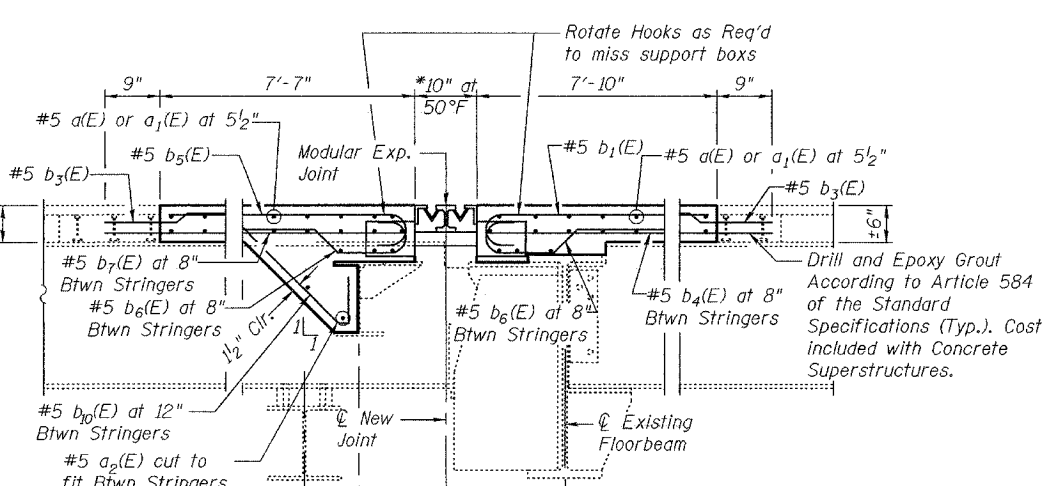
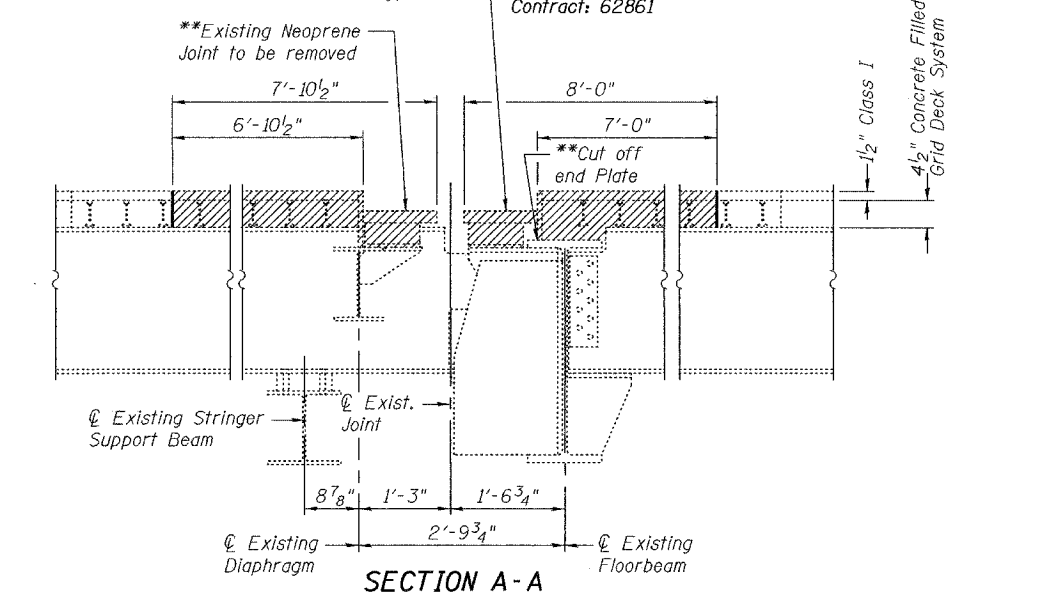
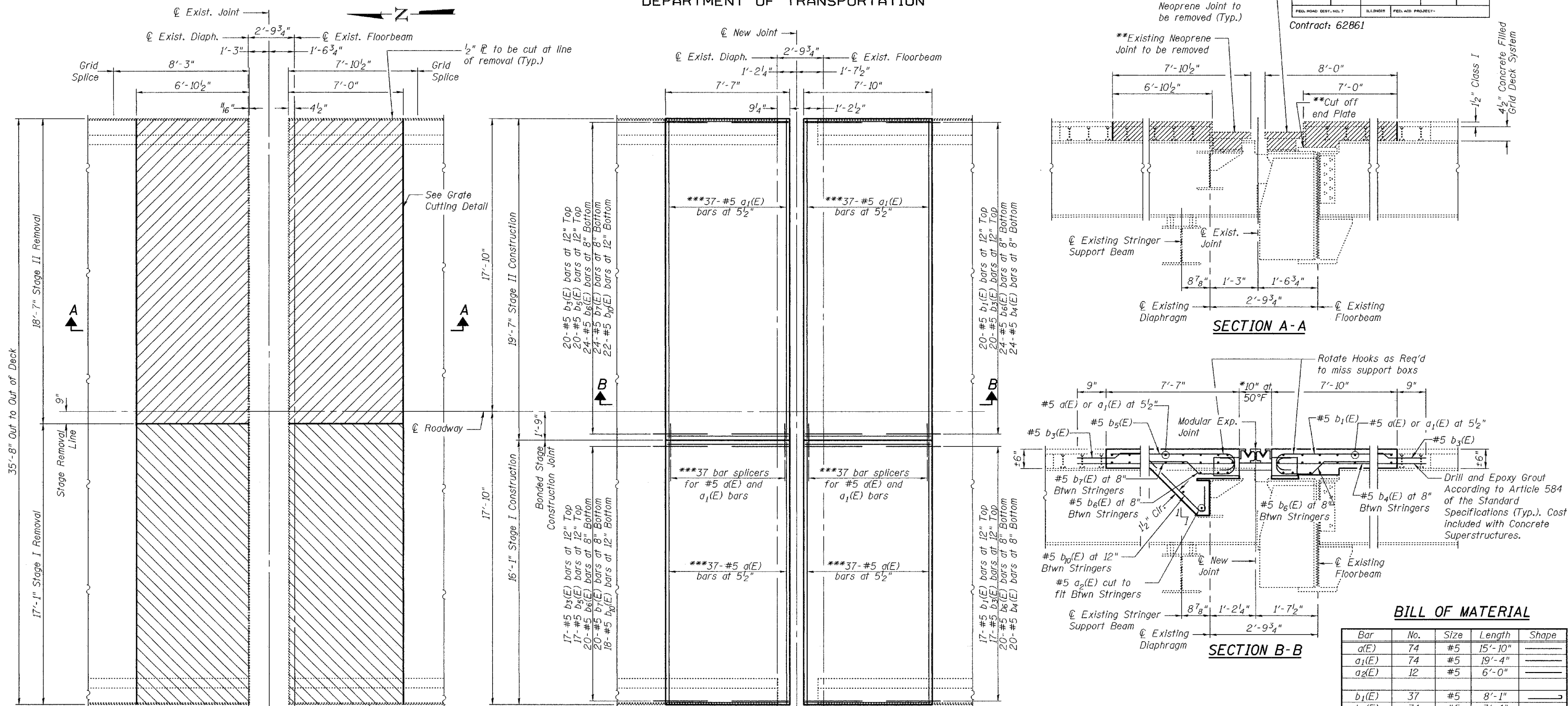


Hatched areas indicate concrete sections to be removed and replaced. Perimeters of concrete removal areas shall be saw cut 3/4" prior to the removal of concrete.

STATE OF ILLINOIS  
DEPARTMENT OF TRANSPORTATION

ROUTE NO.	SECTION	COUNTY	TOTAL SHEETS	SHEET NO.	SHEET NO. 5
		Will	16	9	11 SHEETS
FED. ROAD DIST. NO. 7		ILLINOIS	FED. AID PROJECT		

Contract: 62861

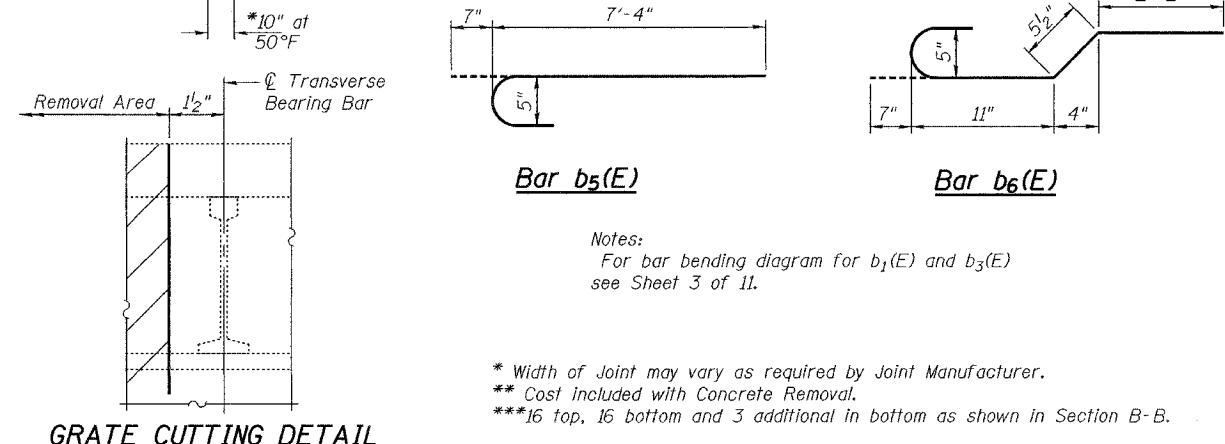
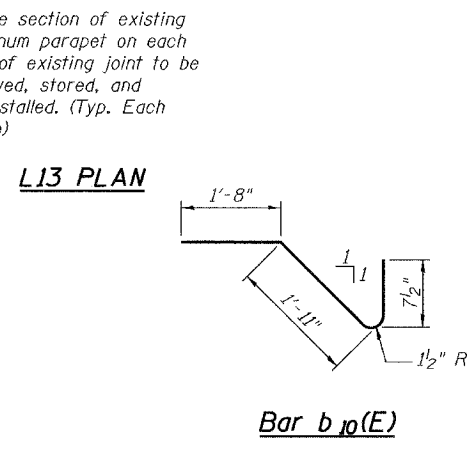


**BILL OF MATERIAL**

Bar	No.	Size	Length	Shape
a1(E)	74	#5	15'-10"	—
a2(E)	74	#5	19'-4"	—
a2(E)	12	#5	6'-0"	—
b1(E)	37	#5	8'-1"	—
b3(E)	74	#5	3'-4"	—
b4(E)	44	#5	8'-4"	—
b5(E)	37	#5	7'-11"	—
b6(E)	88	#5	4'-2"	—
b7(E)	44	#5	8'-2"	—
b10(E)	40	#5	4'-4"	—
Concrete Removal			Cu. Yd.	10.1
Concrete Superstructure			Cu. Yd.	12.1
Reinforcement Bars, Epoxy Coated			Pound	4980
Modular Expansion Joint 6"			Foot	36

Reinforcement bars designated (E) shall be epoxy coated.

**L13 DETAILS**  
**F.A.I. RT.55**  
**WILL COUNTY**  
**SN 099-008**



Notes:  
For bar bending diagram for b1(E) and b3(E) see Sheet 3 of 11.  
\* Width of Joint may vary as required by Joint Manufacturer.  
\*\* Cost Included with Concrete Removal.  
\*\*\* 16 top, 16 bottom and 3 additional in bottom as shown in Section B-B.

DESIGNED	J.S.B.
CHECKED	A.T.H.
DRAWN	Drew Christopher
CHECKED	J.S.B. A.T.H.

January 24, 2005  
EXAMINED *John A. Morris*  
ENGINEER OF STRUCTURAL SERVICES  
PASSED *Ralph E. Anderson*  
ENGINEER OF BRIDGES AND STRUCTURES